

**STANDARD SITE PLAN NOTES**

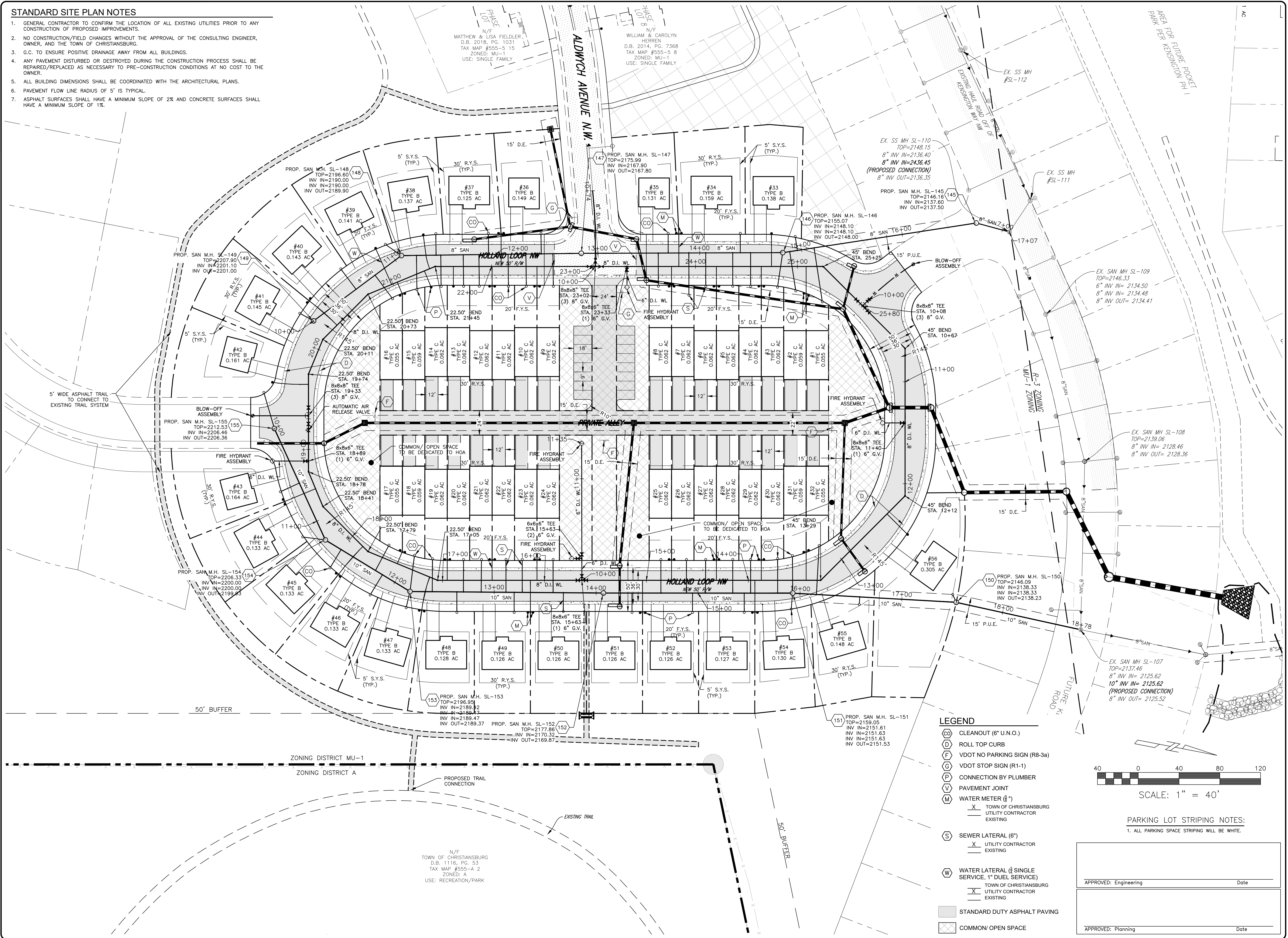
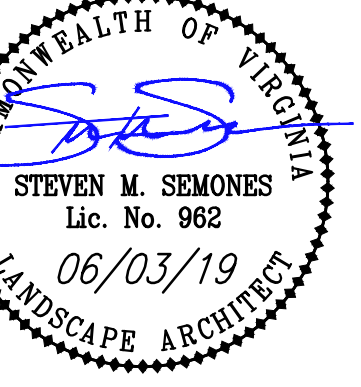
- GENERAL CONTRACTOR TO CONFIRM THE LOCATION OF ALL EXISTING UTILITIES PRIOR TO ANY CONSTRUCTION/PROPOSED IMPROVEMENTS.
- NO CONSTRUCTION/FIELD CHANGES WITHOUT THE APPROVAL OF THE CONSULTING ENGINEER, OWNER, AND THE TOWN OF CHRISTIANSBURG.
- G.C. TO ENSURE POSITIVE DRAINAGE AWAY FROM ALL BUILDINGS.
- ANY PAVEMENT DISTURBED OR DESTROYED DURING THE CONSTRUCTION PROCESS SHALL BE REPAIRED/REPLACED AS NECESSARY TO PRE-CONSTRUCTION CONDITIONS AT NO COST TO THE OWNER.
- ALL BUILDING DIMENSIONS SHALL BE COORDINATED WITH THE ARCHITECTURAL PLANS.
- PAVEMENT FLOW LINE RADIUS OF 5' IS TYPICAL.
- ASPHALT SURFACES SHALL HAVE A MINIMUM SLOPE OF 2% AND CONCRETE SURFACES SHALL HAVE A MINIMUM SLOPE OF 1%.



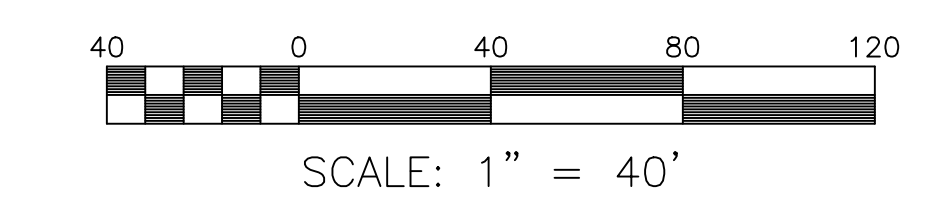
**BALZER & ASSOCIATES**  
PLANNERS / ARCHITECTS  
ENGINEERS / SURVEYORS

Roanoke / Richmond  
New River Valley / Staunton  
Harrisonburg / Lynchburg  
[www.balzer.cc](http://www.balzer.cc)

448 Peppers Ferry Road, NW  
Christiansburg, VA 24073  
540.381.4290



- LEGEND**
- (CO) CLEANOUT (6" U.N.O.)
  - (C) ROLL TOP CURB
  - (F) VDOT NO PARKING SIGN (R8-3a)
  - (G) VDOT STOP SIGN (R1-1)
  - (P) CONNECTION BY PLUMBER
  - (V) PAVEMENT JOINT
  - (M) WATER METER (1")
  - (S) SEWER LATERAL (6")
  - (W) WATER LATERAL (1/2" SINGLE SERVICE, 1" DUEL SERVICE)
  - (X) STANDARD DUTY ASPHALT PAVING
  - (O) COMMON/ OPEN SPACE



**PARKING LOT STRIPING NOTES:**  
1. ALL PARKING SPACE STRIPING WILL BE WHITE.

APPROVED: Engineering \_\_\_\_\_ Date \_\_\_\_\_

APPROVED: Planning \_\_\_\_\_ Date \_\_\_\_\_

**KENSINGTON PHASE X**  
HOLLAND LOOP NW  
LAYOUT & UTILITY PLAN

DRAWN BY: MRM  
DESIGNED BY: MRM  
CHECKED BY: SMS  
DATE: 03/01/2019  
SCALE: 1" = 40'  
REVISIONS:  
SUB #2 06/03/2019