

ADJOINING PROPERTIES:

- A TAX PARCEL 530-(6)-14
P.I.D. #014385
STEVEN M. & REBEKAH M. WRT
INST. 2016002839; P.B. 9 PG. 98;
PLAT IN D.B. 435 PG. 600
USE: RESIDENTIAL
- B TAX PARCEL 530-(A)-9
P.I.D. #027695
STEVEN M. & REBEKAH M. WRT
INST. 2016002839; P.B. 9 PG. 98;
PLAT IN D.B. 590 PG. 545
USE: RESIDENTIAL
- C TAX PARCEL 530-(7)-3
P.I.D. #024289
HOWELL PROPERTIES, L.L.C.
INST. 2014003713 (TRACT IV);
PLAT IN D.B. 790 PG. 741
USE: RESIDENTIAL
- D TAX PARCEL 530-(7)-2
P.I.D. #024288
FREDERICK W. & JOYCE H. BRUSSEAU
D.B. 475 PG. 841; P.B. 10 PG. 163
USE: RESIDENTIAL
- E TAX PARCEL 530-(7)-1
P.I.D. #024287
CARLUS B. & YEVONNE SUSAN BAKER
D.B. 976 PG. 351; P.B. 10 PG. 163
USE: RESIDENTIAL

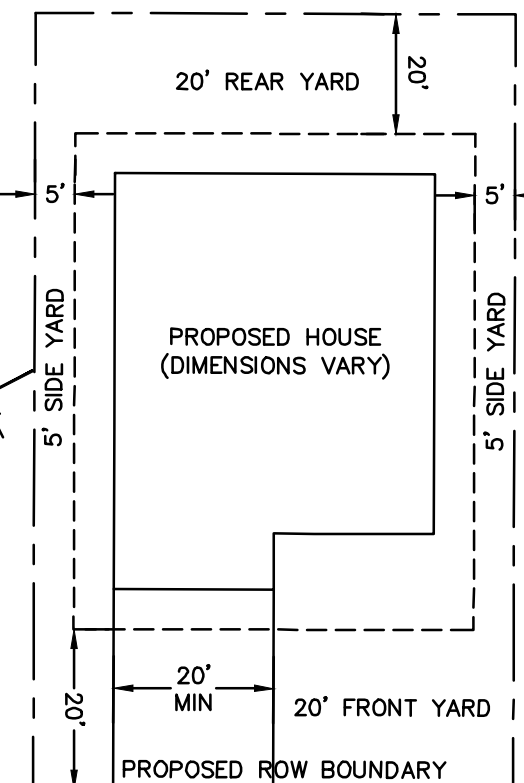
NOTE: STORM STRUCTURES
NORTH OF THE SOUND WALL
AND/OR GUARD RAIL ARE
APPROX. AND N.F.V.

TAX PARCEL 530-(3)-2A
P.I.D. #020093
MICHAEL FOSTER & ELIZABETH F. STANZIALE
WILL IN INST. 2010000020; PLAT IN D.B. 114
PG. 420; D.B. 738 PG. 63; D.B. 815 PG. 69;
D.B. 971 PG. 291, HWY. P.B. 10 PG.
308-322; PLAT IN D.B. 469 PG. 591
USE: VACANT

TAX PARCEL 94-(5)-1 & 2
P.I.D. #020094
MICHAEL FOSTER & ELIZABETH F. STANZIALE
WILL IN INST. 2010000020; PLAT IN D.B. 114
PG. 420; D.B. 738 PG. 63; D.B. 815 PG. 69;
D.B. 971 PG. 291, HWY. P.B. 10 PG.
308-322; PLAT IN D.B. 469 PG. 591

TAX PARCEL
530-(A)-10
PID #021195
TONY R. HARRIS
INST. 2010009342;
INST. 2006011625
W/ PLAT
USE: VACANT

TAX PARCEL
530-(2)-87C
P.I.D. #090329
COMMONWEALTH
OF VIRGINIA
STORM WATER
MANAGEMENT BASIN #5
HWY. P.B. 12 PG. 98-99



The drawing, design, and digital files relating to this project are the property of Gay and Neel, Inc. The reproduction, copying, or other use of this drawing without GNI's written consent is prohibited.

25 GAY AND NEEL, INC.
ENGINEERING • LAND PLANNING • SURVEYING

1260 Radford Street
Christiansburg, Virginia 24073

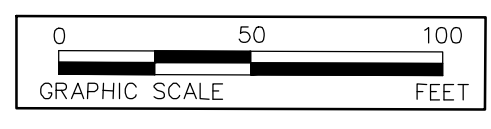
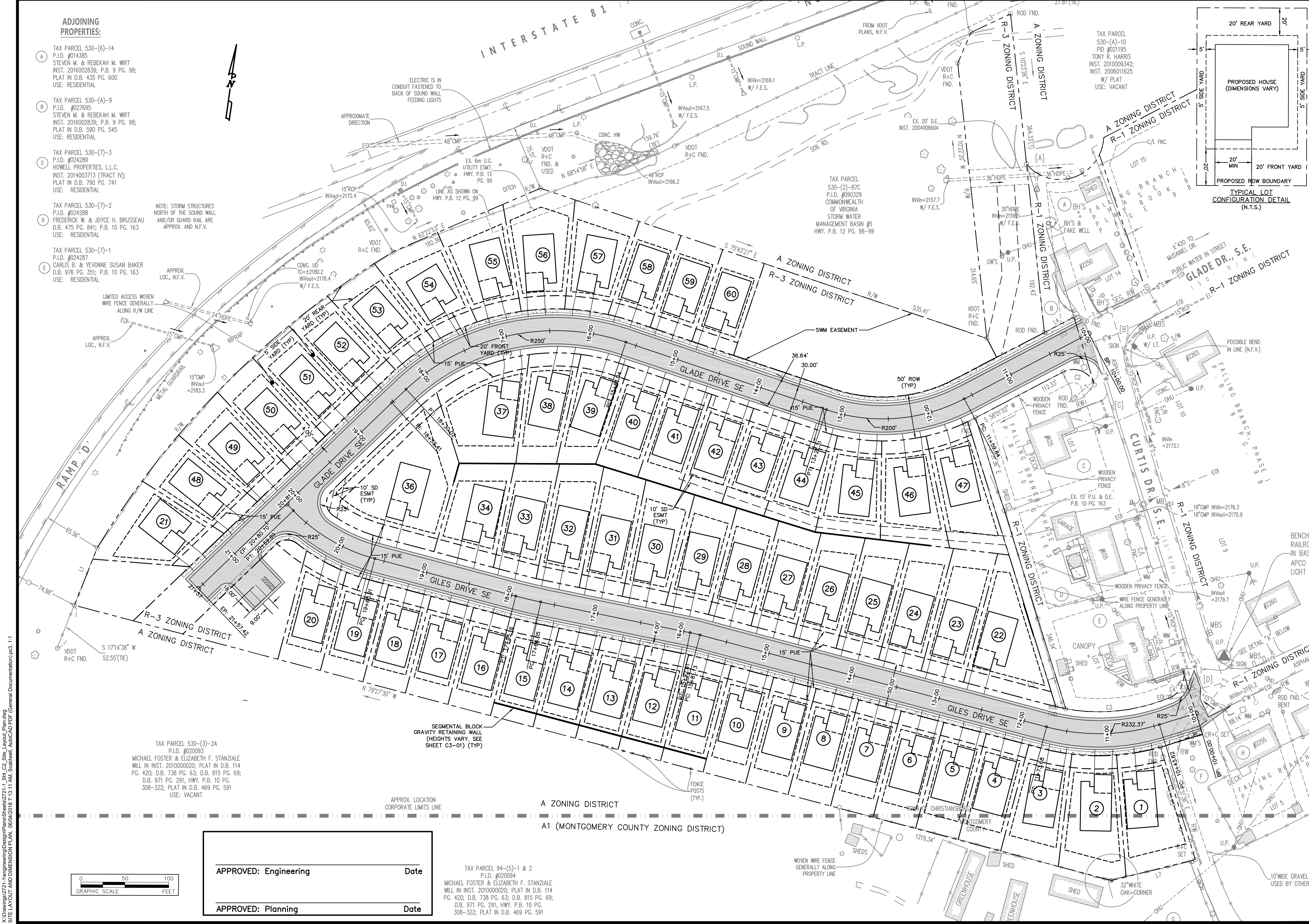
Phone: (540) 381-6011
Fax: (540) 381-2773
Email: info@gayandneel.com
Web: www.gayandneel.com

REAGAN'S POINTE SUBDIVISION

COMMONWEALTH OF VIRGINIA
JOHN T. NEEL
Lic. No. 035780
06/04/18
PROFESSIONAL ENGINEER

REVISIONS		
NO.	COMMENTS	DATE

PROJECT TEAM	
PIE	JOHN NEEL, PE
PW	JOSH MACDONALD, PE
DESIGN	JMM, LHS, STB, EMQ
ISSUE DATE	
05/01/2018	
GNI JOB NO.	
2721.1	
SHEET TITLE	
SITE LAYOUT AND DIMENSION PLAN	
SHEET NUMBER	
C2-01	



APPROVED: Engineering Date
APPROVED: Planning Date

X:\Drawings\2721-1\Engineering\Design\Plans\2721-1_Sht_C2_Site_Layout_Plan.dwg SITE LAYOUT AND DIMENSION PLAN, 16/04/2018 7:15:11 AM, S:\david, AutoCAD PDF (General Documentation).pc3, 1:1