

# Proposed Christiansburg Park

TOWN COUNCIL WORK SESSION PRESENTATION

TOWN OF CHRISTIANSBURG, VIRGINIA

NOVEMBER 18, 2019

**FAULCONER**  
CONSTRUCTION COMPANY



# Introduction

**FAULCONER**  
CONSTRUCTION COMPANY



# SCHEDULE

PROPOSED CHRISTIANSBURG PARK







# Master Plan Update

November 18, 2019



- Public Access
- Vegetated Buffer Around Park
- Parking
- Drop-off
- Concessions & Restrooms
- Parking
- Amphitheatre with Multipurpose Pavilion
- Parking
- Bus Parking

- Stormwater Management Basin
- Small Picnic Pavilion
- Iconic Hilltop Pavilion with Yoga Gardens
- Bus Parking
- All Inclusive Destination Playground with Spray Pad
- Parking
- Central Pavilion
- Tennis / Pickleball Courts
- Small Picnic Pavilion
- Sand Volleyball Courts
- Large and Small Dog Park
- Maintenance & Support Bldg

## Proposed Christiansburg Park

0 50 100 200 300 400

SCALE IN FEET

1" = 100'

September 5, 2019





# Master Plan Update

All Inclusive Playground

## NATIONAL DEMONSTRATION SITE

- ▶ There are currently 3 NDS Sites in Virginia.
- ▶ NDS helps promote the community's dedication to providing Research Based Playgrounds.
- ▶ NDS Inclusion
- ▶ NDS Fitness

**All Inclusive  
Playground**





# Proposed Christiansburg Park Inclusive Components

Design • Build • PLAY!

- 1 Merry Go All
- 2 Sensory Rock N Raft
- 3 Sensory Ramp
- 4 Sensory Wave Climber
- 5 Poured in Place Surfacing
- 6 ADA Adaptive Switch Capable Components
- 7 Musical Instruments
- 8 Arch Swing
- 9 6-Position Swing
- 10 Sensory Cove
- 11 Roller Slide
- 12 Expression Swings
- 13 Ground Level Gadgets
- 14 Crows Nest Panels
- 15 Benches with Shade



**All Inclusive  
Playground**

## Sensory Wave ADA Accessible Ramp

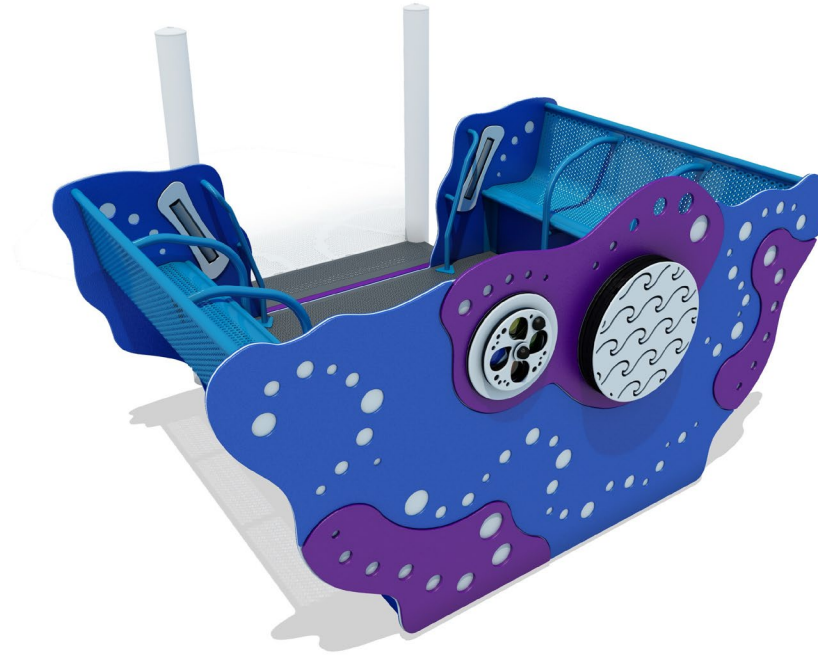
- ▶ ADA Ramp with built in two sided play panels.
- ▶ Designed for interactive play experience from both the ramp and the ground.
- ▶ Auditory, Visual, Cognitive, Social, Tactile, and Physical Sensory Play Events
- ▶ Even the Access to the Playground Structure has Accessible Play Value



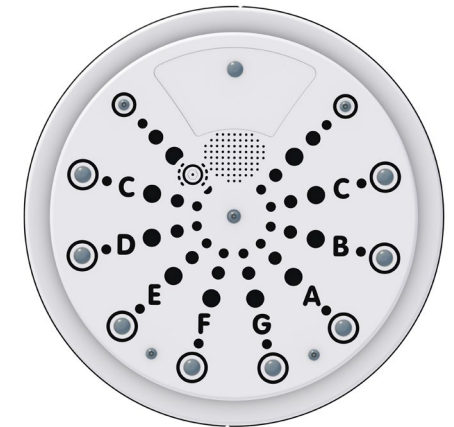
**All Inclusive  
Playground**

# Sensory Wave Rock-N-Raft

- ▶ Designed for up to 6 passengers including those in mobility devices
- ▶ Built in Sensory Panels for Inclusive Play
- ▶ ADA Adaptive Switch Capable Panels
- ▶ Two Sided Color Panel for Cooperative Play
- ▶ Great Social, Communicative, Gathering Place for users of all ages and abilities.



**All Inclusive  
Playground**



# Sensory Wave Up & On Climber

- ▶ Inclusive ADA Accessible climbing feature.
- ▶ Transfer Platform Height Entrance and Built in hand and foot holds for easy access, even from a Mobility Device
- ▶ Forward Facing Access to the play elements
- ▶ Cognitive, Auditory and Tactile Play Elements



**All Inclusive  
Playground**

# ARCH SWING

Wide seating area  
accommodates up to 5  
children

Children with Sensory  
Processing Disorder can lay  
across the Center Section  
and enjoy the calming motion

Great for Children with Autism

Perfect gather place for all  
ages to interact and play  
together



**All Inclusive  
Playground**

# Free-Notes Harmony Musical Instruments

- ▶ Cantata Chimes,. 11 Resonated Aluminum Tubes, that are Precision Tuned to a Pentatonic (5 Note) Scale
- ▶ Melody Chimes. 23 Resonated Flat Aluminum Bars produce rich, soothing tones. Tuned to Pentatonic Scale. User cannot hit a bad note. Will not upset users on the Autistic Spectrum
- ▶ ADA Adaptive Mallet. Designed after ADA Accessible Forks and Spoons
- ▶ Concert Trio Drums. Magnifies a deep-reach, bass sound.



**All Inclusive  
Playground**

## ROLLER SLIDE

- ▶ Designed for Children of all abilities
- ▶ Provides distinctive developmental and play benefits like enhanced balance and coordination
- ▶ Provides a calming sensory experience for children with Sensory Processing Issues
- ▶ Constructed entirely of Steel and Aluminum, it is an ideal option for children with cochlear implants



**All Inclusive  
Playground**

## SPLASH PAD

- ▶ Approximately 1 500 sf
- ▶ All inclusive use

**Example:  
Prairie Township, OH Sprayground**



**Splash Pad**



## The Dog Park

- ▶ Small and Large Dog Areas
- ▶ Sally Port Entrance
- ▶ Water Spigots
- ▶ Climbing Rocks
- ▶ **Artificial Turf with Concrete Border**
- ▶ Crushed Stone Boundary
- ▶ Shade Structure
- ▶ Ornamental and Chain Link Fencing
- ▶ Shade Trees on South Side

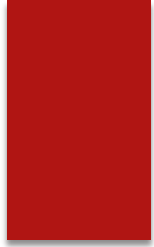
### Artificial Turf Areas

Small dog park – 11,920 s.f

Large dog park – 22,574 s.f.

1 Acre of Total Fenced Area





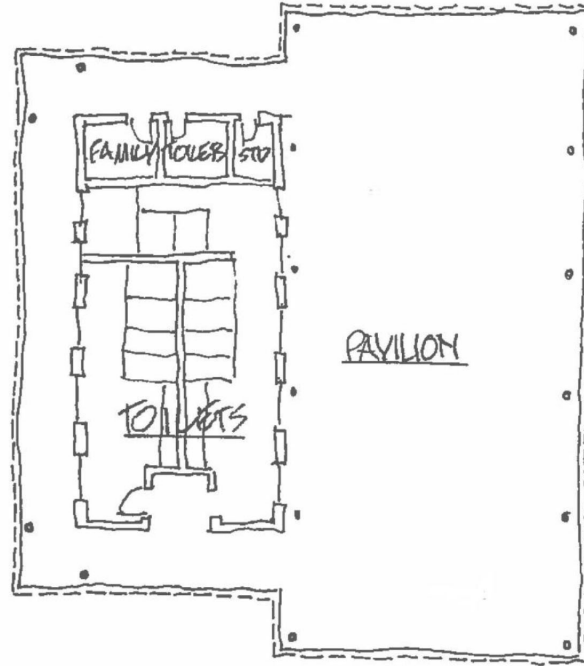
# Pavilions

## Multi Purpose Pavilion

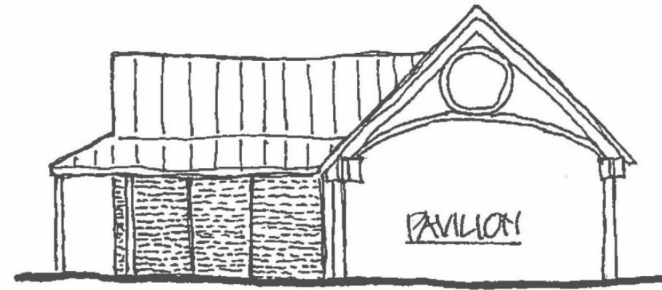


PLAN 1/16"=1'-0"

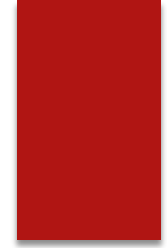




PLAN  $\frac{1}{16}'' = 1'-0''$

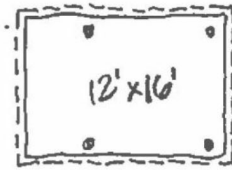


ELEVATION  $\frac{1}{16}'' = 1'-0''$

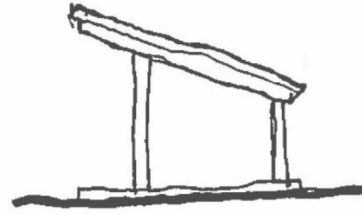


## Pavilions

Play Area  
Pavilion

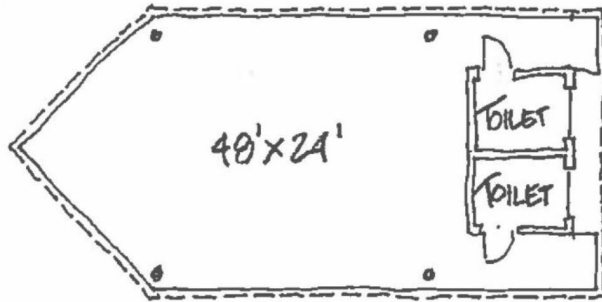


PLAN 1/16" = 1'-0"



ELEVATION

SMALL



PLAN 1/16" = 1'-0"

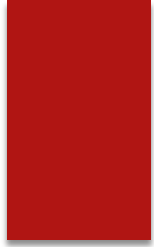


ELEVATION

LARGE

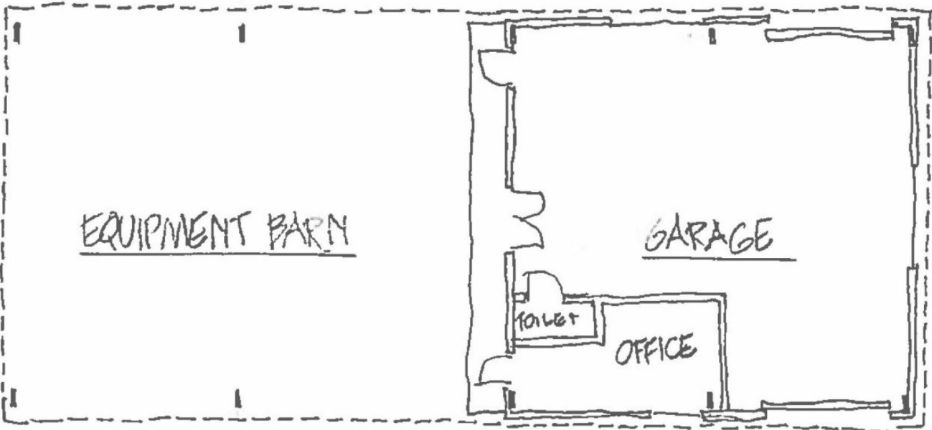
## Pavilions

Picnic Pavilion

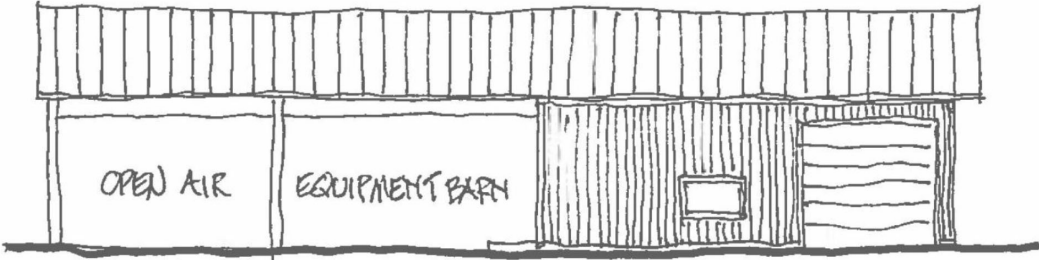


**Pavilions**

**Maintenance Building**

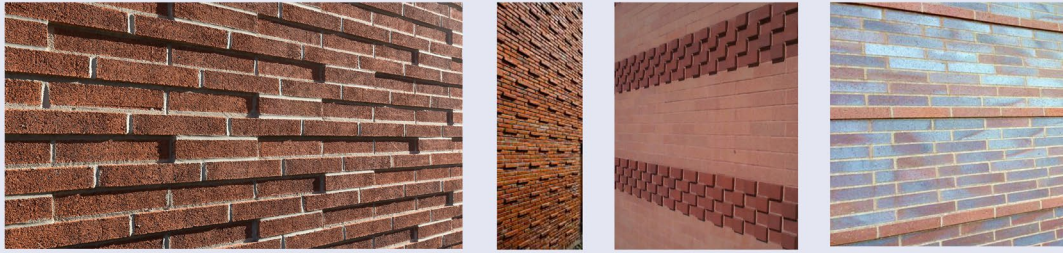


PLAN 1/16"=1'-0"

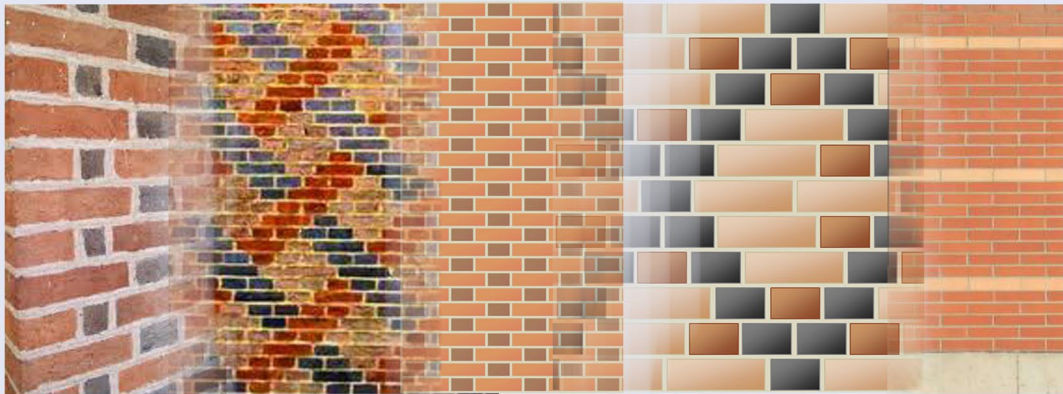


ELEVATION 1/16"=1'-0"

# Building Brick Palettes



**promising reveals and textures**



flemish bond

decorative pntls

running bond with contrasting accent of horizontal

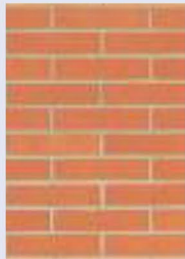
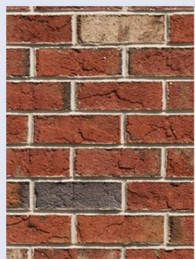
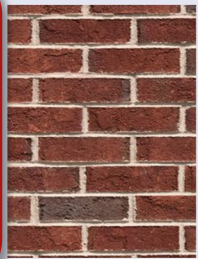
## BRICK CONSIDERATIONS

PATTERNS SCALE WALLS DOWN WHERE WINDOWS ARE ABSENT

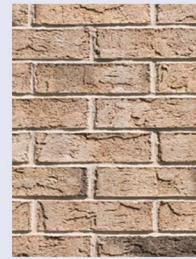
TEXTURES, ACCENTS AND BONDS EMPHASIZE HORIZONTAL AND FACADE VERSUS STRUCTURE

BRICK IS LOW MAINTENANCE

BRICK IS A TRADITIONAL CHRISTIANSBURG WALL MATERIAL AND CHARACTERIZES MANY NOTABLE BUILDINGS IN TOWN



traditional virginia hues



contemporary hues

## Proposed Christiansburg Park

## Turf Surface

### Standard Fill

- ▶ Lacrosse
- ▶ Softball
- ▶ Soccer
- ▶ Football



## Multi-purpose Fields



# PROPOSED SPORTS COMPLEX STUDY

## ▶ November 4, 2019 – Site Visit/Kick-Off

- Location Tour
- Meetings with Staff
- Presentation to Commission/Committee

## ▶ Market & Demand Analysis

- Sports Market Research
- Facility Recommendations & Usage Estimates

## ▶ Sports Opportunity Assessment

- Pro Forma
- Strategic Plan
- Impact Estimates
- Funding Analysis



DATA DRIVEN  
MARKET  
ANALYSIS  
& DEMAND  
PLANNING



COMMUNITY  
ENGAGEMENT  
& CUSTOMIZED  
MARKET  
RESEARCH



QUANTIFIED  
VISITOR  
IMPACTS  
& FINANCIAL  
FEASIBILITY



Study Tasks	Month:									
	November			December				January		
Week Ending:	8	15	22	29	6	13	20	27	3	10
Site Visit & Kickoff Meetings in Christiansburg	GREEN									
Demographic & Socioeconomic Analysis		GRAY								
Regional Sports Facility Inventory & Analysis		GRAY	GRAY	GRAY	GRAY					
Sports User Group & Tournament Interviews		GRAY	GRAY	GRAY	GRAY					
SWOT Analysis					GRAY					
Usage Estimates & Operating Pro Forma						GRAY	GRAY			
Visitor Impact Projections							GRAY	GRAY		
Long-Term Funding Analysis								GRAY		
Operating & Marketing Recommendations									GRAY	
Presentation of Findings in Christiansburg										GREEN

Note: GREEN boxes represent Victus Advisors trips to Christiansburg





- Public Access
- Vegetated Buffer Around Park
- Parking
- Drop-off
- Concessions & Restrooms
- Parking
- Phase 1 Stage Pad

- Stormwater Management Basin
- Large Picnic Pavilion
- Small Picnic Pavilion
- Iconic Hilltop Pavilion with Yoga Gardens
- Bus Parking
- All Inclusive Destination Playground with Splash Pad
- Parking
- Phase 1 Bathrooms
- Small Picnic Pavilion
- Large and Small Dog Park
- Maintenance & Support Bldg

## Master Plan Update

November 18, 2019

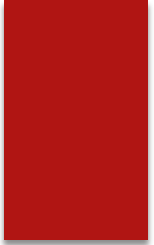
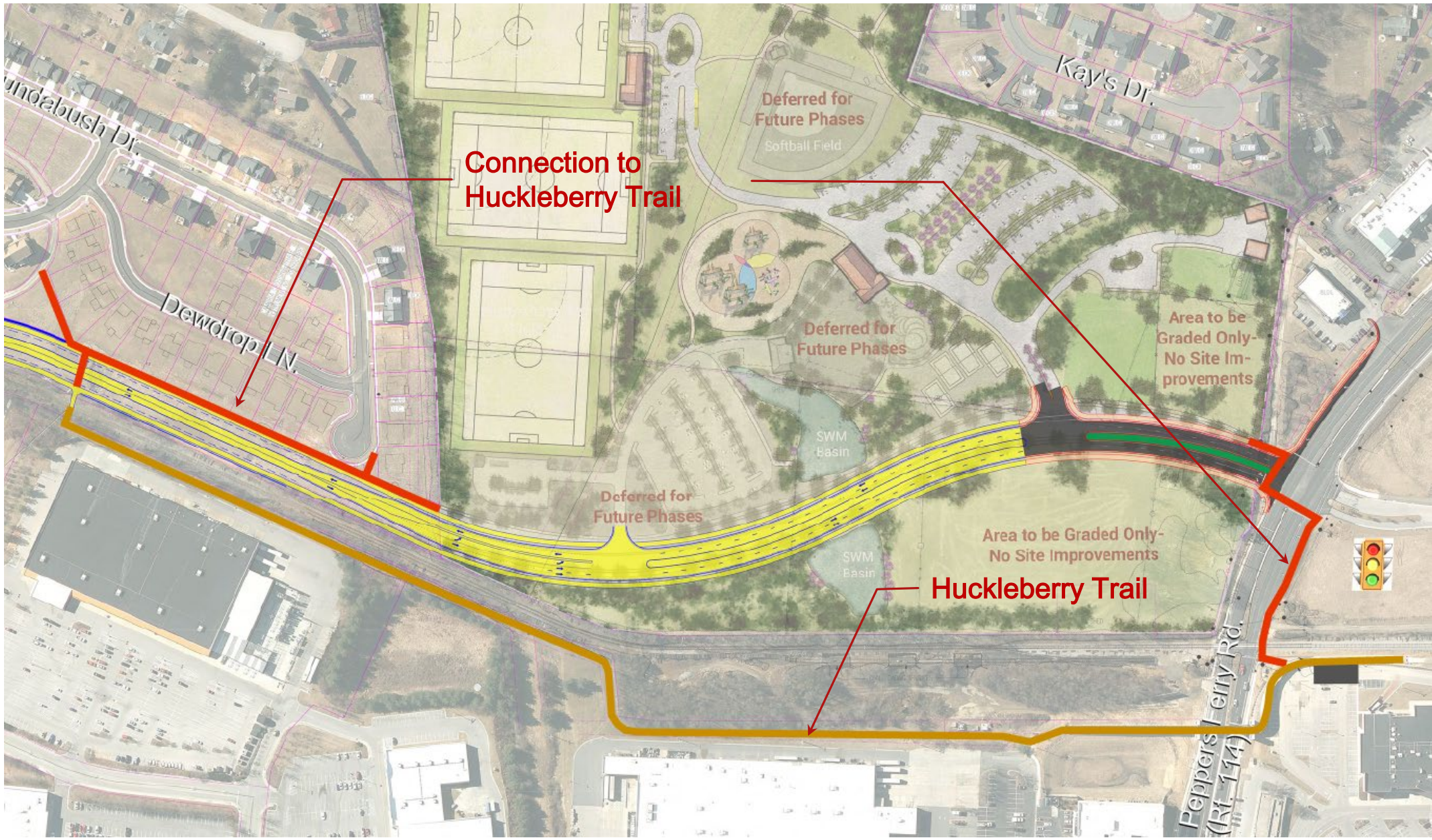
## Deferred Plan

# Proposed Christiansburg Park



SCALE IN FEET  
 0 50 100 200 300 400  
 1" = 100'  
 September 5, 2019





**Connector Road**

**Huckleberry Trail Connection**

**Connection to Huckleberry Trail**

Deferred for Future Phases  
Softball Field

Deferred for Future Phases

Area to be Graded Only - No Site Improvements

Deferred for Future Phases

Area to be Graded Only - No Site Improvements

**Huckleberry Trail**

Dundabush Dr.

Dewdrop Ln.

Kay's Dr.

Peppers Ferry Rd.  
(Rt. 114)



- Public Access
- Vegetated Buffer Around Park
- Parking
- Drop-off
- Concessions & Restrooms
- Parking
- Amphitheatre with Multipurpose Pavilion
- Parking
- Bus Parking

- Stormwater Management Basin
- Small Picnic Pavilion
- Iconic Hilltop Pavilion with Yoga Gardens
- Bus Parking
- All Inclusive Destination Playground with Spray Pad
- Parking
- Central Pavilion
- Tennis / Pickleball Courts
- Small Picnic Pavilion
- Sand Volleyball Courts
- Large and Small Dog Park
- Maintenance & Support Bldg

# Master Plan Update

November 18, 2019

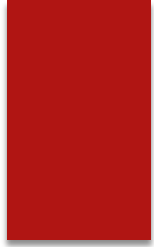
## Questions and Comments

### Proposed Christiansburg Park



0 50 100 200 300 400  
 SCALE IN FEET  
 1" = 100'  
 September 5, 2019







# Proposed Christiansburg Park

0 50 100 200 300 400

SCALE IN FEET

1" = 100'

September 5, 2019



## Master Plan Update

November 4, 2019

## Deferred Plan

### Parking

Original (Faulconer) overall master plan parking space count = 479  
17 lost to dog park changes

New overall permanent parking space count = 462

Phase I permanent spaces = 272

Phase I Potential Temporary Overflow Spaces = 110

Phase II permanent spaces = 190