

TAX PARCEL 530-2-84A
D.B. 1099, PG. 489
ZONING: B-3, GENERAL
BUSINESS
USE: RESIDENTIAL

TAX PARCEL 529-(2)-84A
N/F TRUMAN ANNEX, LLC
INST. 2016002270 W/ PLAT
USE: VACANT

TAX PARCEL 529-(2)-83B
N/F SANDRA BANE
INST. 2019002445
USE: RESIDENTIAL

TAX PARCEL 529-(2)-83C
N/F TRUMAN ANNEX, LLC
PARCEL 4
INST. 2016002269;
PLAT IN INST. 2002009093

TAX PARCEL 529-(2)-84A
N/F TRUMAN ANNEX, LLC
INST. 2016002270 W/ PLAT
USE: VACANT

TAX PARCEL
529-(2)-83A, 82E
N/F TRUMAN ANNEX, LLC
PARCEL 2
INST. 2016002269;
PLAT IN INST. 2002009093

N/F
VADA E. DICKERSON,
LIFE ESTATE
TAX PARCEL 529-(2)-82
D.B. 1134 PG. 410
ZONING: B-3, GENERAL
BUSINESS
USE: RESIDENTIAL

SEE INSET BELOW
FOR CONTINUATION

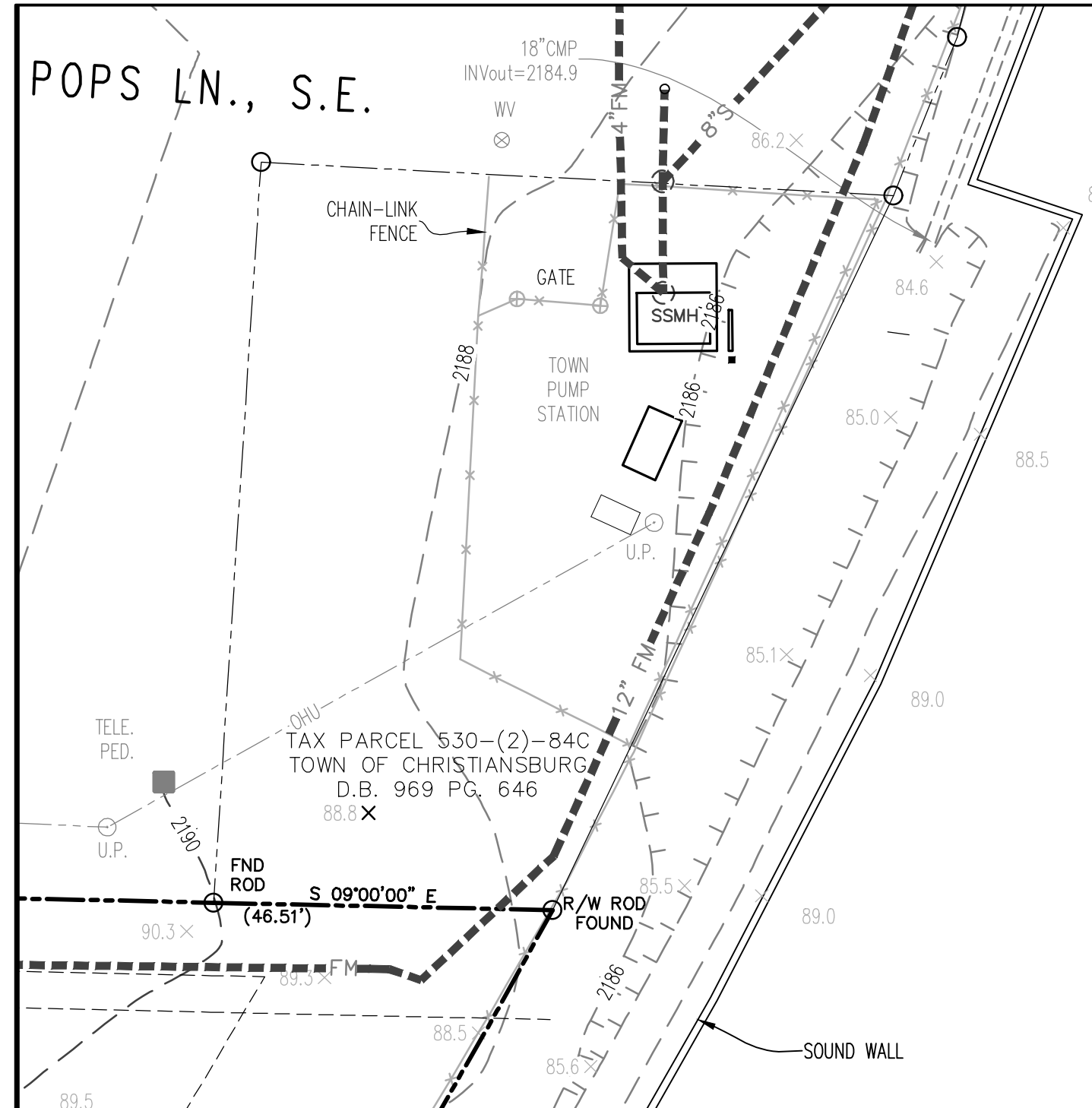
FAIRVIEW STREET, S.E.

POPS LN., S.E.

INTERSTATE 1-81 EXIT RAMP



APPROVED: Engineering _____ Date _____
APPROVED: Planning _____ Date _____

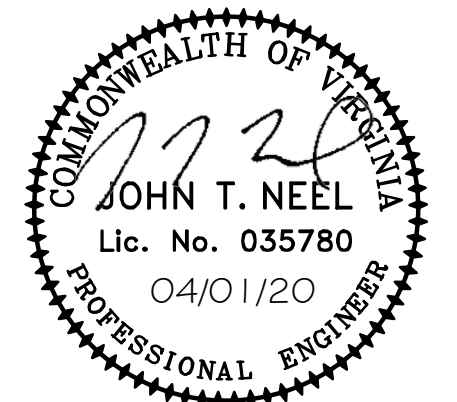


GAY AND NEEL, INC.
ENGINEERING ♦ LAND PLANNING ♦ SURVEYING
1280 Radford Street
Christiansburg, Virginia 24073
Phone: (540) 381-6011
Fax: (540) 381-2773
Email: info@gayandneel.com
Web: www.gayandneel.com

The drawing, design, and digital files relating to this project are the property of Gay and Neel, Inc. The reproduction, copying, or other use of this drawing without GNI's written consent is prohibited.

TIM CONNER MOBILE HOME PARK
2045 FAIRVIEW STREET, S.E.

CHRISTIANSBURG, VIRGINIA



REVISIONS

NO.	COMMENTS	DATE

PROJECT TEAM

PIE	JOHN T. NEEL, PE
PIA	BRYANT H. ALTIZER, PE LS
DESIGN	ELLIOTT S. DELP

ISSUE DATE

04/01/2020

GNIJOB NO.

1822.1

SHEET TITLE

EXISTING CONDITIONS

SHEET NUMBER

C1-01

X:\Drawings\1822-1\ENGINEERING\Design\Plans\1822-1_Sht_C1_Demo_Plan.dwg
DEMOLITION PLAN - 04/01/2020 8:30:44 AM, Edited, DWG TO PDF, Pk1, 1:1