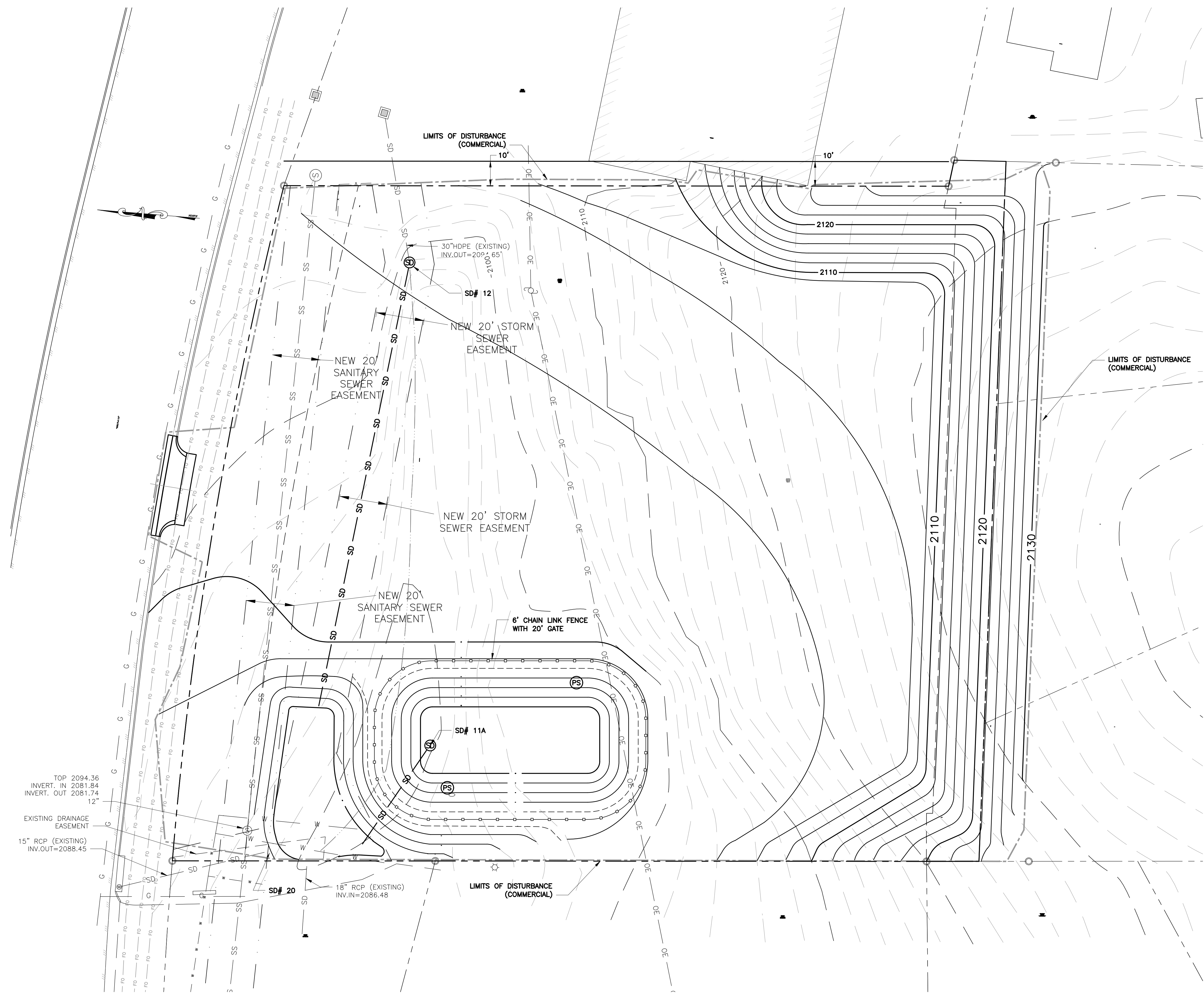


P:\051000\4572A-02-18\_000000.dwg 1145 Roanoke Street Commercial 8/14/2018 10:28:45 AM 10/17/2018 4:57:20 PM



TOP 2094.36  
 INVERT. IN 2081.84  
 INVERT. OUT 2081.74  
 12"

EXISTING DRAINAGE  
 EASEMENT

15" RCP (EXISTING)  
 INV.OUT=2088.45

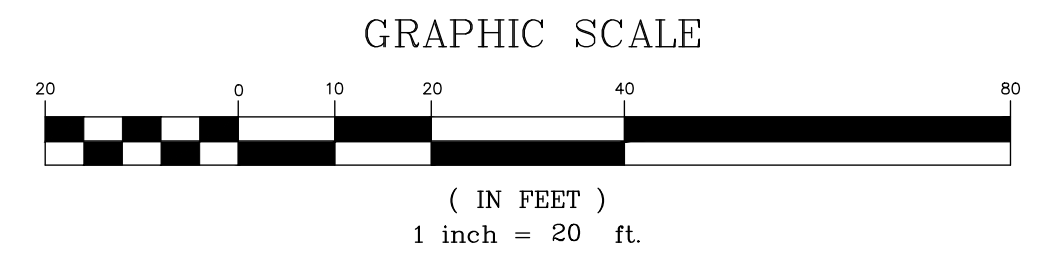
SD# 20  
 18" RCP (EXISTING)  
 INV.IN=2086.48

SD# 11A

SD# 12  
 30" HDPE (EXISTING)  
 INV.OUT=2003.65

**E&S LEGEND**

- (CE) 3.02 CONSTRUCTION ENTRANCE
- (SF) 3.05 SILT FENCE
- (TS) 3.31 TEMPORARY SEEDING
- (PS) 3.32 PERMANENT SEEDING
- (MU) 3.35 MULCHING



APPROVED: Engineering \_\_\_\_\_ Date \_\_\_\_\_

APPROVED: Planning \_\_\_\_\_ Date \_\_\_\_\_

**SHOWCASE HOME BUILDERS  
 COMMERCIAL GRADING PLAN  
 1145 ROANOKE ST.  
 TOWN OF CHRISTIANSBURG, VIRGINIA**

No.	Date	Description	By

**FINAL GRADING & PERMANENT  
 STABILIZATION PLAN**

FOURTH  
 REVIEW  
 ###  
 NOT FOR CONSTRUCTION  
 NOT FOR RECORDING

Drawn By: ###  
 Checked By: DRM  
 Drawing: #####  
 Commission No. 4572A