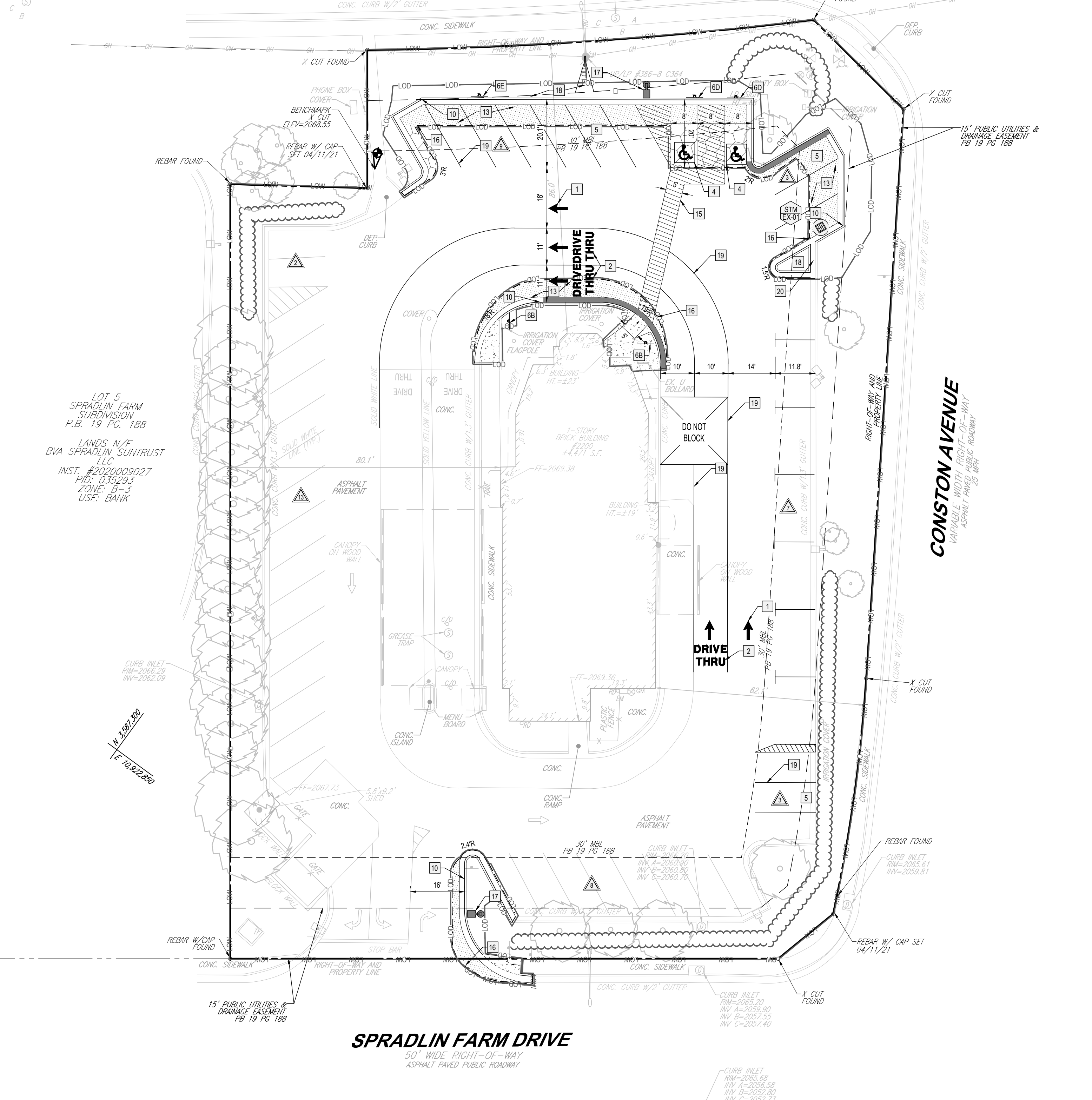


SAN. MH  
 TBM=2068.47  
 INV. A=2068.82  
 INV. B=2066.42  
 INV. C=2058.72

SAN. MH  
 TBM=2068.68  
 INV. A=2068.88  
 INV. B=2066.48  
 INV. C=2058.78

SAN. MH  
 TBM=2070.40  
 INV. A=2071.59  
 INV. B=2069.19  
 INV. C=2061.59  
 INV. D=2053.99  
 INV. E=2063.75



LOT 5  
 SPRADLIN FARM  
 SUBDIVISION  
 P.B. 19 PG. 188

LANDS N/F  
 BY SPRADLIN SUNTRUST  
 LLC  
 INST. #2020009027  
 P.O. 035293  
 ZONE: B-3  
 USE: BANK

**SPRADLIN FARM DRIVE**  
 50' WIDE RIGHT-OF-WAY  
 ASPHALT PAVED PUBLIC ROADWAY

**CONSTON AVENUE**  
 VARIABLE WIDTH PUBLIC ROADWAY  
 ASPHALT PAVED PUBLIC ROADWAY

**SITE PLAN DESIGN NOTES & KEY PLAN**

- 1 DIRECTIONAL GRAPHIC (C-4.0)
- 1A MULTI-LANE MERGE ARROW (C-2.0)
- 2 DRIVE-THRU GRAPHIC (C-3.0)
- NOT USED 3 STOP-LINE GRAPHIC (C-3.0)
- 4 PAINTED HANDICAP PARKING SYMBOL (C-4.0)
- 5 STANDARD PARKING STALL (TYP) (C-4.0)
- 6 DIRECTIONAL SIGNAGE (C-4.0)
- ALL SIGNS MUST CONFORM TO MUTCD LATEST VERSION
- 6A "STOP" SIGN (C-4.0)
- 6B "PEDESTRIAN CROSSING" SIGN (C-4.0)
- 6C "DO NOT ENTER" SIGN (C-4.0)
- 6D HANDICAP SIGN (HC-10 DETAIL)
- 6E CURBSIDE ORDER SIGN (C-4.0)
- NOT USED 7 WHEEL-STOP (C-4.1)
- NOT USED 8 EMPLOYEE RAMP (10% MAX SLOPE) (C-4.7)
- 9 TYPICAL SIDEWALK (C-4.0)
- 10 18" CURB AND GUTTER - CATCHING (C-4.0)
- 10 18" CURB AND GUTTER - SPILLING (C-4.1)
- NOT USED 11 ROLLOVER MOUNTABLE CURB (C-4.1)
- NOT USED 12 BOLLARD (C-4.1)
- 13 TYPICAL ASPHALT PAVEMENT SECTION (C-4.2)
- 14 PAVEMENT EDGE (C-4.2)
- 15 CROSSWALK DETAIL (C-4.3)
- 16 SAWCUT (C-4.3)
- 17 RELOCATED SITE LIGHT (24' TALL) (SEE NOTE 5, THIS SHEET)
- 18 LANDSCAPED AREA (C-4.3)
- 19 4" WIDE WHITE STRIPE (C-4.3)
- 20 2' FLUME (C-4.3)

**SITE PLAN NOTES:**

1. CONTRACTOR TO PROVIDE MINIMUM PAVEMENT SECTION (OR MATCH EXISTING WHICHEVER IS GREATER) AND MATCH EXISTING CROSS-SLOPES IF ASPHALT PATCHING IS REQUIRED. SEE PAVEMENT DETAILS.
2. CONTRACTOR SHALL REFER TO ARCHITECT PLANS FOR THE EXACT DIMENSIONS OF THE BUILDING AND THE LOCATION OF DOORWAYS, UTILITIES, ETC.
3. CONTRACTOR SHALL INSTALL NECESSARY TRAFFIC CONTROL, SAFETY BARRICADES, LIGHTING, AND OTHER REQUIRED CONTROL MEASURES TO SECURE THE WORK AREA FROM EXISTING TRAFFIC AND TO ENSURE PUBLIC SAFETY.
4. CONTRACTOR SHALL INSTALL EXPANSION JOINT BETWEEN ALL CONCRETE PAVEMENT INTERFACE WITH BUILDINGS, CURB & GUTTER, AND OTHER CONSTRAINED OBJECTS.
5. CONTRACTOR TO MATCH EXISTING POLE BASE, DESIGN, AND BOLT PATTERN.

**LEGEND**

EXISTING	CONCRETE CURB & GUTTER	CONCRETE CURB & GUTTER	PROPOSED
	TYP. SIGN	DEPRESSED CURB	
		PROP CONCRETE SIDEWALK	
		PROP CONCRETE	
		PROP ASPHALT (FULL DEPTH SECTION)	
		PROP SAWCUT	
		LIMITS OF WORK	—LOW—LOW—
		LIMIT OF DISTURBANCE	—LOD—LOD—

APPROVED: Engineering \_\_\_\_\_ Date \_\_\_\_\_

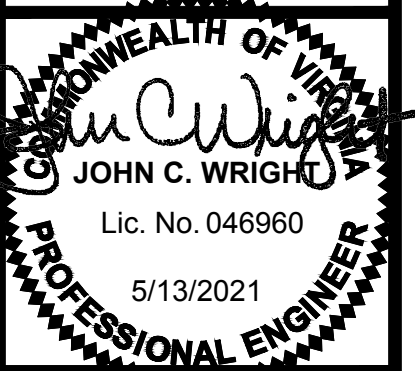
APPROVED: Planning \_\_\_\_\_ Date \_\_\_\_\_



811  
 Know what's below.  
 Call before you dig.  
 ALWAYS CALL 811  
 It's fast. It's free. It's the law.

REVISIONS:

MARK	DATE	BY
△		
△		
△		



**BOHLER**  
 BOHLER & ASSOCIATES, INC.  
 SITE CIVIL AND CONSULTING ENGINEERING  
 PROGRAM MANAGEMENT  
 LANDSCAPE ARCHITECTURE  
 PERMITTING SERVICES  
 TRANSPORTATION SERVICES

**BOHLER**  
 28 BLACKWELL PARK LANE, SUITE 201  
 WARRENTON, VIRGINIA 20186  
 Phone: (540) 349-8500  
 Fax: (540) 349-8381  
 VA@BohlerEng.com

STORE  
 SERIES 08 - #1151  
 CHRISTIANSBURG  
 2200 N FRANKLIN ST  
 CHRISTIANSBURG, VA  
 24073

SHEET TITLE  
**SITE PLAN**

DWG EDITION 02.4

PRELIMINARY  
 80% SUBMITTAL  
 FOR CONSTRUCTION

JOB NO. : V218500  
 STORE : #1151  
 DATE : 5/13/2021  
 DRAWN BY : DSH  
 CHECKED BY : SFS  
 CAD ID : SITE-0

SHEET  
**C-2.0**