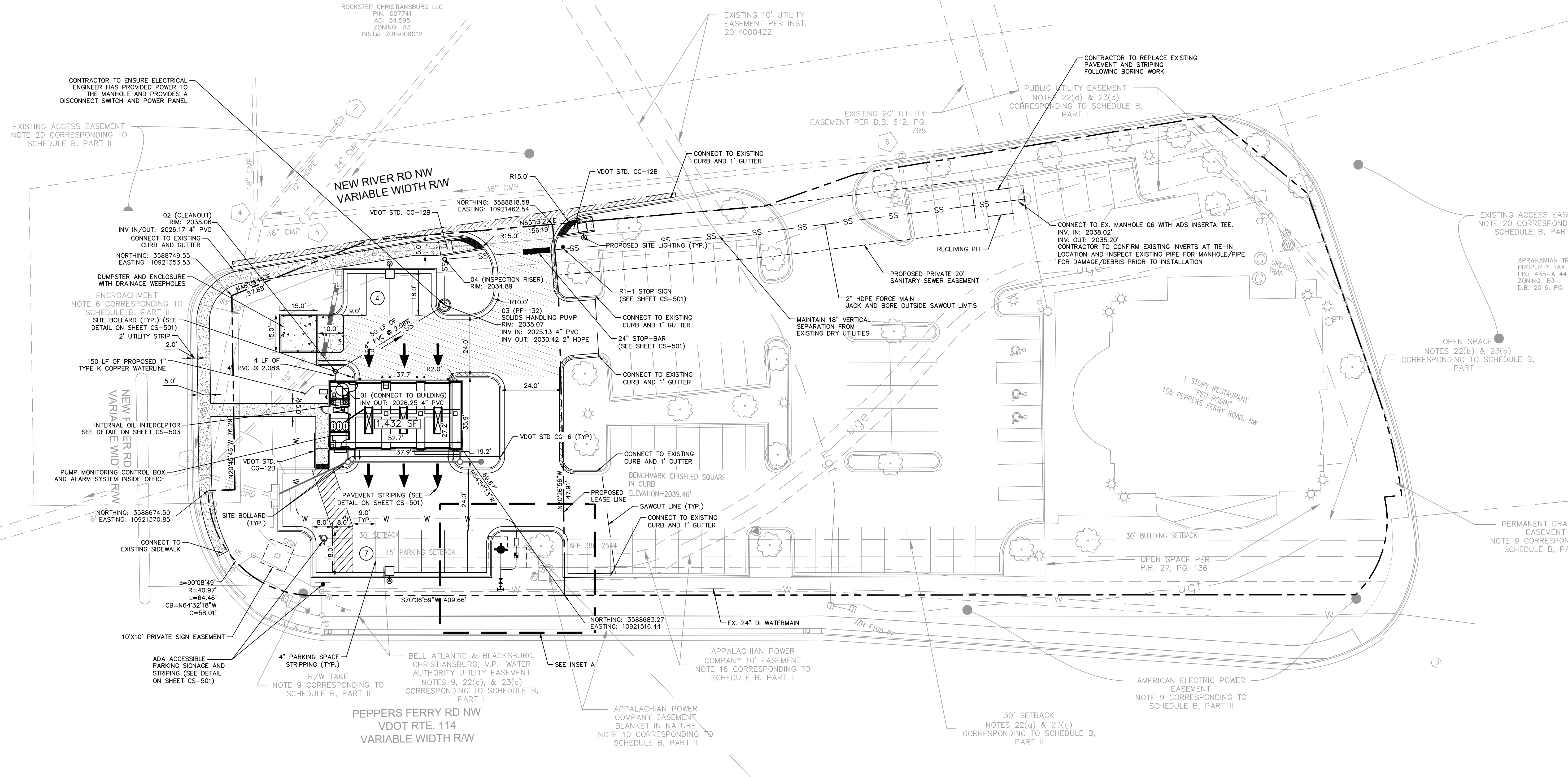


Plotted By: Anderson, Laura - Sheet: Set: KHA - Layout: CS-101 - SITE & UTILITY PLAN - January 27, 2022 - 05:43:45pm - K:\VIC-GVA\113418 - Take 5\007 - Peppers Ferry Road - Christiansburg, VA\Drawings\CS-101 - SITE & UTILITY PLAN.dwg  
 This document, together with the concepts and designs presented herein, is intended only for the specific purpose and client for which it was prepared. Reuse of and improper reliance on this document without written authorization and adaptation by Kimley-Horn and Associates, Inc. shall be without liability to Kimley-Horn and Associates, Inc.

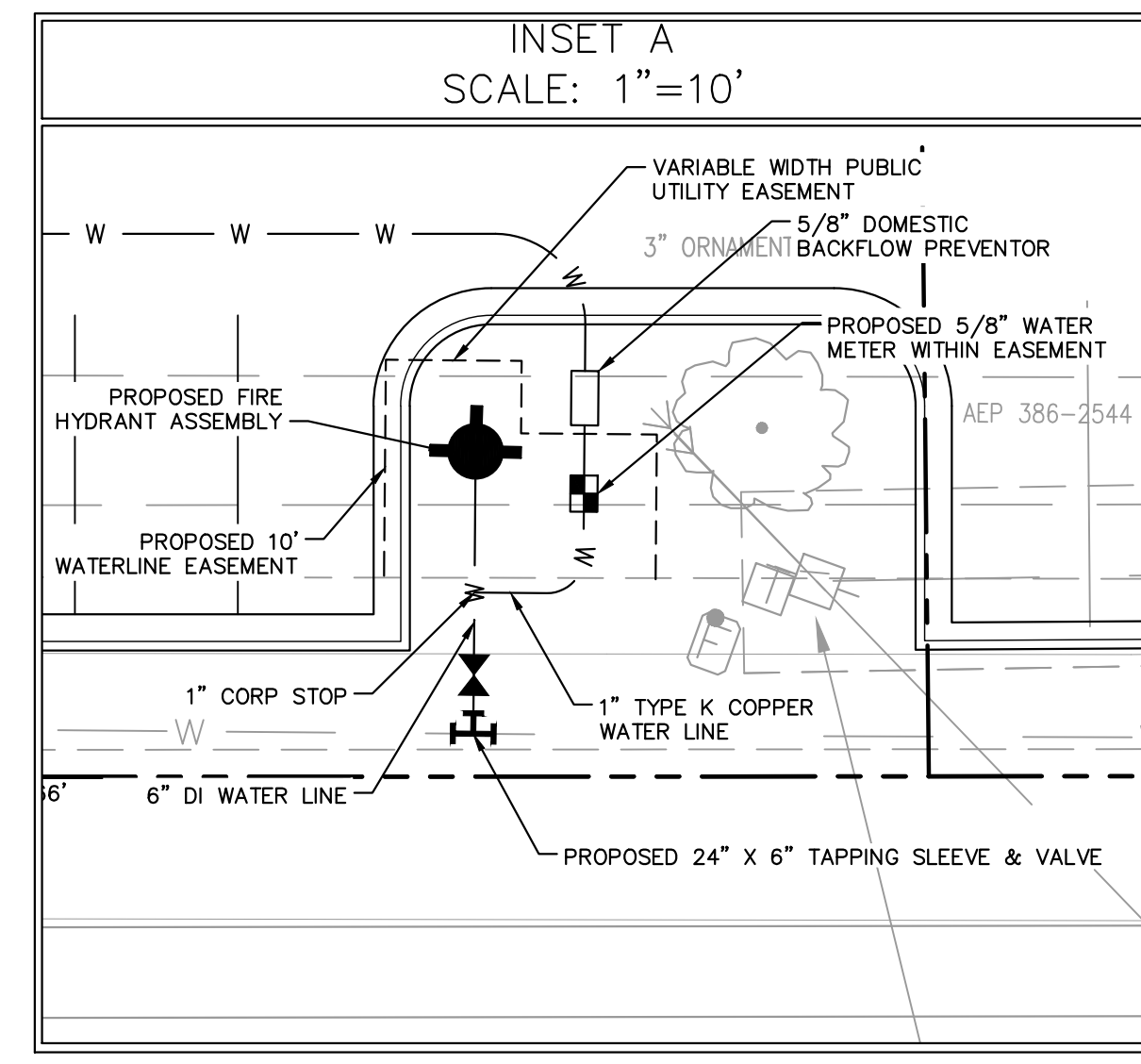


**SITE AND UTILITY NOTES**

- ALL CURB RADII ARE 5.0' UNLESS OTHERWISE NOTED.
- ALL DIMENSIONS ARE TO FACE OF CURB UNLESS OTHERWISE NOTED.
- THE CONTRACTOR IS RESPONSIBLE FOR INSTALLING ALL STOP SIGNS, DIRECTIONAL SIGNS, AND STRIPING SHOWN ON THE PLANS.
- REFER TO SHEETS CS-501 AND CS-502 FOR DETAILS.
- TWO COATS OF TRAFFIC PAINT SHALL BE SUPPLIED FOR ALL PAVEMENT STRIPING.
- REFER TO FINAL GEOTECHNICAL REPORT FOR FINAL PAVEMENT SECTIONS.
- ALL PROPOSED UTILITIES ARE TO BE INSTALLED UNDERGROUND INCLUDING ELECTRIC, TELEPHONE AND CATV IF NECESSARY. WATER, SANITARY SEWER AND SPRINKLER SYSTEM WILL BE CONNECTED TO EXISTING BUILDING. REFER TO ARCHITECTURAL PLANS FOR DETAILS.
- PROTECT AND MAINTAIN MINIMUM COVER FOR ALL EXISTING UTILITIES DURING CONSTRUCTION AT ALL TIMES.
- THERE ARE NO SERVICE BAY FLOOR DRAINS.
- THERE IS AN OIL WATER SEPARATOR IN THE BUILDING TO COLLECT ANY OIL SPILLAGE. SEE ARCHITECTURAL PLANS FOR MORE DETAILS.
- FIRE LANE SIGNS TO BE PLACED NO FURTHER THAN 3 FEET FROM THE PAVEMENT AND PLACED SO THAT THE BOTTOM OF THE SIGN IS 7 FEET FROM THE PAVEMENT.

SITE LEGEND	
LIGHT DUTY PAVEMENT SEE SECTION ON SHEET CS-501	[Pattern]
HEAVY DUTY PAVEMENT SEE SECTION ON SHEET CS-501	[Pattern]
CONCRETE SIDEWALK SEE DETAIL ON SHEET CS-501	[Pattern]
HEAVY DUTY CONCRETE SEE SECTION ON SHEET CS-501	[Pattern]
2" MILL AND REPLACE SEE DETAIL ON SHEET CS-501	[Pattern]
VDOT STD. CG-6 REVERSE CURB & GUTTER	[Pattern]

- BORING NOTES**
- CONTRACTOR SHALL HAVE PRIVATE UTILITY MARKING PERFORMED IN THE PROPOSED WORK AREA AT CONTRACTOR'S EXPENSE PRIOR TO PERFORMING ANY DRILLING/BORING WORK.
  - CONTRACTOR SHALL BE SOLELY RESPONSIBLE FOR ANY DAMAGE TO ANY EXISTING UTILITY AND WILL REPAIR/REPLACE AS NECESSARY AT NO ADDITIONAL COST THE OWNER.
  - CONTRACTOR TO COORDINATE WITH THE OWNER ON THE SCHEDULE OF THIS WORK TO MINIMIZE DISRUPTION TO FACILITY OPERATIONS.



**APPROVAL BLOCK**

APPROVED: ENGINEERING	DATE _____
APPROVED: PLANNING	DATE _____

NO.	REVISIONS	DATE	BY

**Kimley»Horn**  
 © 2022 KIMLEY-HORN AND ASSOCIATES, INC.  
 1700 WILLOW LAWN DR., SUITE 200, RICHMOND, VA 23230  
 PHONE: 804-673-3882  
 WWW.KIMLEY-HORN.COM

**COMMONWEALTH OF VIRGINIA**  
 PROFESSIONAL ENGINEER  
 LAURA P. ANDERSON  
 Lic. No. 069895  
 01/28/2022

**SITE & UTILITY PLAN**

**TAKE 5**  
**PEPPERS FERRY RD NW**  
 PREPARED FOR  
**EB PARTNERS LLC**  
 CITY OF CHRISTIANSBURG, VA

SHEET NUMBER  
**CS-101**