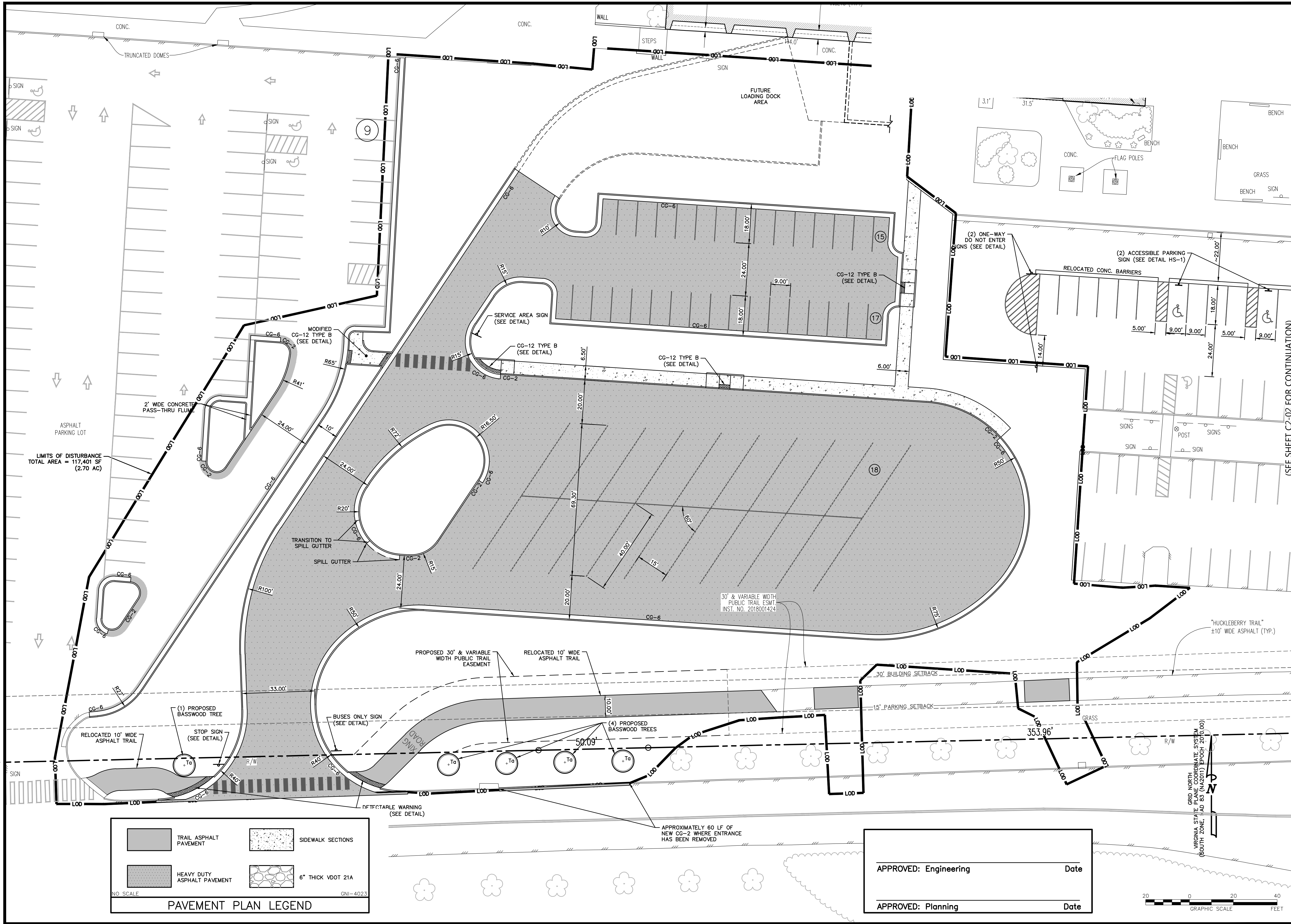


X:\Drawings\3195\ENGINEERING\Design\Plans\Entrance\Circulation_Sheets\3195_Sht_C2_Site_Layout_Plan-Circulation.dwg
 C2-01 SITE LAYOUT - 06/20/2022 9:06:31 AM, Milester, DWG To PDF.pc3, 1:1



PAVEMENT PLAN LEGEND	
	TRAIL ASPHALT PAVEMENT
	HEAVY DUTY ASPHALT PAVEMENT
	SIDEWALK SECTIONS
	6" THICK VDOT 21A

NO SCALE GNI-4023

APPROVED: Engineering Date
 APPROVED: Planning Date



GAY AND NEEL, INC.
 ENGINEERING LAND PLANNING SURVEYING
 1260 Radford Street
 Christiansburg, Virginia 24073
 Phone: (540) 381-6011
 Fax: (540) 381-2773
 Email: info@gayandneel.com
 Web: www.gayandneel.com

The drawing, design, and digital files relating to this project are the property of Gay and Neel, Inc. The reproduction, copying, or other use of this drawing without GNI's written consent is prohibited.

**ADDITIONS & RENOVATIONS
 (TRAFFIC CIRCULATION PHASE)
 CHRISTIANSBURG HIGH SCHOOL
 MCPS**
 100 INDEPENDENCE BOULEVARD NW
 TOWN OF CHRISTIANSBURG, VIRGINIA



REVISIONS		
NO.	COMMENTS	DATE

PROJECT TEAM	
PIC	TREVOR M. KIMZEY, PE
PM	MATTHEW P. TOMLINSON, PE
DESIGN	MBL, ADS, STC

ISSUE DATE	06/21/2022
GNI JOB NO.	3195
SHEET TITLE	SITE LAYOUT
SHEET NUMBER	C2-01