

NOTE: FOR CONCRETE PAVEMENT CONSTRUCTION — SEE JOINTING DETAILS 7, 8, 9, & 10 ON SHEET C-410 AND DETAIL 1 ON SHEET C-440

SITE PLAN DESIGN NOTES & KEY PLAN

- 1 PAINTED DIRECTIONAL ARROW DETAIL 1/C-400
2 PAINTED DRIVE-THRU GRAPHICS DETAIL 2/C-400
3 PAINTED STOP LINE GRAPHIC DETAIL 2/C-400
4 PAINTED ACCESSIBILITY PARKING SYMBOL DETAIL 1/C-400
5 ACCESSIBLE PARKING STALL DETAIL 3&4/C-400
5A 60" PARKING STALL DETAIL 4/C-400
5B 90" PARKING STALL DETAIL 3/C-400
6 DIRECTIONAL SIGNAGE (SEE SIGNAGE PACKAGE) DETAIL 7/C-400
6A "STOP" SIGN (SEE SIGNAGE PACKAGE) DETAIL 8/C-400
6B "ACCESSIBLE PARKING" SIGN (SEE SIGNAGE PACKAGE) DETAIL 6/C-400

- 6C "CURBSIDE DELIVERY" (SEE SIGNAGE PACKAGE)
6D "RIGHT TURN ONLY" SIGN (SEE SIGNAGE PACKAGE) DETAIL 7&8/C-400
6E "ONE WAY" SIGN (USE APPLICABLE DIRECTION) (SEE SIGNAGE PACKAGE) DETAIL 7&8/C-400
6F "LEFT TURN ONLY" SIGN (SEE SIGNAGE PACKAGE) DETAIL 7&8/C-400
6G "PEDESTRIAN CROSSWALK" SIGN (SEE SIGNAGE PACKAGE) DETAIL 7&8/C-400
6H "DO NOT ENTER" SIGN (SEE SIGNAGE PACKAGE) DETAIL 7/C-400
6I "NO PARKING" SIGN (SEE SIGNAGE PACKAGE)
6J "TWO ORDER LANES" SIGN (SEE SIGNAGE PACKAGE)

- 6K "MEAL DELIVERY ZONE" SIGN DETAIL 5B/C-440
6L BOLLARD MOUNTED SIGN DETAIL 5/C-400
7 SIDEWALK ACCESSIBLE RAMP DETAIL 3/C-410
8 CURB RAMP WITH FLARED SIDES DETAIL 2/C-410
9 CURB RAMP WITH SHORT FLARED SIDES DETAIL 1/C-410
10 DETECTABLE WARNING DEVICE DETAIL 4/C-410
11 CONCRETE SIDEWALK DETAIL 9/C-400
12 SIDEWALK WITH CURB & GUTTER DETAIL 10/C-400
13 DRIVE-THRU PLAN — 2" BELOW FFE DETAIL 12/C-430

- 13A DRIVE-THRU PLAN — FLUSH WITH FFE DETAIL 8/C-430
14 DRIVE-THRU ISOMETRIC DETAIL 9/C-430
15 SOLID PLASTIC WHEEL STOP DETAIL 5/C-410
16 LANDSCAPE & IRRIGATION PROTECTOR DETAIL 16/C-440

- 17 CONCRETE CURB & GUTTER — TYPE "B" DETAIL 11A/C-400
18 CONCRETE CURB & GUTTER — TYPE "H" MOUNTABLE DETAIL 11B/C-400
19 ROLLOVER/MOUNTABLE CURB DETAIL 11/C-430
20 SCREENED REFUSE ENCLOSURE DETAIL 2/C-430

- 21 SCREENED REFUSE ENCLOSURE STAGGERED DETAIL 3/C-430
22 SCREENED REFUSE ENCLOSURE ALTERNATE DRAINAGE DETAIL 4/C-430
23 CONCRETE BOLLARD DETAIL 5/C-420
24 TYPICAL ASPHALT PAVEMENT SECTION DETAIL 3/C-420

- 25 CONCRETE PAVING DRIVE-THRU LANE DETAIL 2/C-420
26 CONCRETE PAVEMENTS DETAIL 12/C-400
27 CONCRETE APRON @ TRASH ENCLOSURE DETAIL 12/C-410
28 ALUMINUM HANDRAIL DETAIL 8/C-420

- 29 TYPICAL ADA RAMP AND HANDRAIL DETAIL 9/C-420
30 EXPANSION JOINT DETAIL 6/C-410
31 MULTI-LANE DIRECTIONAL GRAPHICS DETAIL 6/C-420
32 CROSSWALK MARKING DETAIL 7/C-420

- 33 DRIVE-THRU ORDER POINT ISLAND DETAIL 7/C-430
34 MENU BOARD LOOP DETECTION SYSTEM DETAIL 5 & 6/C-430
35 5'x5' LANDING AND ENTRY DOOR FROST SLAB DETAIL 1/C-430
36 GREASE TRAP (SEE UTILITY PLAN)
37 BUILDING DOWNSPOUT CONNECTION (TO CONNECT TO SITE DRAINAGE SYSTEM) DETAIL 10/C-420

- 38 LANDSCAPED AREA (SEE LANDSCAPE PLAN)
39 DRIVE-THRU CLEARANCE BAR DETAIL 10/C-430
40 TYPICAL SECTION AT STORM/SANITARY STRUCTURE DETAIL 12/C-420
40A STORM WEEP HOLE DETAIL DETAIL 40/40A/C-440

- 41 PAVEMENT STRIPING AREA DETAIL 41/C-440
42 THICKENED SLAB EDGE AT RAILING CORE-DRILLS DETAIL 42/C-440
43 CONCRETE FLUME DETAIL 43/C-440
44 EX. ASPHALT / PROP. CONCRETE INTERFACE DETAIL 44/C-440

- 45 BUTT JOINT (ASPHALT) DETAIL 4/C-420
45A BUTT JOINT (CONCRETE) DETAIL 1/C-440
46 PAVEMENT EDGE DETAIL DETAIL 11/C-410
47 SINGLE BIKE RACK DETAIL 47/C-440

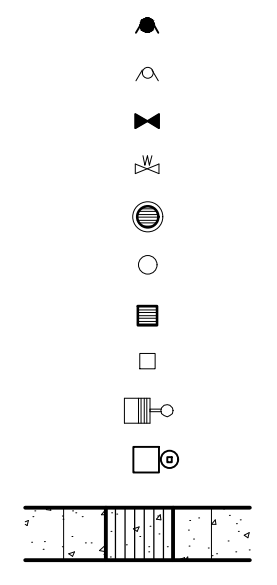
- 48 TRANSFORMER
49 CHICK-FIL-A PRIME SIGN (SEE SIGNAGE PACKAGE)
50 FLAGPOLE (SEE SIGNAGE PACKAGE)

- 51 RETAINING WALL WITH 42" HANDRAIL ON TOP
52 OUTDOOR PATIO SPACE. SEE ARCHITECTURAL PLANS SHEET A-101
53 4" THICK CONCRETE STRIP BETWEEN BUILDING AND BACK OF CURB
54 4" THICK CONCRETE STRIP BETWEEN CURBS

- 55 4" WIDE PAINT STRIPE
56 CURB & GUTTER AT ACCESSIBLE RAMP DETAIL 56/C-440
57 MAGNETIC DELINEATOR DETAIL 57/C-440
58 CASH STATION LOCATION
59 PROPOSED F2F CANOPY — SEE CANOPY PLANS
60 PROPOSED OMD CANOPY — SEE CANOPY PLANS

- 61 OMIT BLOCKS AT REAR OF DUMPSTER ENCLOSURE. SEE DETAIL SHEET C-430
62 STORM SEWER CLEANOUT DETAIL DETAIL 62/C-440
63 STRIPING PER CHICK-FIL-A DUAL FLEX LANE REQUIREMENTS
64 RETURNED CURB ACCESSIBLE RAMP DETAIL 64/C-301

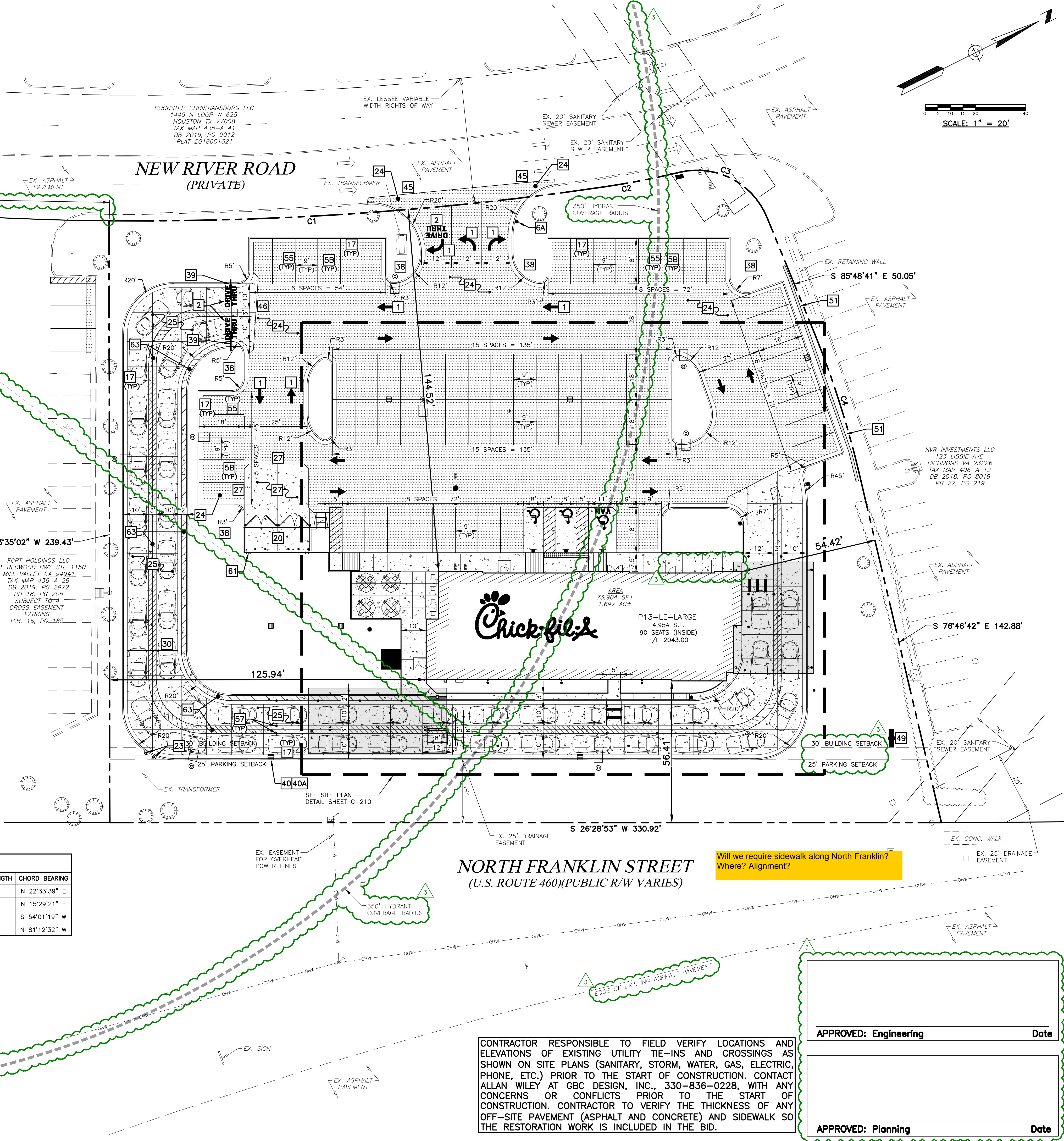
LEGEND



- PROP. FIRE HYDRANT
EX. FIRE HYDRANT
PROP. VALVE
EX. VALVE
PROP. MANHOLE
EX. MANHOLE
PROP. INLET
EX. BOX INLET
EX. LIGHT POLE
PROP. LIGHT POLE
PROP. ACCESSIBLE RAMP — RAMP IS NOT TO BE SCORED OR GROOVED
EX. CURB
PROP. CURB & GUTTER
PROP. ASPHALT PAVEMENT
PROP. CONCRETE PAVEMENT/WALK

CURVE TABLE						
CURVE	LENGTH	RADIUS	DELTA	TANGENT	CHORD LENGTH	CHORD BEARING
C1	197.96'	1273.59'	8°54'21"	99.18'	197.76'	N 22°33'39" E
C2	30.53'	348.08'	5°01'34"	15.28'	30.52'	N 15°29'21" E
C3	42.34'	30.00'	80°51'16"	25.56'	38.91'	S 54°01'19" W
C4	58.21'	372.66'	8°57'01"	29.17'	58.15'	N 81°12'32" W

FLOOD ZONE DESIGNATION: THIS PROPERTY IS LOCATED WITHIN AN AREA HAVING ZONE DESIGNATIONS OF "X" BY THE FEDERAL EMERGENCY MANAGEMENT AGENCY, ON FLOOD INSURANCE RATE MAP NO. 51121C0141C, WITH AN EFFECTIVE DATE OF SEPTEMBER 25, 2009, IN THE TOWN OF CHRISTIANBURG, STATE OF VIRGINIA, WHICH IS THE CURRENT FLOOD INSURANCE RATE MAP FOR THE COMMUNITY IN WHICH SAID PROPERTY IS SITUATED



NORTH FRANKLIN STREET
(U.S. ROUTE 460)(PUBLIC R/W VARIES)

Will we require sidewalk along North Franklin?
Where? Alignment?

CONTRACTOR RESPONSIBLE TO FIELD VERIFY LOCATIONS AND ELEVATIONS OF EXISTING UTILITY TIE-INS AND CROSSINGS AS SHOWN ON SITE PLANS (SANITARY, STORM, WATER, GAS, ELECTRIC, PHONE, ETC.) PRIOR TO THE START OF CONSTRUCTION. CONTACT ALLAN WILEY AT GBC DESIGN, INC., 330-836-0228, WITH ANY CONCERNS OR CONFLICTS PRIOR TO THE START OF CONSTRUCTION. CONTRACTOR TO VERIFY THE THICKNESS OF ANY OFF-SITE PAVEMENT (ASPHALT AND CONCRETE) AND SIDEWALK SO THE RESTORATION WORK IS INCLUDED IN THE BID.

APPROVED: Engineering

Date

APPROVED: Planning

Date

Permit



Chick-fil-A
5200 Buffington Road
Atlanta, Georgia 30349-2998

GBC DESIGN, INC.

565 White Pond Dr.
Akron, OH 44320-1123
Phone 330-836-0228
www.GBCDesign.com



CHICK-FIL-A
CHRISTIANBURG FSU
2580 NORTH FRANKLIN STREET
CHRISTIANBURG, VA 24073

FSU# 05049

REVISION SCHEDULE		DESCRIPTION
NO.	DATE	CFA COMMENTS
1	5/20/2022	PLAN REVIEW
2	6/23/2022	EDC
3	6/1/2022	

GBC PROJECT #	54165A
PRINTED FOR	Permit
DATE	4/28/22
DRAWN BY	B.A.W.

Information contained on this drawing and in all digital files produced for above named project may not be reproduced in any manner without express written or verbal consent from authorized project representatives.

SHEET
SITE PLAN

SHEET NUMBER

C-200