

SSMH C
TOP = 2137.15'
INVIN 8" = 2121.95'
INVO 8" PVC = 2121.95'

SSMH B
TOP = 2110.71'
INVIN 8" = 2108.2'
INVO 8" PVC = 2108.21'



parker
DESIGN GROUP
PLANNERS • LANDSCAPE ARCHITECTS
2122 Carolina Ave. SW
Roanoke, VA 24014
(540)-387-1153
www.parkerdgm.com

TOWN OF CHRISTIANBURG APPROVAL BLOCK

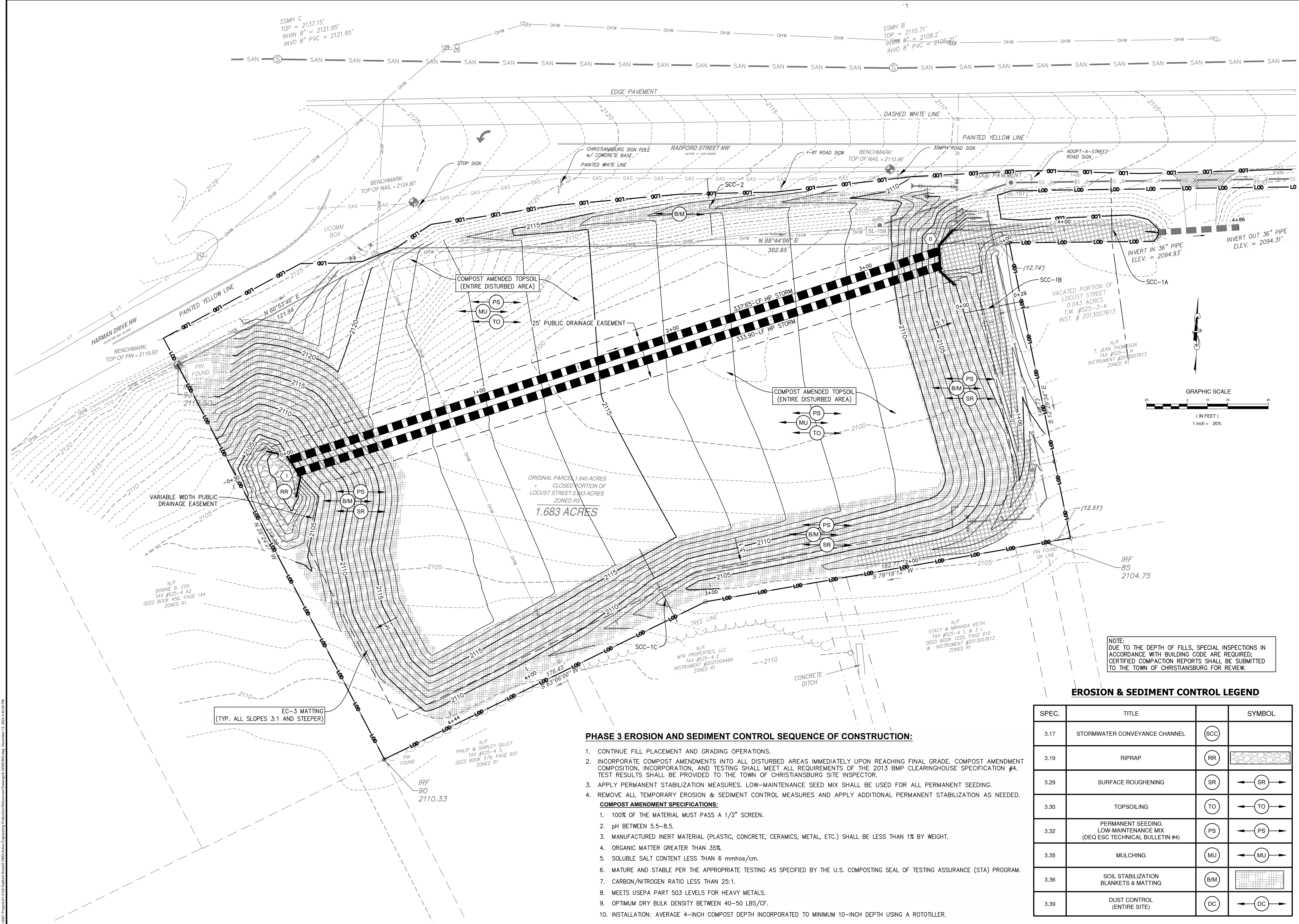
PLANNING DIRECTOR	DATE
ENGINEERING DIRECTOR	DATE

**PAD-READY MASS GRADING PLAN
FOR VAUGHN PROPERTIES LLC
TM# 525-4 A3 & 525-3-K
CORNER OF RADFORD STREET & HARMAN DRIVE
TOWN OF CHRISTIANBURG, VIRGINIA**

REVISIONS

5/8/2022 - TOWN 1ST SUBMITTAL REVIEW
8/25/2022 - TOWN 2ND SUBMITTAL REVIEW
11/21/2022 - TOWN 3RD SUBMITTAL REVIEW
12/09/2022 - TOWN 4TH SUBMITTAL REVIEW

DESIGNED BY: CEP
DRAWN BY: CEP
CHECKED BY: SLR
SCALE: 1" = 20'
DATE: DECEMBER 13, 2022
PROJECT NUMBER: 21-0102
SHEET TITLE: MASS GRADING AND PHASE 3 E&S PLAN
C3.2
8 OF 14



PHASE 3 EROSION AND SEDIMENT CONTROL SEQUENCE OF CONSTRUCTION:

- CONTINUE FILL PLACEMENT AND GRADING OPERATIONS.
 - INCORPORATE COMPOST AMENDMENTS INTO ALL DISTURBED AREAS IMMEDIATELY UPON REACHING FINAL GRADE. COMPOST AMENDMENT COMPOSITION, INCORPORATION, AND TESTING SHALL MEET ALL REQUIREMENTS OF THE 2013 BMP CLEARINGHOUSE SPECIFICATION #4. TEST RESULTS SHALL BE PROVIDED TO THE TOWN OF CHRISTIANBURG SITE INSPECTOR.
 - APPLY PERMANENT STABILIZATION MEASURES. LOW-MAINTENANCE SEED MIX SHALL BE USED FOR ALL PERMANENT SEEDING.
 - REMOVE ALL TEMPORARY EROSION & SEDIMENT CONTROL MEASURES AND APPLY ADDITIONAL PERMANENT STABILIZATION AS NEEDED.
- COMPOST AMENDMENT SPECIFICATIONS:**
- 100% OF THE MATERIAL MUST PASS A 1/2" SCREEN.
 - pH BETWEEN 5.5-8.5.
 - MANUFACTURED INERT MATERIAL (PLASTIC, CONCRETE, CERAMICS, METAL, ETC.) SHALL BE LESS THAN 1% BY WEIGHT.
 - ORGANIC MATTER GREATER THAN 35%.
 - SOLUBLE SALT CONTENT LESS THAN 6 mmhos/cm.
 - MATURE AND STABLE PER THE APPROPRIATE TESTING AS SPECIFIED BY THE U.S. COMPOSTING SEAL OF TESTING ASSURANCE (STA) PROGRAM.
 - CARBON/NITROGEN RATIO LESS THAN 25:1.
 - MEETS USEPA PART 503 LEVELS FOR HEAVY METALS.
 - OPTIMUM DRY BULK DENSITY BETWEEN 40-50 LBS/CF.
 - INSTALLATION: AVERAGE 4-INCH COMPOST DEPTH INCORPORATED TO MINIMUM 10-INCH DEPTH USING A ROTOTILLER.

EROSION & SEDIMENT CONTROL LEGEND

SPEC.	TITLE	SYMBOL
3.17	STORMWATER CONVEYANCE CHANNEL	SCC
3.19	RIPRAP	RR
3.29	SURFACE ROUGHENING	SR
3.30	TOPSOILING	TO
3.32	PERMANENT SEEDING LOW-MAINTENANCE MIX (DEQ ESC TECHNICAL BULLETIN #4)	PS
3.35	MULCHING	MU
3.36	SOIL STABILIZATION BLANKETS & MATTING	B/M
3.39	DUST CONTROL (ENTIRE SITE)	DC

NOTE:
DUE TO THE DEPTH OF FILLS, SPECIAL INSPECTIONS IN ACCORDANCE WITH BUILDING CODE ARE REQUIRED; CERTIFIED COMPACTION REPORTS SHALL BE SUBMITTED TO THE TOWN OF CHRISTIANBURG FOR REVIEW.

