

NOTE: FOR CONCRETE PAVEMENT CONSTRUCTION — SEE JOINTING DETAILS 7, 8, 9, & 10 ON SHEET C-410 AND DETAIL 1 ON SHEET C-440

SITE PLAN DESIGN NOTES & KEY PLAN

1	PAINTED DIRECTIONAL ARROW	DETAIL 1/C-400
2	PAINTED DRIVE-THRU GRAPHICS	DETAIL 2/C-400
3	PAINTED STOP LINE GRAPHIC	DETAIL 2/G-400
4	PAINTED ACCESSIBILITY PARKING SYMBOL	DETAIL 1/C-400
5	ACCESSIBLE PARKING STALL	DETAIL 384/C-400
5A	60" PARKING STALL	DETAIL 4/G-400
5B	90" PARKING STALL	DETAIL 3/C-400
6	DIRECTIONAL SIGNAGE (SEE SIGNAGE PACKAGE)	DETAIL 7/C-400
6A	"STOP" SIGN (SEE SIGNAGE PACKAGE)	DETAIL 8/C-400
6B	"ACCESSIBLE PARKING" SIGN (SEE SIGNAGE PACKAGE)	DETAIL 6/C-400

6C	"CURBSIDE DELIVERY" (SEE SIGNAGE PACKAGE)	
6D	"RIGHT TURN ONLY" SIGN (SEE SIGNAGE PACKAGE)	DETAIL 76/C-400
6E	"ONE WAY" SIGN (USE APPLICABLE DIRECTION) (SEE SIGNAGE PACKAGE)	DETAIL 76/C-400
6F	"LEFT TURN ONLY" SIGN (SEE SIGNAGE PACKAGE)	DETAIL 78/C-400
6G	"PEDESTRIAN CROSSWALK" SIGN (SEE SIGNAGE PACKAGE)	DETAIL 79/C-400
6H	"DO NOT ENTER" SIGN (SEE SIGNAGE PACKAGE)	DETAIL 77/C-400
6I	"NO PARKING" SIGN (SEE SIGNAGE PACKAGE)	

6J	"TWO ORDER LANES" SIGN (SEE SIGNAGE PACKAGE)	
6K	"MEAL DELIVERY ZONE" SIGN	DETAIL 58/C-440
6L	BOLLARD MOUNTED SIGN	DETAIL 5/C-400
7	SIDEWALK ACCESSIBLE RAMP	DETAIL 3/C-410
8	CURB RAMP WITH FLARED SIDES	DETAIL 2/G-410
9	CURB RAMP WITH SHORT FLARED SIDES	DETAIL 1/G-410
10	DETECTABLE WARNING DEVICE	DETAIL 4/C-410
11	CONCRETE SIDEWALK	DETAIL 9/C-400
12	SIDEWALK WITH CURB & GUTTER	DETAIL 10/C-400
13	DRIVE-THRU PLAN — 2" BELOW FFE	DETAIL 12/G-430

13A	DRIVE-THRU PLAN — FLUSH WITH FFE	DETAIL 8/C-430
14	DRIVE-THRU ISOMETRIC	DETAIL 9/C-430
15	SOLID PLASTIC WHEEL STOP	DETAIL 5/G-410

16	LANDSCAPE & IRRIGATION PROTECTOR	DETAIL 16/G-440
17	CONCRETE CURB & GUTTER — TYPE "B"	DETAIL 11A/C-400
18	CONCRETE CURB & GUTTER — TYPE "H" MOUNTABLE	DETAIL 11B/C-400

19	ROLLOVER/MOUNTABLE CURB	DETAIL 11/C-430
20	SCREENED REFUSE ENCLOSURE	DETAIL 2/C-430
21	SCREENED REFUSE ENCLOSURE STAGGERED	DETAIL 3/C-430

22	SCREENED REFUSE ENCLOSURE ALTERNATE DRAINAGE	DETAIL 4/G-430
23	CONCRETE BOLLARD	DETAIL 5/C-420
24	TYPICAL ASPHALT PAVEMENT SECTION	DETAIL 3/C-420

25	CONCRETE PAVING DRIVE-THRU LANE	DETAIL 2/C-420
26	CONCRETE PAVEMENTS	DETAIL 12/C-400
27	CONCRETE APRON @ TRASH ENCLOSURE	DETAIL 12/C-410

28	ALUMINUM HANDRAIL	DETAIL 8/C-420
29	TYPICAL ADA RAMP AND HANDRAIL	DETAIL 9/C-420
30	EXPANSION JOINT	DETAIL 6/C-410

31	MULTI-LANE DIRECTIONAL GRAPHICS	DETAIL 6/G-420
32	CROSSWALK MARKING	DETAIL 7/G-420
33	DRIVE-THRU ORDER POINT ISLAND	DETAIL 7/C-430

34	MENU BOARD LOOP DETECTION SYSTEM	DETAIL 5 & 6/C-430
35	5'x5' LANDING AND ENTRY DOOR FROST SLAB	DETAIL 1/C-430
36	GREASE TRAP (SEE UTILITY PLAN)	

37	BUILDING DOWNSPOUT CONNECTION (TO CONNECT TO SITE DRAINAGE SYSTEM)	DETAIL 10/C-420
38	LANDSCAPED AREA (SEE LANDSCAPE PLAN)	
39	DRIVE-THRU CLEARANCE BAR	DETAIL 10/C-430

40	TYPICAL SECTION AT STORM/SANITARY STRUCTURE	DETAIL 10/C-420
40A	STORM WEEP HOLE DETAIL	DETAIL 40/40A/C-440
41	PAVEMENT STRIPING AREA	DETAIL 41/C-440

42	THICKENED SLAB EDGE AT RAILING CORE-DRILLS	DETAIL 42/C-440
43	CONCRETE FLUME	DETAIL 43/C-440
44	EX. ASPHALT / PROP. CONCRETE INTERFACE	DETAIL 44/G-440

45	BUTT JOINT (ASPHALT)	DETAIL 4/C-420
45A	BUTT JOINT (CONCRETE)	DETAIL 1/G-440
46	PAVEMENT EDGE DETAIL	DETAIL 11/C-410

47	SINGLE BIKE RACK	DETAIL 47/C-440
48	EXISTING TRANSFORMER	
49	CHICK-FIL-A PRIME SIGN (SEE SIGNAGE PACKAGE)	

50	FLAGPOLE (SEE SIGNAGE PACKAGE)	
51	RETAINING WALL WITH 42" HANDRAIL ON TOP	
52	OUTDOOR PATIO SPACE. SEE ARCHITECTURAL PLANS SHEET A-101	

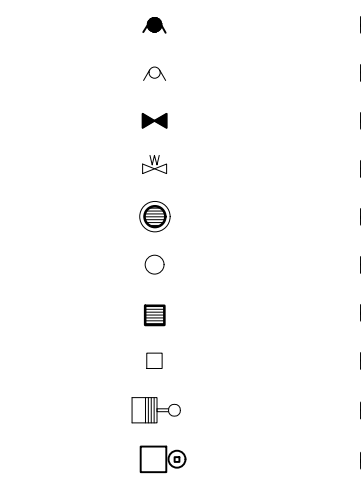
53	4" THICK CONCRETE STRIP BETWEEN BUILDING AND BACK OF CURB	
54	4" THICK CONCRETE STRIP BETWEEN CURBS	
55	4" WIDE PAINT STRIPE	

56	CURB & GUTTER AT ACCESSIBLE RAMP	DETAIL 56/C-440
57	MAGNETIC DELINEATOR	DETAIL 57/C-440
58	CASH STATION LOCATION	

59	PROPOSED F2F CANOPY — SEE CANOPY PLANS	
60	PROPOSED OMD CANOPY — SEE CANOPY PLANS	
61	OMIT BLOCKS AT REAR OF DUMPSTER ENCLOSURE. SEE DETAIL SHEET C-430	

62	STORM SEWER CLEANOUT DETAIL	DETAIL 62/C-440
63	STRIPING PER CHICK-FIL-A DUAL FLEX LANE REQUIREMENTS	
64	RETURNED CURB ACCESSIBLE RAMP	DETAIL 64/C-301

LEGEND



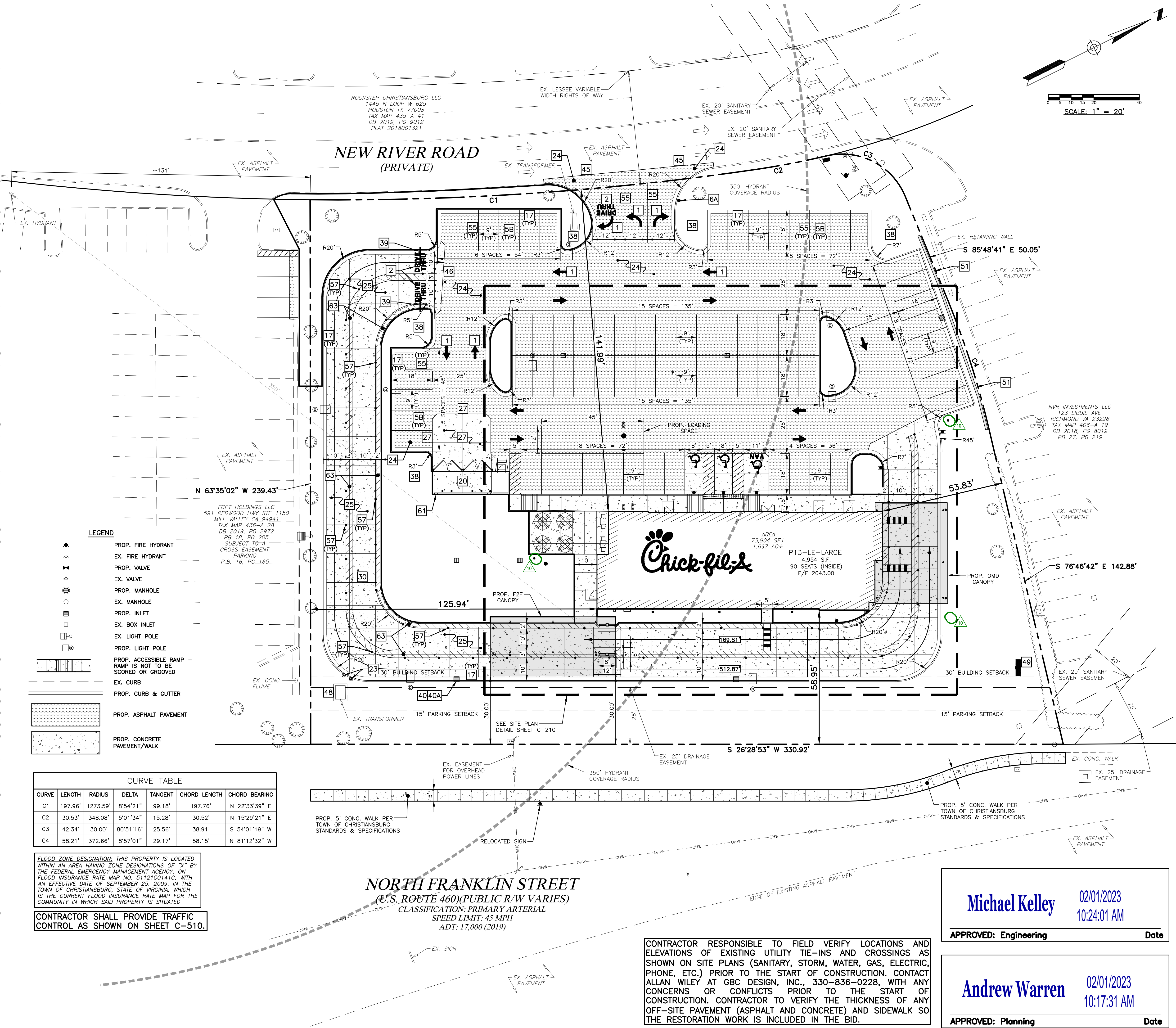
▲	PROP. FIRE HYDRANT
△	EX. FIRE HYDRANT
●	PROP. VALVE
○	EX. VALVE
⊙	PROP. MANHOLE
○	EX. MANHOLE
□	PROP. INLET
□	EX. BOX INLET
□	EX. LIGHT POLE
□	PROP. LIGHT POLE
▨	PROP. ACCESSIBLE RAMP — RAMP IS NOT TO BE SCORED OR GROOVED
▨	EX. CURB
▨	PROP. CURB & GUTTER

▨	PROP. ASPHALT PAVEMENT
▨	PROP. CONCRETE PAVEMENT/WALK

CURVE TABLE					
CURVE	LENGTH	RADIUS	DELTA	TANGENT	CHORD BEARING
C1	197.96'	1273.59'	8°54'21"	99.18'	N 22°33'39" E
C2	30.53'	348.08'	5°01'34"	15.28'	N 15°29'21" E
C3	42.34'	30.00'	80°51'16"	25.56'	S 54°01'19" W
C4	58.21'	372.66'	8°57'01"	29.17'	N 81°12'32" W

FLOOD ZONE DESIGNATION: THIS PROPERTY IS LOCATED WITHIN AN AREA HAVING ZONE DESIGNATIONS OF "X" BY THE FEDERAL EMERGENCY MANAGEMENT AGENCY, ON FLOOD INSURANCE RATE MAP NO. 51121C0141C, WITH AN EFFECTIVE DATE OF SEPTEMBER 25, 2009, IN THE TOWN OF CHRISTIANBURG, STATE OF VIRGINIA, WHICH IS THE CURRENT FLOOD INSURANCE RATE MAP FOR THE COMMUNITY IN WHICH SAID PROPERTY IS SITUATED

CONTRACTOR SHALL PROVIDE TRAFFIC CONTROL AS SHOWN ON SHEET C-510.



NORTH FRANKLIN STREET
(U.S. ROUTE 460)(PUBLIC R/W VARIES)
CLASSIFICATION: PRIMARY ARTERIAL
SPEED LIMIT: 45 MPH
ADT: 17,000 (2019)

CONTRACTOR RESPONSIBLE TO FIELD VERIFY LOCATIONS AND ELEVATIONS OF EXISTING UTILITY TIE-INS AND CROSSINGS AS SHOWN ON SITE PLANS (SANITARY, STORM, WATER, GAS, ELECTRIC, PHONE, ETC.) PRIOR TO THE START OF CONSTRUCTION. CONTACT ALLAN WILEY AT GBC DESIGN, INC., 330-836-0228, WITH ANY CONCERNS OR CONFLICTS PRIOR TO THE START OF CONSTRUCTION. CONTRACTOR TO VERIFY THE THICKNESS OF ANY OFF-SITE PAVEMENT (ASPHALT AND CONCRETE) AND SIDEWALK SO THE RESTORATION WORK IS INCLUDED IN THE BID.

Michael Kelley
APPROVED: Engineering
Date

02/01/2023
10:24:01 AM

Andrew Warren
APPROVED: Planning
Date

02/01/2023
10:17:31 AM

Chick-fil-A
5200 Buffington Road
Atlanta, Georgia 30349-2998

GBC DESIGN, INC.
565 White Pond Dr.
Akron, OH 44320-1123
Phone 330-836-0228
www.GBCDesign.com

COMMONWEALTH OF VIRGINIA
GARY R. ROUSE
Lic. No. 6102054679
1-5-23
PROFESSIONAL ENGINEER

CHICK-FIL-A
CHRISTIANBURG FSU
2580 NORTH FRANKLIN STREET
CHRISTIANBURG, VA 24073

FSU# 05049

REVISION SCHEDULE	DESCRIPTION
NO. DATE	
1 5/20/2022	CFA COMMENTS
2 6/23/2022	PLAN REVIEW
3 6/1/2022	EDC
4 9/9/2022	FOR CONSTRUCTION
5 9/21/2022	SITE
6 11/7/2022	UTILITY COMMENTS
10 1/5/2023	TOWN COMMENTS

GBC PROJECT # 54165A
PRINTED FOR Permit
DATE 4/28/22
DRAWN BY B.A.W.

Information contained on this drawing and in all digital files produced for above named project may not be reproduced in any manner without express written or verbal consent from authorized project representatives.

SHEET
SITE PLAN
Permit
SHEET NUMBER

C-200