

Michael Kelley

04/20/2023
10:31:21 AM

APPROVED: Engineering

Date

Andrew Warren

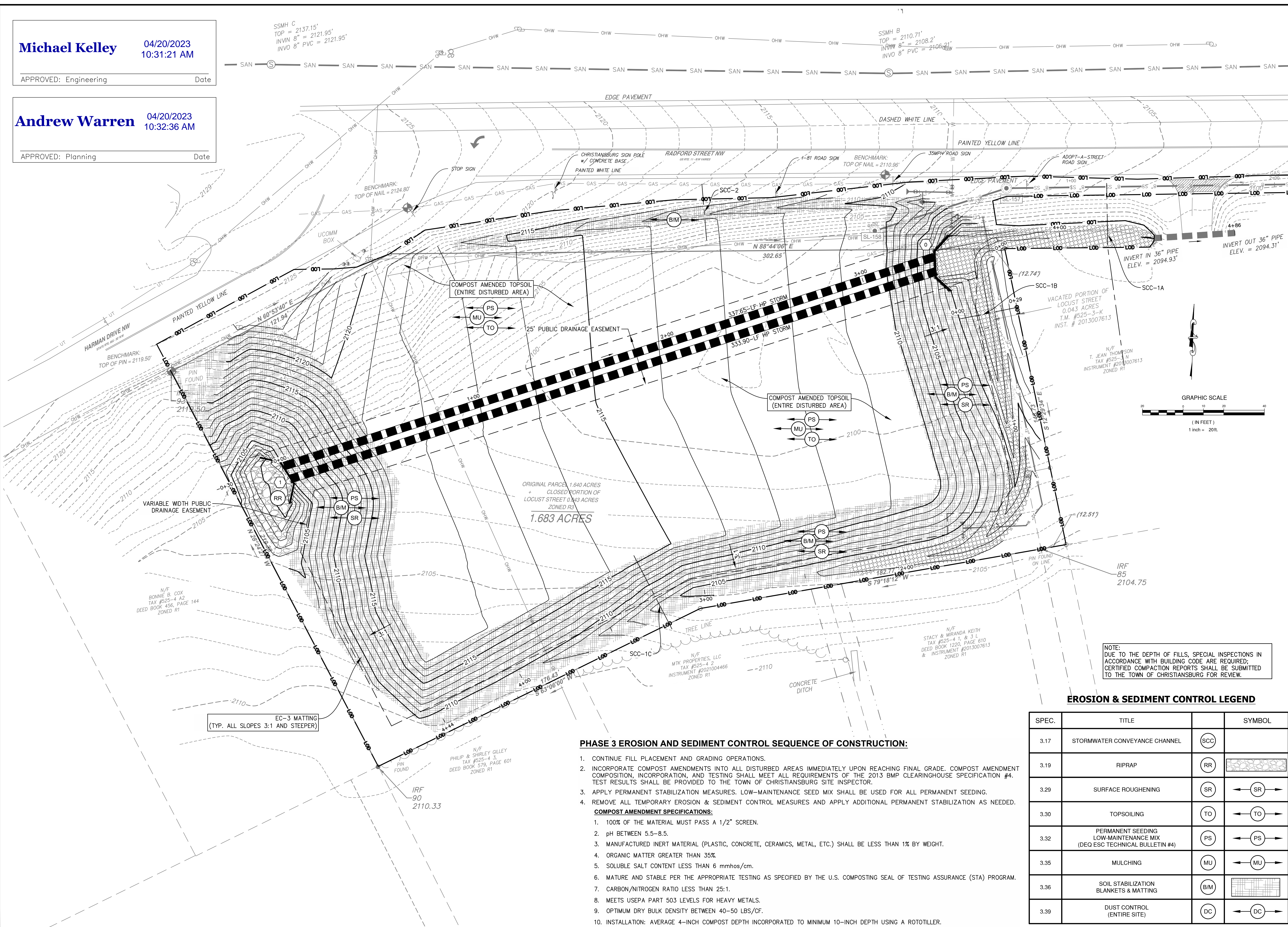
04/20/2023
10:32:36 AM

APPROVED: Planning

Date

SSMH C
TOP = 2137.15'
INVIN 8" = 2121.95'
INVO 8" PVC = 2121.95'

SSMH B
TOP = 2110.71'
INVIN 8" = 2108.2'
INVO 8" PVC = 2108.21'

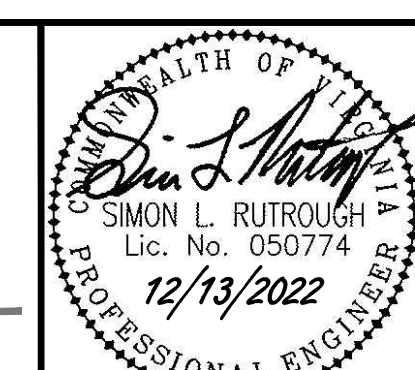


PHASE 3 EROSION AND SEDIMENT CONTROL SEQUENCE OF CONSTRUCTION:

1. CONTINUE FILL PLACEMENT AND GRADING OPERATIONS.
 2. INCORPORATE COMPOST AMENDMENTS INTO ALL DISTURBED AREAS IMMEDIATELY UPON REACHING FINAL GRADE. COMPOST AMENDMENT COMPOSITION, INCORPORATION, AND TESTING SHALL MEET ALL REQUIREMENTS OF THE 2013 BMP CLEARINGHOUSE SPECIFICATION #4. TEST RESULTS SHALL BE PROVIDED TO THE TOWN OF CHRISTIANBURG SITE INSPECTOR.
 3. APPLY PERMANENT STABILIZATION MEASURES. LOW-MAINTENANCE SEED MIX SHALL BE USED FOR ALL PERMANENT SEEDING.
 4. REMOVE ALL TEMPORARY EROSION & SEDIMENT CONTROL MEASURES AND APPLY ADDITIONAL PERMANENT STABILIZATION AS NEEDED.
- COMPOST AMENDMENT SPECIFICATIONS:**
1. 100% OF THE MATERIAL MUST PASS A 1/2" SCREEN.
 2. pH BETWEEN 5.5-8.5.
 3. MANUFACTURED INERT MATERIAL (PLASTIC, CONCRETE, CERAMICS, METAL, ETC.) SHALL BE LESS THAN 1% BY WEIGHT.
 4. ORGANIC MATTER GREATER THAN 35%.
 5. SOLUBLE SALT CONTENT LESS THAN 6 mmhos/cm.
 6. MATURE AND STABLE PER THE APPROPRIATE TESTING AS SPECIFIED BY THE U.S. COMPOSTING SEAL OF TESTING ASSURANCE (STA) PROGRAM.
 7. CARBON/NITROGEN RATIO LESS THAN 25:1.
 8. MEETS USEPA PART 503 LEVELS FOR HEAVY METALS.
 9. OPTIMUM DRY BULK DENSITY BETWEEN 40-50 LBS/CF.
 10. INSTALLATION: AVERAGE 4-INCH COMPOST DEPTH INCORPORATED TO MINIMUM 10-INCH DEPTH USING A ROTOTILLER.

EROSION & SEDIMENT CONTROL LEGEND

SPEC.	TITLE	SYMBOL
3.17	STORMWATER CONVEYANCE CHANNEL	(SCC)
3.19	RIPRAP	(RR)
3.29	SURFACE ROUGHENING	(SR)
3.30	TOPSOILING	(TO)
3.32	PERMANENT SEEDING LOW-MAINTENANCE MIX (DEQ ESC TECHNICAL BULLETIN #4)	(PS)
3.35	MULCHING	(MU)
3.36	SOIL STABILIZATION BLANKETS & MATTING	(B/M)
3.39	DUST CONTROL (ENTIRE SITE)	(DC)



parker
DESIGN GROUP
PLANNERS • LANDSCAPE ARCHITECTS
2122 Carolina Ave. SW
Roanoke, VA 24014
(540)-387-1153
www.parkerdgm.com

TOWN OF CHRISTIANBURG APPROVAL BLOCK

PLANNING DIRECTOR	DATE
ENGINEERING DIRECTOR	DATE

PAD-READY MASS GRADING PLAN
FOR VAUGHN PROPERTIES LLC
TM# 525-4 A3 & 525-3-K
CORNER OF RADFORD STREET & HARMAN DRIVE
TOWN OF CHRISTIANBURG, VIRGINIA

REVISIONS

5/8/2022	TOWN 1ST SUBMITTAL REVIEW
8/25/2022	TOWN 2ND SUBMITTAL REVIEW
11/21/2022	TOWN 3RD SUBMITTAL REVIEW
12/09/2022	TOWN 4TH SUBMITTAL REVIEW

DESIGNED BY: CEP
DRAWN BY: CEP
CHECKED BY: SLR
SCALE: 1" = 20'
DATE: DECEMBER 13, 2022
PROJECT NUMBER: 21-0102
SHEET TITLE: MASS GRADING AND PHASE 3 E&S PLAN
C3.2
8 OF 14