



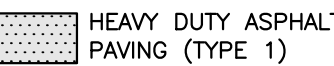

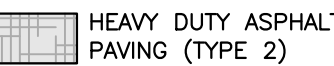




SITE PLAN NOTES

1. PAVEMENT FLOW LINE RADIUS OF 5' IS TYPICAL.
2. G.C. SHALL COORDINATE THE EXACT SANITARY SEWER AND DOMESTIC WATER LATERAL BUILDING TIE IN LOCATIONS WITH THE ARCHITECTURAL PLANS.
3. THE G.C. IS RESPONSIBLE FOR PROVIDING AND INSTALLING ALL CONDUIT ASSOCIATED WITH REQUIRED UTILITIES FOR THE PROPOSED BUILDING AND ANY NECESSARY UTILITIES ON-SITE SUCH AS LIGHTING, ELECTRICAL, ETC.
4. PROPOSED BUILDINGS WILL HAVE SPRINKLER SERVICE. SEE ARCHITECTURAL DRAWINGS FOR ADDITIONAL DETAILS.
5. SANITARY WASTE LINES FROM BUILDING SHALL BE A MINIMUM 4" PVC (MIN. SLOPE 2.08%) OR 6" PVC (MIN. SLOPE 1.04%). SEE ARCHITECTURALS.

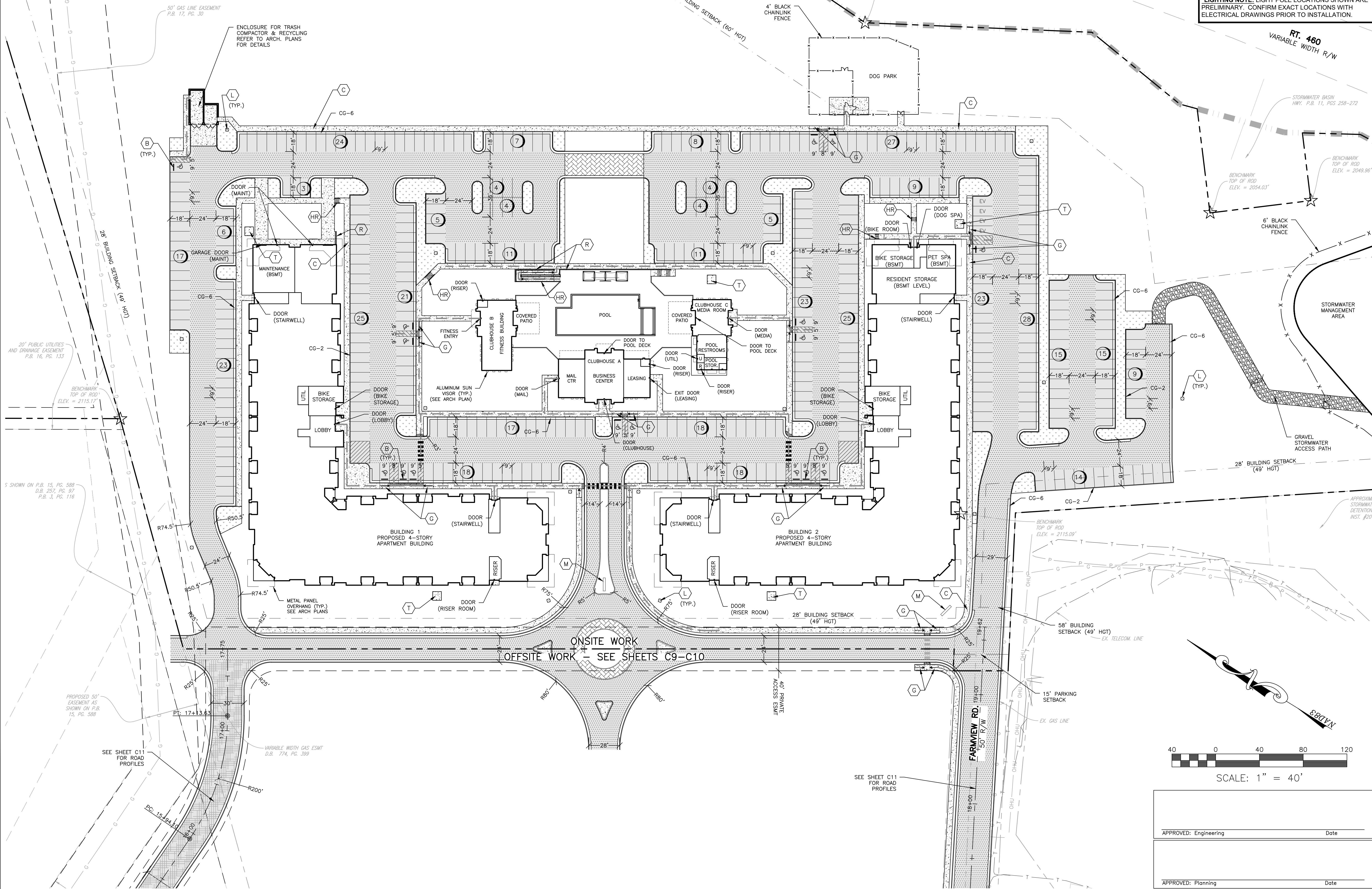
PAVEMENT MARKING NOTES:

1. STANDARD PARKING STRIPING: SURFACES SHOULD BE CLEAN AND DRY. STRIPING SHALL BE 4" WIDE, COLOR WHITE. SURFACES SHOULD BE CLEAN AND DRY. STRIPING SHALL BE 4" WIDE, COLOR "HANDICAP BLUE"
2. HANDICAP PARKING STRIPING: SURFACES SHOULD BE CLEAN AND DRY. SYMBOL SHALL BE MIN. 36"x36" SIZE, COLOR "HANDICAP BLUE"
3. HANDICAP SYMBOL: 

LEGEND

- | | | | |
|--|---------------------------------------|--|--|
| (B) BUMPER BLOCK | (HR) HANDRAIL |  LIGHT DUTY ASPHALT PAVING |  HEAVY DUTY ASPHALT PAVING (TYPE 1) |
| (C) CONCRETE SIDEWALK 5' WIDE UNLESS OTHERWISE NOTED | (L) LIGHT POLE* |  HEAVY DUTY CONCRETE |  HEAVY DUTY ASPHALT PAVING (TYPE 2) |
| (G) CG-12 CURB RAMP | (R) RETAINING WALL (DESIGN BY OTHERS) |  CONCRETE |  GREENSPACE |
| (M) MONUMENT SIGN (DESIGN BY OTHERS) | (V) ACCESS DOOR |  PAVERS |  GRAVEL |
| (T) CONCRETE PAD FOR TRANSFORMER (COORD. WITH ELEC. PLANS) | | | |
- PROPOSED ACCESSIBLE ROUTE

*LIGHTING NOTE: LIGHT POLE LOCATIONS SHOWN ARE PRELIMINARY. CONFIRM EXACT LOCATIONS WITH ELECTRICAL DRAWINGS PRIOR TO INSTALLATION.



BALZER & ASSOCIATES
PLANNERS / ARCHITECTS
ENGINEERS / SURVEYORS

Roanoke / Richmond
New River Valley
Shenandoah Valley
www.balzer.cc
80 College Street
Suite H
Christiansburg, VA 24073
540.381.4290



THE VERGE APARTMENTS
LAYOUT & DIMENSIONAL PLAN

DRAWN BY GLM
DESIGNED BY GLM
CHECKED BY JRT
DATE 4/15/24
SCALE 1" = 40'
REVISIONS

C6
PROJECT NO. 24240020.00