



Town of Christiansburg, Virginia

---

# Municipal Separate Storm Sewer System Annual Report

For

General Permit No. VAR040025

Permit Year

July 1, 2024 through June 30, 2025

This annual report is submitted in accordance with 9VAC25-890-40 as part of the requirement for permit coverage to discharge stormwater to surface waters of the Commonwealth of Virginia consistent with the VAR04 General Permit effective date November 1, 2023.

Submitted: October 1, 2025

## TABLE OF CONTENTS

<a href="#">1.0 GENERAL ANNUAL REPORTING REQUIREMENTS</a>	<a href="#">1</a>
1.1. General Information (Part I.D.3.a)	1
1.2. <a href="#">Reporting Period (Part I.D.3.b)</a>	<a href="#">1</a>
1.3. Signed Certification (Part I.D.3.c)	1
1.4. <a href="#">Reporting for MCMs #1 - #6 (Part I.D.3.d)</a>	<a href="#">1</a>
1.5. <a href="#">Evaluation of the MS4 Program Implementation (Part I.D.3.e)</a>	<a href="#">2</a>
<a href="#">2.0 MINIMUM CONTROL MEASURES</a>	<a href="#">4</a>
2.1. <a href="#">MCM #1: Public Education and Outreach</a>	<a href="#">4</a>
2.1.1. <a href="#">High Priority Stormwater Issues (Part I.E.1.g(1))</a>	<a href="#">4</a>
2.1.2. <a href="#">High Priority Stormwater Issue Communication Strategies (Part I.E. 1.g(2))</a>	<a href="#">4</a>
2.1.3. <a href="#">MCM #1 Evaluation (Part I.D.3.e and Part I.E.1.g.(4))</a>	<a href="#">5</a>
2.2. <a href="#">MCM #2: Public Involvement and Participation</a>	<a href="#">6</a>
2.2.1. <a href="#">Public Comment/Complaint Summary (Part I.E.2.i(1)&amp;(2))</a>	<a href="#">6</a>
2.2.2. <a href="#">MS4 Program Webpage (Part I.E.2.i(3))</a>	<a href="#">6</a>
2.2.3. <a href="#">Public Involvement Activities Implemented (Part I.E.2.i(5)&amp;(6))</a>	<a href="#">6</a>
2.2.4. <a href="#">Public Involvement Activity Metric and Evaluation (Part I.E.2.i(7))</a>	<a href="#">6</a>
2.2.5. <a href="#">MS4 Collaboration (Part I.E.2.i(8))</a>	<a href="#">7</a>
2.2.6. <a href="#">MS4 Program Plan BMP Measurable Goals</a>	<a href="#">8</a>
2.2.7. <a href="#">MCM #2 Evaluation (Part I.D.3.e)</a>	<a href="#">8</a>
2.3. <a href="#">MCM #3: Illicit Discharge Detection and Elimination</a>	<a href="#">9</a>
2.3.1. <a href="#">MS4 Map and Information Table (Part I.E.3.e(1))</a>	<a href="#">9</a>
2.3.2. <a href="#">Dry Weather Screening (Part I.E.3.e(2))</a>	<a href="#">9</a>
2.3.3. <a href="#">Illicit Discharges (Part I.E.3.e(3))</a>	<a href="#">9</a>
2.3.4. <a href="#">MS4 Program Plan BMP Measurable Goals</a>	<a href="#">10</a>
2.3.5. <a href="#">MCM #3 Evaluation (Part I.D.3.e)</a>	<a href="#">10</a>
2.4. <a href="#">MCM #4: Construction Site Stormwater Runoff Control</a>	<a href="#">11</a>
2.4.1. <a href="#">Implementation of VESCP and Town Ordinance (Part I.E.4.a(1))</a>	<a href="#">11</a>
2.4.2. <a href="#">Site Stormwater Runoff Inspections (Part I.E.4.e(1))</a>	<a href="#">11</a>
2.4.3. <a href="#">Enforcement Actions (Part I.E.4.e(2))</a>	<a href="#">11</a>
2.4.4. <a href="#">MCM #4 Evaluation (Part I.D.3.e)</a>	<a href="#">11</a>
2.5. <a href="#">MCM #5: Post-Construction Stormwater Management</a>	<a href="#">12</a>
2.5.1. <a href="#">Implementation of VSMP and Town Ordinance (Part I.E.5.e(1))</a>	<a href="#">12</a>
2.5.1.1. <a href="#">Privately-Owned VSMP Inspections (Part I.E.5.e (1)(a))</a>	<a href="#">12</a>
2.5.1.2. <a href="#">Privately-Owned VSMP Enforcement Actions (Part I.E.5.e (1)(b))</a>	<a href="#">12</a>
2.5.2. <a href="#">Stormwater Management Facility Inspections (Part I.E.5.e(2))</a>	<a href="#">12</a>
2.5.3. <a href="#">Stormwater Management Facility Maintenance (Part I.E.5.e(3))</a>	<a href="#">13</a>

2.5.4. <a href="#">Virginia Construction Stormwater General Permit Database (Part I.E.5.e(4))</a> .....	14
2.5.5. <a href="#">DEQ BMP Warehouse (Part I.E.5.e(5)&amp;(6))</a> .....	14
2.5.6. <a href="#">MS4 Program Plan BMP Measurable Goals</a> .....	15
2.5.7. <a href="#">MCM #5 Evaluation (Part I.D.3.e)</a> .....	15
2.6. <a href="#">MCM #6: Pollution Prevention and Good Housekeeping</a> .....	16
2.6.1. <a href="#">Operational Procedures (Part I.E.6.y(1))</a> .....	16
2.6.2. <a href="#">Newly Developed SWPPPs (Part I.E.6.y(2)&amp;(3))</a> .....	16
2.6.3. <a href="#">Modified or Delisted SWPPPs (Part I.E.6.y(4)&amp;(5))</a> .....	16
2.6.4. <a href="#">Nutrient Management Plans (Part I.E.6.y(6))</a> .....	17
2.6.5. <a href="#">Training Events (Part I.E.6.y(7))</a> .....	17
2.6.5.1. <a href="#">Training Dates (Part I.E.6.y(7)(a))</a> .....	17
2.6.5.2. <a href="#">Quantity Trained (Part I.E.6.y(7)(b))</a> .....	17
2.6.5.3. <a href="#">Training Objective (Part I.E.6.y(7)(c))</a> .....	17
2.6.6. <a href="#">MS4 Program Plan BMP Measurable Goals</a> .....	18
2.6.7. <a href="#">MCM #6 Evaluation (Part I.D.3.e)</a> .....	18
3.0 <a href="#">TMDL SPECIAL CONDITIONS</a> .....	9
3.1. <a href="#">Crab Creek and Upper Roanoke River E.coli TMDL Action Plan</a> .....	19
3.1.1. <a href="#">Bacteria TMDL Implementation (Part II.B.11)</a> .....	19
3.2. <a href="#">Crab Creek and Upper Roanoke River Sediment TMDL Action Plan</a> .....	21
3.2.1. <a href="#">Sediment TMDL Implementation (Part II.B.11)</a> .....	21
3.3. <a href="#">Roanoke River PCB TMDL Action Plan</a> .....	24
3.3.1. <a href="#">PCB TMDL Implementation (Part II.B.11)</a> .....	24

## APPENDICES

[Appendix A: Documentation of Public Education and Outreach Activities](#)

[Appendix B: Documentation of Public Involvement Activities](#)

[Appendix C: List of Illicit Discharges](#)

Appendix D: Documentation of Land Disturbance Complaints/MS4Program Plan Comments/Complaints

Appendix E: Documentation of Nutrient Management Plan implementation

## TABLES

Table 1:	Summary of MS4 Program Plan Changes .....	2
Table 2:	High Priority Stormwater Issues.....	4
Table 3:	Public Input or Complaints and Responses .....	6
Table 4:	Public Involvement Activities Implemented .....	7
Table 5:	MS4 Program Plan BMP Measurable Goals for MCM #2.....	8
Table 6:	Illicit Discharges .....	9
Table 7:	MS4 Program Plan BMP Measurable Goals for MCM #3.....	10
Table 8:	Project(s) Not in Conformance with VESCP and Town Ordinance.....	11
Table 9:	Maintenance Activities Performed on Stormwater Management Facilities .....	13
Table 10:	MS4 Program Plan BMP Measurable Goals for MCM #5.....	15
Table 11:	Good Housekeeping Operational Procedures Developed or Modified .....	16
Table 12:	New SWPPPs Developed .....	16
Table 13:	SWPPPs Modified or Delisted.....	17
Table 14:	Status of Turf and Landscape Nutrient Management Plans .....	17
Table 15:	Training Events.....	18
Table 16:	MS4 Program Plan BMP Measurable Goals for MCM #6.....	18
Table 17:	Bacteria TMDL Action Plan Summary of Actions .....	19
Table 18:	Sediment TMDL Action Plan Summary of Actions.....	21
Table 19:	2023-2024 POC Reductions .....	23
Table 20:	PCB TMDL Action Plan Summary of Actions .....	24

BMP	Best Management Practices
DEQ	Virginia Department of Environmental Quality
ESC	Erosion and Sediment Control
IDDE	Illicit Discharge Detection and Elimination
MCM	Minimum Control Measure
MS4	Municipal Separate Storm Sewer System
POC	Pollutants of Concern
SWPPP	Stormwater Pollution Prevention Plan
TMDL	Total Maximum Daily Load
TOC	Town of Christiansburg
VESCP	Virginia Erosion and Sediment Control Program
VSMP	Virginia Stormwater Management Program
VPDES	Virginia Pollution Discharge Elimination System
WLA	Wasteload Allocation

THE PLACE TO BE  
**CHRISTIANSBURG VA**

## 1.0 GENERAL ANNUAL REPORTING REQUIREMENTS

### 1.1. General Information (Part I.D.3.a)

Permittee Name: Town of Christiansburg

Permit Number: VAR040025

### 1.2. Reporting Period (Part I.D.3.b)

The reporting period for which the annual report is being submitted:

July 1, 2024 through June 30, 2025

### 1.3. Signed Certification (Part I.D.3.c)

A signed certification as per Part IV K

"I certify under penalty of law that this document and all attachments were prepared under my direction or supervision in accordance with a system designed to ensure that qualified personnel properly gather and evaluate the information submitted. Based on my inquiry of the person or persons who manage the system, or those persons directly responsible for gathering the information, the information submitted is, to the best of my knowledge and belief, true, accurate, and complete. I am aware that there are significant penalties for submitting false information, including the possibility of fine and imprisonment for knowing violations."

Printed Name: Randy Wingfield

Title: Town Manager

Signature:  Date: 9-26-25

### 1.4. Reporting for MCMs #1 - #6 (Part I.D.3.d and e)

Include information for each annual reporting item specified in Part I.E:

Reporting information for each Minimum Control Measure is provided in Section 2.0.

## 1.5 Evaluation of the MS4 Program Implementation (Part I.D.3.e)

An evaluation for each Minimum Control Measure is provided in Section 2.0. Changes that are necessary to be made to the MS4 Program Plan are summarized in Table 1.

**Table 1: Summary of MS4 Program Plan Changes**

Please note this table only includes changes for the 24-25 reporting year. The Town will provide the previous annual report summaries upon request.

**Updated Program Plan:** The Town initially intended to include new ordinance references in the updated Program Plan. As the ordinance is still being drafted, the Town will be updating the Program Plan first. The Town has a draft prepared and will post an updated Program Plan.

**MCM #1 and #2-** The Town is expanding the strategies used to meet MCM#1 and #2 and is amending the Program Plan to allow a wide range of acceptable strategies. This has become necessary as the Town now has a wider range of volunteers and programs.

**MCM #2 and #4 –** Some complaints/concerns took longer than 24 hours for the appropriate staff to respond to due to need to for research into the issue, filtering through multiple Town departments, or complaints being received when staff were out of town. The Program Plan is still effective.

**MCM #3 Illicit Discharge Detection and Elimination:** The Town is reviewing documentation and enforcement procedures on land disturbance issues on non-regulated sites, and this process has moved to an interdepartmental committee focused on code compliance. The Program Plan and IDDE manual/MCM 4 SOPs may be amended to address this issue. It is likely these sediment discharges will fall under the IDDE ordinance. Changes to enforcement protocols are being looked at as the Town amends Town code to comply with the new state stormwater regulation. The Town's MS4 map was not updated to include the new MS4 Regulated Service area based on the 2020 Census Urban areas. The Town will provide the updated map and outfall information to DEQ as required by 11/1/2025.

**MCM #5 Post-construction Stormwater Management:** The Town has completed engineering studies of multiple older Town owned and/or maintained stormwater BMPs for maintenance and is reviewing the studies.

**MCM #6:** The Town already has written Standard Operating/Good Housekeeping Procedures and is currently reviewing them to ensure that they meet the objectives established in Part I.E.6.a and b. The biennial training for the Parks and Recreation staff was inadvertently not scheduled and will be conducted this fall. This training typically involves only a few staff members. Town is reviewing current training to determine if new training is required in 2025-2026 to meet the remaining Good Housekeeping training objectives. The Town is developing a maintenance schedule to meet Part I.E.6.j.

**MCM #6:** During the yearly review of Town properties in regard to activities that would require development of a SWPPP, it was determined that bulk materials storage at Sunset Cemetery creates a high-priority facility that will require a SWPPP. SWPPP will be developed by 12/31/2025.

TMDL Action Plan updates: Updates were posted for public comment on 6/26/2025. TMDL Action Plans that incorporated public comment have been posted to the Town's Stormwater Information webpage

Sediment Action Plan: The Lomoor Channel stabilization pollutant of concern reductions were not calculated from the Urban Stream Restoration protocols due to the stabilization being done with Flexamat. The Town is exploring other protocols that may allow quantification of sediment reductions as this was a significant gully that directly discharged into a stream in the Roanoke River watershed. The Blue Leaf Stream Restoration needs repair and the scope of work is being included in the design plans for the upstream extension of the restoration. The Street Sweeping sediment reductions were calculated using the Mass Loading Approach from the 2011 Street Sweeping BMP. Please see the 2025 Sediment Action Plan for details. The Town has a study in place to guide adoption of the newer criteria per the updated Action Plan.

Per the updated Sediment TMDL Action Plan, the Town has achieved the required sediment reductions for both the Crab Creek and the Roanoke River TMDLs. Please see the updated Action Plans for details.

## 2.0 MINIMUM CONTROL MEASURES

### 2.1. MCM #1: Public Education and Outreach

#### 2.1.1. High Priority Stormwater Issues (Part I.E.1.g(1))

A list of high-priority stormwater issues addressed in the public education and outreach program:

A list of high-priority stormwater issues addressed in public education and outreach program is provided in Table 2.

#### 2.1.2. High Priority Stormwater Issue Communication Strategies (Part I.E. 1.g(2))

A list of strategies used to communicate each high-priority stormwater issue:

A list of strategies used to communicate each high-priority stormwater issue is provided in Table 2. Appendix A includes documentation of the communication efforts described in Table 2.

Table 2: High Priority Stormwater Issues							
#	Stormwater Issue	Strategy	Communication	Completion Status			
1	Education on special water quality concerns (PCBs/Household Hazardous Waste)	Media & Traditional Written Materia	Article in the Christiansburg Connection newsletter and posted on the Town's Facebook page.	<input checked="" type="checkbox"/>	Yes	<input type="checkbox"/>	No
2,3	Education on special water quality concerns (E. coli) and stream health (sediment/lawn care)	Public Education Activities and Alternative Materials	The Town manned a booth at the New River Valley Home Expo (3/22-23/2025 with Town of Blacksburg, Virginia Tech, and Montgomery County) to talk with citizens about local water pollution issues of <i>E.coli</i> and sediment in streams. Dog waste bags and educational materials were distributed.	<input checked="" type="checkbox"/>	Yes	<input type="checkbox"/>	No
3	Education on Stream Health (Stream restorations)	Media & Traditional Written Material	Article in the Christiansburg Connection newsletter and posted on the Town's Facebook page	<input checked="" type="checkbox"/>	Yes	<input type="checkbox"/>	No

1,2,3	Education on special water quality concerns, (E. coli, PCBs) and stream health (sediment)	Media and Traditional Written Materials	Public Stewardship blurb on back cover of the Town's 2024 Public Drinking Water Quality Report. Report disseminated on paper in Town Hall, available on Town webpage, and posted on Town Facebook page.	<input checked="" type="checkbox"/>	Yes	<input type="checkbox"/>	No
3	Education on stream health (Stream Restorations and sediment)	Speaking Engagements	Virginia Master Naturalist NRV Chapter virtual presentation on Stream Restorations to Improve Water Quality in Christiansburg. Meeting date 10/21/2024	<input checked="" type="checkbox"/>	Yes	<input type="checkbox"/>	No
	Education on special water quality concerns (E. coli)	Media Materials	Post on Town's Facebook page about cleaning up after your dog and noting the Town provided pet waste stations.	<input checked="" type="checkbox"/>	Yes	<input type="checkbox"/>	No

### 2.1.3. MCM #1 Evaluation (Part I.D.3.e/I.E.1.g(3) and(4))

Review the MCM to determine the MS4 Program's effectiveness and whether or not changes to the MS4 Program Plan are necessary:

Were all MCM #1 communications accomplished to the intended public audience indicated in the MS4 Program Plan? ☒ Yes (Effective) ☐ No (Ineffective)

Program changes are in Section 1.5. No high-priority issues were changed. No public education and outreach activities specifically included education regarding climate change.

## 2.2. MCM #2: Public Involvement and Participation

### 2.2.1. Public Comment/Complaint Summary (Part I.E.2.i(1) and (2))

A summary of any public comments on the MS4 program received (including stormwater complaints) and responses:

If any MS4 Program comments or stormwater pollution complaints were received from the public, were responses provided?

☒ Yes (Refer to Table 3) ☐ No ☐ Not Applicable

Table 3: Public Comments or Complaints and Responses
<b>Complaint Illicit Discharges/Spills:</b> 11 Reported Complaints Response: Site visits by Town employee or Fire Department per Town's IDDE Manual. Appendix C contains the list of Illicit Discharge Reports
<b>Complaint Land Disturbing Activities:</b> 27 Reported Complaints Response: Response by Environmental Inspector/Environmental Program Manager/other Town Employee within 24 hours of complaint or next business day. Appendix D includes documentation of Land Disturbance Complaints.
<b>Comment or Complaint on MS4 Program Plan:</b> 6 Comments/Complaints/Potential Stormwater Pollution Concern This includes comments/complaints/inquiries to Town actions and policies that stem from the Program Plan. Appendix D includes documentation of Comment/Complaint on MS4 Program Plan.

### 2.2.2. MS4 Program Webpage (Part I.E.2.f(3))

The webpage address is <https://www.christiansburg.org/250/Stormwater-Information-and-Education>

### 2.2.3. Public Involvement Activities Implemented (Part I.E.2.f(5) and (6))

A description of the implemented public involvement activities is provided in Table 4. There were no efforts to specifically reach out and engage all economic and ethnic groups. There were no specific activities conducted that included education on climate change. Individual presenters at Stormwater Days may have included climate change education but this was not documented.

### 2.2.4. Public Involvement Activity Metric and Evaluation (Part I.E.2.f(7))

A report of the metric as defined for each activity and an evaluation as to whether or not the activity is beneficial to improving water quality is provided in Table 4. Appendix B includes documentation of the public involvement activities.

Table 4: Public Involvement Activities Implemented						
Activity Description	Metric	Collaboration	Beneficial			
Stream Monitoring Towne Branch Native Plant monitoring and remediation	Continue survey/remove invasive plants	No	<input checked="" type="checkbox"/>	Yes	<input type="checkbox"/>	No
Pollution Prevention: Town of Christiansburg Adopt-a-Spot program. Multiple sites and dates	10/13/2024, Wades Lane, 15 participants, 2 bags of trash 4/13/2025, Wades Lane, 29 participants, 2 bags of trash, 4/13/2025, College St, 17 participants, 8 bags of trash	No	<input checked="" type="checkbox"/>	Yes	<input type="checkbox"/>	No
Restoration: Diamond Hills stream cleanup on 4/5/2025	8 volunteers removed 10 bags of trash, one grill cover, and one horse blanket.	No	<input checked="" type="checkbox"/>	Yes	<input type="checkbox"/>	No
Restoration: Diamond Hills stream cleanup on 12/7/2024	12 volunteers removed 17 bags of trash	No	<input checked="" type="checkbox"/>	Yes	<input type="checkbox"/>	No
Stream Monitoring: New River Conservancy Water Watchers	Monitoring reports returned to Town and New River Conservancy. Monitoring on Crab Creek and Walnut Branch. Crab Creek site is ongoing. Walnut Branch site stopped monitoring after 3/10/2025	No	<input checked="" type="checkbox"/>	Yes	<input type="checkbox"/>	No
Stream Monitoring: Save Our Streams monitoring group	Monitoring reports returned to Town and SOS. Monitoring on Towne Branch, Crab Creek and an unnamed tributary to Crab Creek	No	<input checked="" type="checkbox"/>	Yes	<input type="checkbox"/>	No
Educational Event: CAC FINS summer camp stream day	8/1/2024. Approximately 30 campers plus additional counselors.	No	<input checked="" type="checkbox"/>	Yes	<input type="checkbox"/>	No
Educational Event: Montgomery County Public Schools Stormwater Days	4/15/2025 and 4/16/2025, 635 sixth graders from Blacksburg Middle School, Shawsville Middle School, Auburn Middle School, and Christiansburg Middle School. Chaperones not counted in attendance numbers.	Virginia Tech, Montgomery County, Town of Blacksburg	<input checked="" type="checkbox"/>	Yes	<input type="checkbox"/>	No

#### 2.2.5. MS4 Collaboration (Part I.E.2.f(8))

The name of other MS4 permittees collaborated with in the public involvement opportunities:

If applicable, the name of other MS4 permittees collaborated with for any of the public involvement opportunities are provided in Table 4.

### 2.2.6. MS4 Program Plan BMP Measurable Goals

The MS4 Program Plan BMPs measurable goals are provided in Table 5.

Table 5: MS4 Program Plan BMP Measurable Goals for MCM #2		
BMP	Measurable Goal	Completeness Status
2.1	Was documentation of the public input or complaints on the MS4 program and MS4 Program Plan maintained?	<input checked="" type="checkbox"/> Yes <input type="checkbox"/> No <input type="checkbox"/> Not Applicable
2.1	Is the effective MS4 permit and coverage letter on the webpage?	<input checked="" type="checkbox"/> Yes <input type="checkbox"/> No
2.1	Is the most current MS4 Program Plan on the webpage?	<input checked="" type="checkbox"/> Yes
2.1	Is the annual report for each year of the term covered by this permit posted to the webpage no later than 30 days after submittal to the department?	<input checked="" type="checkbox"/> Yes <input type="checkbox"/> No
2.1	Is there a mechanism for the public to report potential illicit discharges, improper disposal or spills to the MS4, complaints regarding land disturbing activities or other potential stormwater pollution concerns on the webpage?	<input checked="" type="checkbox"/> Yes <input type="checkbox"/> No
2.1	Is there a method for how the public can provide input of the MS4 Program Plan on the webpage?	<input checked="" type="checkbox"/> Yes <input type="checkbox"/> No

### 2.2.7. MCM #2 Evaluation (Part I.D.3.e)

Review the MCM to determine the MS4 Program's effectiveness and whether or not changes to the MS4 Program Plan are necessary:

Were all MCM #2 responses Yes or Not Applicable?

☒ Yes (Effective) ☐ No (Still effective, see below)

The updated Program Plan that reflects changes in the 2023 General Permit will be posted immediately after completion.

If any items are determined to be ineffective, describe changes necessary to the MS4 Program. Include the response in Section 1.5.

## 2.3. MCM #3: Illicit Discharge Detection and Elimination

### 2.3.1. MS4 Map and Information Table (Part I.E.3.e(1))

A confirmation statement that the MS4 map and information table have been updated to reflect any changes to the MS4 occurring on or before June 30 of the reporting year:

Were the MS4 storm sewer map and outfall information table updated to reflect any changes to the MS4 occurring on or before June 30 of the reporting year? ☐ Yes ☐ No  
☒ N/A (no additional outfalls) See Section 2.3.5. No new outfalls were added. The new regulated service area was not added. See Table 1.

### 2.3.2. Dry Weather Screening (Part I.E.3.e(2))

The total number of outfalls screened during the reporting period as part of the dry weather screening program:

Were at least 50 outfalls screened during the reporting period? ☒ Yes ☐ No

The number of outfalls screened during the reporting yard as part of the dry weather screening program is 77.

### 2.3.3. Illicit Discharges (Part I.E.3.e(3))

A list of illicit discharges to the MS4 including spills reaching the MS4:

Were there any illicit discharges to the MS4 including spills reaching the MS4?  
☒ Yes (Refer to Table 6) ☐ Not Applicable (No illicit discharges)

Table 6: Illicit Discharges

Illicit Discharge See Appendix C

Part I.E.3.e(3)(a) Location and Source: See Appendix C

Part I.E.3.e(3)(b) Date Observed & Date Reported: See Appendix C

Part I.E.3.e(3)(c) Detected during Screening, Reported by Public or Other (Describe): See Appendix C

Part I.E.3.e(3)(d) Investigation Resolution: See Appendix C

Part I.E.3.e(3)(e) Description of Follow-up Activities: See Appendix C

Part I.E.3.e(3)(f) Date Investigation Closed: See Appendix C

### 2.3.4. MS4 Program Plan BMP Measurable Goals

The MS4 Program Plan BMPs measurable goals are provided in Table 7.

Table 7: MS4 Program Plan BMP Measurable Goals for MCM #3		
BMP	Measurable Goal	Completeness Status
3.1	Was a GIS file geodatabase submitted to DEQ?	<input type="checkbox"/> Yes <input checked="" type="checkbox"/> No (due on 11/1/25)
3.1	Was written notification provided to any downstream adjacent MS4 of any known interconnection established or discovered during the permit reporting year?	<input type="checkbox"/> Yes <input type="checkbox"/> No <input checked="" type="checkbox"/> Not Applicable (No new or discovered)
3.2	Were all reported or observed non-stormwater discharges eliminated?	<input type="checkbox"/> Yes <input checked="" type="checkbox"/> No
3.2	Were inspections, surveillance, monitoring and enforcement procedures in response to all reports implemented?	<input checked="" type="checkbox"/> Yes <input type="checkbox"/> No
3.3	Were illicit discharge detection and elimination procedures implemented, enforced and documentation maintained?	<input checked="" type="checkbox"/> Yes <input type="checkbox"/> No

### 2.3.5. MCM #3 Evaluation (Part I.D.2.e)

Review the MCM to determine the MS4 Program's effectiveness and whether or not changes to the MS4 Program Plan are necessary:

Were all MCM #3 responses Yes or Not Applicable?

☐ Yes (Effective) ☒ No (Investigations and corrective actions ongoing and/or completed outside reporting year) Due to needed follow up monitoring, several of the reported discharge investigations are ongoing as of 6/30/2025. The Program Plan is still effective. The Town is updating its tracking and documentation procedures.

If any items are determined to be ineffective, describe changes necessary to the MS4 Program. Include the response in Section 1.5.

## 2.4. MCM #4: Construction Site Stormwater Runoff Control

### 2.4.1. Implementation of VESCP and Town Ordinance (Part I.E.4.a(1))

The MS4 has adopted a Virginia Erosion and Sediment Control Program (VESCP). The MS4 implements the VESCP consistent with the Virginia Erosion and Sediment Control Law and Virginia Erosion and Sediment Control Regulations.

Table 8: Project(s) Not in Conformance with VESCP and Town Ordinance
Project Name: NA
Explanation: NA

### 2.4.2. Site Stormwater Runoff Inspections (Part I.E.4.e(1))

Total number of inspections conducted:

The estimated number of site stormwater runoff inspections conducted for regulated land disturbance activities is 1405. The Town is in the middle of switching and implementing new inspection software. At this time this is a low estimate of the number of inspections we can support with inspection documentation. The Town did meet the minimum number of regulatory inspections on all permitted sites.

### 2.4.3. Enforcement Actions (Part I.E.4.e(2))

The total number and type of enforcement actions implemented:

The total number of enforcement actions implemented is 2.

The total number of Notices to Comply issued is 2.

The total number of Stop Work Orders issued is 0. There is one Stop Work Order still in effect from previous reporting years.

### 2.4.4. MCM #4 Evaluation (Part I.D.3.e)

Review the MCM to determine the MS4 Program's effectiveness and whether or not changes to the MS4 Program Plan are necessary:

Did the Town implement a VESCP consistent with the Virginia Erosion and Sediment Control Law and Virginia Erosion and Sediment Control Regulations?

☒ Yes (Effective) ☐ No (Ineffective)

If any items are determined to be ineffective, describe changes necessary to the MS4 Program. Include the response in Section 1.5.

## **2.5. MCM #5: Post-Construction Stormwater Management**

### **2.5.1. Implementation of VSMP and Town Ordinance (Part I.E.5.a(1))**

The MS4 has approved Virginia Stormwater Management Program (VSMP) and implements the VSMP consistent with the Virginia Stormwater Management Act and VSMP Regulations as well as has developed an inspection and maintenance program in accordance with Parts I.E.5.b and c.

#### **2.5.1.1. Privately-Owned VSMP Inspections (Part I.E.5.e (1)(a))**

The number of privately-owned stormwater management facility inspections conducted:

The number of privately-owned stormwater management facility inspections conducted is 55

#### **2.5.1.2. Privately-Owned VSMP Enforcement Actions (Part I.E.5.e (1)(b))**

The number of enforcement actions initiated by the permittee to ensure long-term maintenance of privately-owned stormwater management facilities including the type of enforcement action:

The number of enforcement actions initiated by the MS4 to ensure long-term maintenance of privately-owned stormwater management facilities is 0.

The type of enforcement actions issued are Not Applicable.

### **2.5.2. Stormwater Management Facility Inspections (Part I.E.5.e(2))**

Total number of inspections conducted on stormwater management facilities owned or operated by the permittee:

Were inspections conducted on stormwater management facilities during the reporting year? ☒ Yes ☐ No

The total number of inspections conducted on stormwater management facilities is 35..

### 2.5.3. Stormwater Management Facility Maintenance (Part I.E.5.e(3))

A description of significant maintenance, repair, or retrofit activities performed on the stormwater management facilities owned or operated by the permittee to ensure it continues to perform as designed. This does not include routine activities such as grass mowing or trash collection:

Were significant maintenance, repair, or retrofit activities performed on any stormwater management facilities during the reporting year?

☒ Yes ☐ No (Being assessed) ☐ Not Applicable (No maintenance required)

A description of significant maintenance, repair, or retrofit activities performed on the stormwater management facilities owned or operated by the MS4 to ensure it continues to perform as designed is provided in Table 9.

Table 9: Maintenance Activities Performed on Stormwater Management Facilities	
Stormwater Management Facility	Significant Maintenance Activity
Old Landfill	Repaired inlet and slope at inlet 7-5-2024
Rainbow St	Repaired inlet and installed rock 9-4-2024
Walters Dr.	Repaired banks and filled groundhog holes 9-5-2024
Cullen Ct	Removed sediment from inlet 9-6-2024

#### **2.5.4. Virginia Construction Stormwater General Permit Database (Part I.E.5.e(4))**

A confirmation statement that the permittee submitted stormwater management facility information through the Virginia Construction Stormwater General Permit database for those land disturbing activities for which the permittee was required to obtain coverage under the General VPDES Permit for Discharges of Stormwater from Construction Activities in accordance with Part III B 1 or a statement that the Permittee did not complete any projects requiring coverage under the General VPDES Permit for Discharges of Stormwater form Construction Activities:

Stormwater management facility information for stormwater facilities installed after July 1, 2014 was submitted through the Virginia Construction Stormwater General Permit database for land disturbing activities requiring a General VPDES Permit for Discharges of Stormwater from Construction Activities.

☒ Yes ☐ No (All stormwater management facility information for stormwater facilities installed during the reporting year was submitted through the Virginia Construction Stormwater General Permit database. Emma Danz of DEQ facilitated the submittal of the Town's previously missing information to the Virginia Construction Stormwater General Permit database. The response was that this counted as our submission, but that the actual time frame for updating the database was unknown.)

#### **2.5.5. DEQ BMP Warehouse (Part I.E.5.e(5) and (6))**

A confirmation statement that the permittee electronically reported new stormwater management facilities using the DEQ BMP Warehouse in accordance with Part III B 1 and the date on which the information was submitted:

No later than October 1 of each year, new BMPS implemented to meet a TMDL load reduction between July 1 and June 30 of each year were electronically reported using the DEQ BMP Warehouse for any practices not reported in accordance with Part III B 1 and 2 including stormwater management facilities from land disturbing activities less than one acre and for which a General VPDES Permit for Discharges of Stormwater from Construction Activities was not required?

☐ Yes, Date Submitted: NA ☐ No ☒ Not Applicable (The Town completed the stabilization of the Lomoor channel on 11/9/2022 with the intent of claiming a TMDL load reduction per the Sediment Action plan, however the load reduction calculations are not complete. See Table 1. No new BMPs qualified to be directly reported in the DEQ BMP Warehouse.)

A confirmation statement that the permittee electronically reported stormwater management facilities inspected using the DEQ BMP Warehouse in accordance with Part III B5.

As of the date of this report, the Town is continuing to discuss difficulties encountered while uploading information into the DEQ BMP Warehouse.

### 2.5.6. MS4 Program Plan BMP Measurable Goals

The MS4 Program Plan BMPs measurable goals are provided in Table 10.

Table 10: MS4 Program Plan BMP Measurable Goals for MCM #5		
BMP	Measurable Goal	Completeness Status
5.1	Was the inspection and maintenance program on post-construction stormwater management facilities owned and/or operated by the Town implemented?	<input checked="" type="checkbox"/> Yes <input type="checkbox"/> No
5.1	Was the inspection and maintenance program on privately owned post-construction stormwater management facilities implemented?	<input checked="" type="checkbox"/> Yes <input type="checkbox"/> No
5.1	Were all stormwater management facilities recorded with inspection and maintenance plans and/or agreements, where applicable?	<input checked="" type="checkbox"/> Yes <input type="checkbox"/> No
5.2	Was the BMP Warehouse updated with new BMPS?	<input type="checkbox"/> Yes <input type="checkbox"/> <input checked="" type="checkbox"/> Not Applicable (No new or discovered) <input type="checkbox"/> No
5.2	Were all inspections of stormwater management facilities reported to the BMP Warehouse?	<input type="checkbox"/> Yes <input checked="" type="checkbox"/> No

### 2.5.7. MCM #5 Evaluation (Part I.D.2.e)

Review the MCM to determine the MS4 program's effectiveness and whether or not changes to the MS4 Program Plan are necessary:

Were all MCM #5 responses Yes or Not Applicable?

☐ Yes (Effective) ☐ No (Ineffective) ☒ No (Plan still effective, see below)

The Town is currently discussing the BMP Warehouse upload with DEQ due to the Warehouse requiring a Pass/Fail Inspection Status to be assigned when including Most Recent Inspection Date on a BMP spreadsheet upload. Inspection Status is not required by the MS4 Permit.

If any items are determined to be ineffective, describe changes necessary to the MS4 Program. Include the response in Section 1.5.

## 2.6. MCM #6: Pollution Prevention and Good Housekeeping

### 2.6.1. Written Operational Procedures (Part I.E.6.y(1))

A summary of any written procedures developed or modified in accordance with Part I E 6 a and b during the reporting period:

Were any written procedures developed or modified in accordance with Part I E 6 a and b during the reporting period?

☐ Yes (Refer to Table 11) ☒ No ☐ Not Applicable (Not necessary)

Table 11: Good Housekeeping Operational Procedures Developed or Modified

NA

### 2.6.2. Newly Developed SWPPPs (Part I.E.6.y(2) and (3))

A summary of any new SWPPPs developed in accordance Part I.E.6.i during the reporting period:

All high-priority facilities were reviewed at the end of the reporting year to determine if SWPPP coverage was needed. Please see Table 1 for a facility that will need a SWPPP by Dec 31, 2025 due to changes on the site.

Were any new SWPPPs developed in accordance Part I E 6 i during the reporting period?

☐ Yes (Refer to Table 12) ☒ No

Table 12: New SWPPPs Developed

SWPPP Name	SWPPP Address

### 2.6.3. Modified or Delisted SWPPPs (Part I.E.6.y(4)and (5))

A summary of any SWPPPs modified in accordance with Part I.E.6.j,l,or m or the rationale of any high priority facilities delisted in accordance with Part I.E.6.l or m during the reporting period:

Were any new SWPPPs modified after an unauthorized discharge, release or spill reported?

☐ Yes (Refer to Table 13) ☐ No ☒ Not Applicable (No illicit discharges)

Were any high priority facilities delisted in accordance with Part I.E.6.l or m during the reporting period?

☐ Yes (Refer to Table 13) ☐ No ☒ Not Applicable (No delisted high priority facilities)

Table 13: SWPPPs Modified or Delisted	
SWPPPs Modified/Delisted	Rationale for Delisting

#### 2.6.4. Nutrient Management Plans Status (Part I.E.6.y(6))

Table 14: Status of Turf and Landscape Nutrient Management Plans	
Nutrient Management Plan Name	Status as of June 30, 2025
Harkrader Sports Complex	Approved
Kiwanis Park	Approved

#### 2.6.5. Training Events (Part I.E.6.y(7))

A list of the training events conducted in accordance with Part I.E.6.d, including the following information:

Was training conducted?

☐ Yes (Refer to Table 15) ☒ No ☐ Not Applicable (Not required this permit year)

If “Yes” is checked above, a list of training events conducted in accordance with Part I.E.6.d is provided in Table 15.

##### 2.6.5.1. Training Dates (Part I.E.6.y(7)(a))

The date of the training event:

If “Yes” is checked above, the date of the training event is provided in Table 15.

##### 2.6.5.2. Quantity Trained (Part I.E.6.q(5)(b))

The number of employees who attended the training event:

If “Yes” is checked above, the number of employees who attended the training event is provided in Table 15.

##### 2.6.5.3. Training Objective (Part I.E.6.q(5)(c))

The objective of the training event:

If “Yes” is checked above, the objective of the training event is provided in Table 15.

Table 15: Training Events		
Dates	# of Attendees	Training Objective

### 2.6.6. MS4 Program Plan BMP Measurable Goals

The MS4 Program Plan BMPs measurable goals are provided in Table 16.

Table 16: MS4 Program Plan BMP Measurable Goals for MCM #6		
BMP	Measurable Goal	Completeness Status
6.1	Was good housekeeping and pollution prevention biennial training conducted this reporting year?	<input type="checkbox"/> Yes <input type="checkbox"/> Not Applicable (Not required this reporting year.) <input checked="" type="checkbox"/> No
6.2	Were the annual comprehensive compliance evaluations conducted?	<input checked="" type="checkbox"/> Yes (These are done monthly) <input type="checkbox"/> No
6.2	Were the SWPPPs reviewed within 30 days after an unauthorized discharge, release or spill reported?	<input type="checkbox"/> Yes <input checked="" type="checkbox"/> Not Applicable (No illicit discharges at high priority facilities.) <input type="checkbox"/> No
6.2	Were the SWPPPs updated within 90 days after an unauthorized discharge?	<input type="checkbox"/> Yes <input checked="" type="checkbox"/> Not Applicable (No illicit discharges at high priority facilities.) <input type="checkbox"/> No
6.2	Were the MS4's properties reviewed this reporting year to determine if the properties meet the criteria of a high priority facility?	<input checked="" type="checkbox"/> Yes <input type="checkbox"/> No
6.3	Were the nutrient management plans implemented through completion of application records?	<input checked="" type="checkbox"/> Yes <input type="checkbox"/> Not Applicable (No fertilizer applied) <input type="checkbox"/> No

### 2.6.7. MCM #6 Evaluation (Part I.D.3.e)

Review the MCM to determine the MS4 Program's effectiveness and whether or not changes to the MS4 Program Plan are necessary:

Were all MCM #6 responses Yes or Not Applicable?

☐ Yes (Effective) ☒ No

If any items are determined to be ineffective, describe changes necessary to the MS4 Program. Include the response in Section 1.5.

### 3.0 TMDL SPECIAL CONDITIONS

#### 3.1. Crab Creek and Upper Roanoke River E.coli TMDL Action Plan

##### 3.1.1. Bacteria TMDL Implementation (Part II.B.11)

A summary of actions conducted to implement each local TMDL action plan:

A summary of actions conducted to implement each local TMDL action plan is provided in Table 17.

Table 17: Bacteria TMDL Action Plan Summary of Actions		
BMP	Measurable Goals	Completeness Status
1	Is education on special water quality concerns, specifically E.coli, addressed in the Town's Public Education and Outreach Plan?	<input checked="" type="checkbox"/> Yes <input type="checkbox"/> No
2	Were methodologies determined to assess the most effective structural and nonstructural best management practices to employ?	<input checked="" type="checkbox"/> Yes <input type="checkbox"/> No
3	Did employees receive IDDE training to enhance efforts to minimize illicit discharges?	<input checked="" type="checkbox"/> Yes <input type="checkbox"/> No
4	Did the Town create an IDDE and construction site issue complaint link on the Town website to enhance public IDDE reporting capabilities?	<input checked="" type="checkbox"/> Yes <input type="checkbox"/> No
5	Did the Town develop a long-term capital and operating program to offset capital funding and operating costs associated with structural BMP installation and maintenance?	<input checked="" type="checkbox"/> Yes <input type="checkbox"/> No
6	Are the legal authorities outlined in plan in place?	<input checked="" type="checkbox"/> Yes <input type="checkbox"/> No
7	Is the FOG Ordinance in place?	<input checked="" type="checkbox"/> Yes <input type="checkbox"/> No
8	Does the stormwater website contain FOG information?	<input type="checkbox"/> Yes <input checked="" type="checkbox"/> No (BMP revised in May 2020 revision.)
9	Was the pet waste disposal public education completed?	<input checked="" type="checkbox"/> Yes <input type="checkbox"/> No
10	Does the stormwater website contain IDDE reporting information?	<input checked="" type="checkbox"/> Yes <input type="checkbox"/> No
11	Was the Crab Creek Interceptor Study completed?	<input checked="" type="checkbox"/> Yes <input type="checkbox"/> No

12	Was the Watershed Treatment Model spreadsheet's pet waste component used to quantify bacterial reductions?	<input type="checkbox"/> Yes <input checked="" type="checkbox"/> No (removed in June 2025 revision)
13	Have the locations of pet waste stations in public parks been mapped?	<input type="checkbox"/> Yes <input checked="" type="checkbox"/> No (this is almost complete)
14	Have options for additional pet waste stations on public land been evaluated?	<input type="checkbox"/> Yes <input checked="" type="checkbox"/> No
15	Have educational materials or messaging been distributed at targeted public participation events?	<input checked="" type="checkbox"/> Yes (in 2019, 2022, 2023, 2024, 2025 at NRV Home Expo and 2022, 2023 Steppin' Out and 10/5/24 Christiansburg Farmers Market, dog waste collection bags were distributed.) <input type="checkbox"/> No
16	Has a mapped based approach been used to evaluate sanitary sewer overflows in the Wilson Creek watershed within Town limits?	<input type="checkbox"/> Yes <input checked="" type="checkbox"/> No
17	Has implementation of the Crab Creek Interceptor Study continued?	<input checked="" type="checkbox"/> Yes (see below) <input type="checkbox"/> No
18	Has coordination with the WWTF occurred to provide web-based educational information to reduce FOG sewerage system disposal?	<input type="checkbox"/> Yes <input checked="" type="checkbox"/> No
19	Has a procedure been created to quantify connections made to sanitary sewer from sites previously using a septic system?	<input type="checkbox"/> Yes <input checked="" type="checkbox"/> No

The following actions have been completed under the Crab Creek Interceptor Study:

- Phase I of College Street construction
- College Street Sanitary Sewer Evaluation Survey
- Phase I of Silver Lake Interceptor construction
- Arrowhead Sewershed Improvements are under construction.

Additionally, we have completed:

- Construction of Phase I and Phase II of Silverlake Interceptor is complete.
- Lomoor Channel Sewer Improvements in the Tower Sewershed were completed and we have seen improvements with a steep reduction in pump station overflows in the area
- Phase II Mill Lane portion of the College Street Basin was completed.

## 3.2. Crab Creek and Upper Roanoke River Sediment TMDL Action Plan

### 3.2.1. Sediment TMDL Implementation (Part II.B.11)

A summary of actions conducted to implement each local TMDL action plan: A summary of actions conducted to implement each local TMDL action plan is provided in Table 18.

Table 18: Sediment TMDL Action Plan Summary of Actions		
BMP	Measurable Goals	Completeness Status
1	Did the Town implement SWPPPs for the Town Public Works Station (Station B)?	<input checked="" type="checkbox"/> Yes <input type="checkbox"/> No
2	Did the Town implement SWPPPs for the historic Town landfill?	<input checked="" type="checkbox"/> Yes <input type="checkbox"/> No
3	Does the Town Code address Erosion and Sediment Control and Virginia Stormwater Management Program standards and permitting requirements?	<input checked="" type="checkbox"/> Yes <input type="checkbox"/> No
4	Were methodologies determined to assess the most effective structural and nonstructural best management practices to employ?	<input checked="" type="checkbox"/> Yes <input type="checkbox"/> No
5	Is education on special water quality concerns, specifically sediment, addressed in the Town's Public Education and Outreach Plan?	<input checked="" type="checkbox"/> Yes <input type="checkbox"/> No
6	Does the Town implement an ESC and VSMP Inspection and Enforcement Program for land disturbing activities?	<input checked="" type="checkbox"/> Yes <input type="checkbox"/> No
7	Does the Town implement a Post-construction Inspection and Maintenance Program for structural BMPs?	<input checked="" type="checkbox"/> Yes <input type="checkbox"/> No
6	Did the Town develop a long-term capital and operating program to offset capital funding and operating costs associated with structural BMP installation and maintenance?	<input checked="" type="checkbox"/> Yes <input type="checkbox"/> No
7	Does the Town provide Good Housekeeping and Pollution Prevention Training to employees?	<input checked="" type="checkbox"/> Yes <input type="checkbox"/> No
8	Did the Town create an IDDE and construction site issue complaint link on the Town website to enhance public IDDE reporting capabilities?	<input checked="" type="checkbox"/> Yes <input type="checkbox"/> No
9	Did the Town participate in the development of the Crab Creek and Roanoke River Implementation Plans?	<input checked="" type="checkbox"/> Yes <input type="checkbox"/> No

10	Were street sweeping measurable goals implemented?	<input checked="" type="checkbox"/> Yes, ongoing, see below <input type="checkbox"/> No
11	Is the Diamond Hills Phase I Project implemented?	<input checked="" type="checkbox"/> Yes <input type="checkbox"/> No
12	Is the Diamond Hills Phase II Project implemented?	<input type="checkbox"/> Yes <input checked="" type="checkbox"/> No (Removed BMP in May 2020 revision.)
13	Were neighboring MS4 coordination efforts implemented?	<input checked="" type="checkbox"/> Yes <input type="checkbox"/> No
14	Was the railroad coordination efforts for funding a stream restoration project implemented?	<input type="checkbox"/> Yes <input checked="" type="checkbox"/> No (BMP removed in May 2020 revision.)
15	Was the Watershed Treatment Model spreadsheet used to evaluate sediment reductions associated with public and private BMPs?	<input type="checkbox"/> Yes <input checked="" type="checkbox"/> No
16	Have sediment reduction calculations <i>as applicable to the MS4 waste load reduction</i> been confirmed for Diamond Hills, Blue Leaf and Towne Branch stream restorations?	<input checked="" type="checkbox"/> Yes <input type="checkbox"/> No
17	Has the Blue Leaf Stream Restoration sediment reduction credit been recertified?	<input type="checkbox"/> Yes <input checked="" type="checkbox"/> No (evaluation complete)
18	Have the Lomoor Channel and Christiansburg Industrial Park Detention Basin BMPs been installed?	<input checked="" type="checkbox"/> Yes <input type="checkbox"/> No
19	Has the Town submitted to the Department the anticipated end date by which the permittee will meet the WLA for sediment?	<input checked="" type="checkbox"/> Yes (included in 2025 Action Plan update) <input type="checkbox"/> No
20	Has the Town developed a targeted approach to inspecting privately owned stormwater management	<input type="checkbox"/> Yes <input checked="" type="checkbox"/> No

The following actions have occurred in reference to the Sediment Action Plan

- The Town contracted a study of possible ways to implement and quantify a targeted street sweeping/inlet cleaning program based on TMDL waste load allocations and the current Chesapeake Bay Program 2016 Street Sweeping Expert Panel Report in April 2021. Results obtained in July 2021. This information is under review.
- Lomoor Channel stabilization was completed in October 2022.
- Christiansburg Industrial Park Basin and Stream Restoration was at substantial completion in Spring 2025.
- Blue Leaf Stream Restoration sediment reduction credit recertification has been delayed pending maintenance needs detailed in the recertification inspection. The scope of work for the repairs is now included in the design contract for the upstream extension of the restoration.
- Sediment reduction calculations for Diamond Hills, Blue Leaf, and Towne Branch stream restorations are complete. The Town is applying all reduction credits to the required load reductions as long as the restorations pass the recertification inspections.
- Town Branch Stream Restoration passed its 5 year recertification inspection.
- The Town confirmed in the 2025 update of the Sediment Action plan that the Towne Branch Stream Restoration met the entirety of the Town's sediment reduction for Crab Creek, and the Christiansburg Industrial Park Stream Restoration meets the entirety of the the Town's sediment reduction for the Roanoke River.

A summary of other quantifiable pollutant of concern reductions is provided in Table 19.

Table 19: 2024-2025 POC Reductions	
<b>BMP #10: Street Sweeping – Crab Creek</b>	
Estimated tons of material swept	16.17
<b>BMP #10: Street Sweeping – Roanoke River</b>	
Estimated tons of material swept	2.1

### 3.3. Roanoke River PCB TMDL Action Plan

#### 3.3.1. PCB TMDL Implementation (Part II.B.11)

A summary of actions conducted to implement each local TMDL action plan:

A summary of actions conducted to implement each local TMDL action plan is provided in Table 20.

Table 20: PCB TMDL Action Plan Summary of Actions		
BMP	Measurable Goal	Completeness Status
1	Was an evaluation on the substitution or addition of education on PCB sources and elimination as a high-priority water quality issue completed?	<input checked="" type="checkbox"/> Yes <input type="checkbox"/> No
2	Was information included about PCB as a Pollutant of Concern in annual mailers that are attached to the annual drinking water quality information?	<input type="checkbox"/> Yes <input type="checkbox"/> No <input checked="" type="checkbox"/> N/A (Mailers are no longer distributed.)
3	Did the Town participate in the New River TAC to advocate for consistent TMDL requirements across all town watersheds?	<input checked="" type="checkbox"/> Yes <input type="checkbox"/> No
4	Did coordination occur with the town Public Works Wastewater Treatment Plant (WWTP) to gather information on potential PCB sources through the WWTP Industrial Waste Surveys?	<input checked="" type="checkbox"/> Yes <input type="checkbox"/> No
5	Was IDDE ordinance language researched at other localities for specific PCB prohibition?	<input checked="" type="checkbox"/> Yes <input type="checkbox"/> No
6	Was existing PCB-free purchasing ordinance language surveyed at other localities and evaluated for the potential to add such language to Town Code?	<input checked="" type="checkbox"/> Yes <input type="checkbox"/> No
7	Were methods examined to determine historical land uses to identify potential legacy sources of PCBs?	<input type="checkbox"/> Yes <input checked="" type="checkbox"/> No (Removed BMP in May 2020 revision.)
8	Was the Montgomery Regional Solid Waste Authority (MRSWA) contacted regarding disposal of PCB products and the potential for partnership?	<input checked="" type="checkbox"/> Yes <input type="checkbox"/> No
9	Was the Good Housekeeping SWPPP materials reviewed for potential revisions to more specifically address PCBs as a pollutant of concern?	<input checked="" type="checkbox"/> Yes <input type="checkbox"/> No

10	Were the properties identified in the 2016 Action Plan as needing to be investigated for significant sources of the Pollutant of Concern investigated?	<input type="checkbox"/> Yes <input checked="" type="checkbox"/> No
11	Were PCBs added to the staff Good Housekeeping/IDDE training?	<input checked="" type="checkbox"/> Yes <input type="checkbox"/> No
12	Was the Montgomery Regional Solid Waste Authority contacted for updates to their Household Hazardous Waste collection and outreach efforts?	<input checked="" type="checkbox"/> Yes (These events are now usually listed on the FAQ page for the Town's Fall and Spring clean up.) <input type="checkbox"/> No
13	Was an outreach effort beyond that detailed in the MS4 program plan initiated?	<input type="checkbox"/> Yes <input checked="" type="checkbox"/> No

## Appendix A: Documentation of Public Education and Outreach Activities



THE PLACE TO BE.  
CHRISTIANSBURG VA

# DRINKING WATER QUALITY REPORT



2024

christiansburg.org



TABLE OF CONTENTS

A Note from the Town Manager ..... 1

Treatment Plant Information ..... 2

About Your Water ..... 3

Health Information ..... 4

Sampling Results ..... 5

Public Stewardship ..... 7

A NOTE FROM THE TOWN MANAGER

Every year, our water systems undergo extensive testing to ensure our drinking water is safe. The results of these tests, performed during the 2024 calendar year, demonstrate that our drinking water is safe and meets all federal and state requirements.

It is important to me that residents are fully informed about the quality of their drinking water. This report covers test results, general information about the drinking water and drinking water treatment plant, and additional resources the public may find useful.

If you have further questions, please contact the Town's Engineering Director Mike Kelley at 540-382-6120.

Sincerely,



Randy Wingfield  
Town Manager

TREATMENT PLANT INFORMATION



Above: Residents tour the sedimentation basins at the NRV Regional Water Authority's treatment plant.

The NRV Regional Water Authority (NRVRWA) owns and operates a water treatment plant capable of processing 12.4 million gallons per day, as well as two raw water pump stations located near the New River. The NRVRWA is a bulk supplier and provides finished water to the Town of Blacksburg, Town of Christiansburg, Virginia Tech and Montgomery County. This means the NRVRWA serves an estimated population of approximately 102,000.

The original raw water intake and water treatment plant were constructed in 1957 with a capacity of 4.1 million gallons per day. In 1968, the water treatment plant capacity was expanded to 10 million gallons per day, and a raw water booster pump station was also constructed. In 1977, the water treatment plant capacity was again expanded to its current capacity of 12.4 million gallons per day, and a new raw water intake was added. Minimal upgrades and improvements have taken place since 1977, with the majority of work being routine maintenance and replacement.

The NRVRWA completed a comprehensive evaluation of its existing raw water pumping facilities and the water treatment plant in 2016. The evaluation concluded that the facilities required a number of upgrades to maintain a safe work environment, improve efficiency and continue providing high quality water to customers. The raw water pumping facilities and water treatment plant began major renovations in 2020. This construction was completed in 2024. These renovations are allowing the Authority to continue to provide high quality water to its customers for years to come.

The NRVRWA has completed two projects that expanded service to its members. These projects provide redundant feeds to members, so in the event of a malfunction or failure of critical infrastructure, there are alternate routes and systems to deliver water to NRVRWA members.

# ABOUT YOUR WATER

Christiansburg is a member of the NRV Regional Water Authority (NRVRA), which provides the Town of Christiansburg with drinking water sourced from the New River. The NRVRA treats surface water sedimentation, filtration and, finally, disinfection. The water is pumped from the treatment system through a network of pipes to storage tanks, where it is then distributed to your tap. The Town of Christiansburg operates and maintains four pump stations, four water storage tanks and 150 miles of water main lines. On average, the Town delivers over 1.6 million gallons of drinking water to residences and businesses each day.

In order to ensure that tap water is safe to drink, the Environmental Protection Agency (EPA) prescribes regulations that limit the amount of certain contaminants in water provided by public systems. Food and Drug Administration regulations establish limits for contaminants in bottled water, which must provide the same protection for public health. The sources of drinking water (both tap water and bottled water) include rivers, lakes, streams, ponds, reservoirs, springs and wells.

Drinking water, including bottled drinking water, may reasonably be expected to contain at least small amounts of some contaminants. The presence of contaminants does not necessarily indicate that the water poses a health risk. More information about contaminants and potential health effects can be obtained by calling the EPA's Safe Drinking Water Hotline at 800-426-4791.

## Possible contaminants include:

- **Microbial Contaminants,** such as viruses and bacteria, which may come from sewage treatment plants, septic systems, agricultural livestock operations or wildlife.
- **Inorganic Contaminants,** such as salts and metals, which can be naturally occurring or result from urban stormwater runoff, industrial or domestic wastewater discharges, oil and gas production, mining or farming.
- **Pesticides and Herbicides,** which may come from a variety of sources such as agriculture, urban stormwater runoff and residential uses.
- **Organic Chemical Contaminants,** including synthetic and volatile organic chemicals, which are byproducts of industrial processes and petroleum production, and can also come from gas stations, urban runoff, and septic systems.
- **Radioactive Contaminants,** which can be naturally occurring, or the result of oil and gas production and mining activities.

# HEALTH INFORMATION

## Vulnerability to Contaminants

As water travels over the surface of the land or through the ground, it dissolves naturally occurring and, in some cases, radioactive material, and can pick up substances resulting from the presence of human activity. Some people may be more vulnerable to contaminants in drinking water than the general population. Immunocompromised persons, such as persons with cancer undergoing chemotherapy, persons who have organ transplants, people with HIV/AIDS or other immune system disorders, the elderly and infants can be at risk for infections. These people should seek advice about drinking water from their healthcare provider.

A source water assessment was conducted in 2020 that determined the New River to be highly susceptible to contamination. This is common of other water systems in Virginia when the source is from surface waters from this report may be obtained through the NRVRA ([www.nrvwater.org](http://www.nrvwater.org)).

## Additional Health Information

If present, elevated levels of lead can cause serious health problems, especially for pregnant women and children. Lead in drinking water is primarily from materials and components associated with service line plumbing. The Town of Christiansburg is responsible for providing high quality drinking water, but cannot control the variety of materials used in plumbing components. When your water has been sitting for several hours, the potential for lead exposure by flushing your tap for 30 seconds to two minutes before drinking or cooking. If you are concerned about lead in your water, you may wish to have your water tested for lead. For more information on testing methods, and steps you can take to minimize exposure from the Safe Drinking Water Hotline (800-426-4791). You can also use a filter certified by an American Standards Institute accredited certifier to reduce lead in drinking water. If you are concerned about lead and wish to have your water tested, contact our Public Works Department at 540-382-1151, ext. 6009 or call 1-800-426-4791. For more information on testing methods, and steps you can take to minimize exposure to lead in drinking water, testing methods, and steps you can take to minimize exposure to lead in drinking water, visit [epa.gov/safewater/lead](http://epa.gov/safewater/lead).

### Health Effects Information

Exposure to lead in drinking water can cause serious health effects in all age groups. Infants and children are most vulnerable to lead exposure. Lead exposure can lead to new learning and behavior problems, decreases in IQ and attention span. The children of women who are exposed to lead before or during pregnancy can have increased risk of these adverse health effects. Adults can have increased risks of heart disease, high blood pressure, kidney or nervous system problems.

## Service Line Inventory

The Town of Christiansburg completed the required Lead Service Line Inventory and submitted it to the Virginia Department of Health Office of Drinking Water. Based on customer self-identification, historical data, and field investigation, we have determined that there are 11,143 non-lead service lines in the system, 1,143 lead service lines, and 0 unknown materials in the system. We thank you for your cooperation. If you are interested learning more about the Service Line Discovery Program, visit [www.christiansburgva.org/servicelinediscovery](http://www.christiansburgva.org/servicelinediscovery).



## SAMPLING RESULTS

The NRV Regional Water Authority and the Town of Christiansburg routinely monitor contaminants in your drinking water according to federal and state laws. The tables below list all of the drinking water contaminants that are applicable for the calendar year of this report.

The presence of contaminants in the water does not necessarily indicate that the water poses a health risk. Unless otherwise noted, the data presented in this table is from testing done in the calendar year of the report. The EPA or the state requires us to monitor for certain contaminants less than once per year because the concentrations of these contaminants do not change.

### Regulated Contaminants\*

Contaminants (units)	MCLG or MCLG <sup>1</sup> MRL <sup>2</sup>	MCL or MRL <sup>2</sup>	Level Detected	Range (lowest <sup>3</sup> - highest)	Violation	Typical Sources
Nitrite and Nitrate <sup>1</sup> (ppm)	10	10	2.4	N/A	No	Runoff from fertilizer use; leaching from septic tanks and sewage; erosion of natural deposits
Halooacetic acids [HHA5] (ppm)	N/A	60	37	24-47	No	Byproduct of drinking water disinfection
Total Trihalomethanes [THM] (ppm)	N/A	80	44	15-60	No	Byproduct of drinking water disinfection
Total organic carbon (removal ratio)	N/A	TT in compliance if ≥ 1.0	1.42	1.00-2.22	No	Naturally present in the environment
Barium <sup>2</sup> (ppm)	2	2	0.020	N/A	No	Discharge of drilling wastes; discharge from metal refineries; erosion of natural deposits
Chlorine (ppm)	4	4	3.9	1.1-3.9	No	Water additive to control microbes
Turbidity (NTU) <sup>3</sup>	N/A	TT, 1 NTU 0.3 (95% of the time)	24.43 NTU, 96.57%	0.035-24.43	No	Soil runoff
Fluoride <sup>4</sup> (ppm)	4	4	0.73	N/A	No	Erosion of natural deposits; discharge from fertilizer and aluminum factories
Alpha Emitters (pCi/L)	0	15	0.04	N/A	No	Erosion of natural deposits
Combined Radium (pCi/L)	0	5	0.04	N/A	No	Erosion of natural deposits

<sup>1</sup>These tables only show those contaminants that were detected in the water.

<sup>2</sup>Infants below the age of six months who drink water containing nitrate in excess of the MCL could become seriously ill and if untreated, may die. Symptoms include shortness of breath and blue-baby syndrome.

<sup>3</sup>Turbidity is a measure of the cloudiness of water. We monitor it because it is a good indicator of the effectiveness of our filtration system. The EPA requires that we report the highest single turbidity result measured during the year.

<sup>4</sup>Some people who drink water containing fluoride in excess of the MCL over many years could get bone disease, including pain and tenderness of the bones. Children may get mottled teeth.

### Lead & Copper Contaminants\*

Contaminants (units)	MCLG	Action Level	Amount Detected <sup>1</sup> (ppm) <sup>2</sup> Percentile	Range (lowest <sup>3</sup> - highest)	Sample Date	Violation	Sites above action level	Typical sources
Copper (mg/L)	1.3	1.3	0.057	<0.020 - 0.072	Sept. 2023	No	0	Corrosion of household plumbing systems; erosion of natural deposits; leaching from wood preservatives
Lead <sup>4</sup> (ppb)	0	15	<2 <sup>5</sup>	all samples <2 <sup>5</sup>	Sept. 2023	No	0	Corrosion of household plumbing systems; erosion of natural deposits

<sup>1</sup>These tables only show those contaminants that were detected in the water.

<sup>2</sup>The Town of Christiansburg participates in lead and copper monitoring every three years with the Town of Blacksburg and BelView distribution systems.

<sup>3</sup>The 90<sup>th</sup> percentile was below the detection limit of 2 ppb.

5

## SAMPLING RESULTS CONT.

### Unregulated Contaminants\*

Sodium is an essential element required for normal body function, including nerve impulse transmission, fluid regulations and muscle contraction and relaxation. However, in excess amounts, sodium increases individual risk of hypertension, heart disease and stroke. One of the chief sources of sodium is the consumption of salt; therefore, salt restrictions are often recommended as a first line of treatment for individuals suffering from these conditions.

Contaminant (unit)	Level Detected	Sample Date	Typical Sources
Sodium <sup>1</sup>	13.7 mg/L	Jan. 2024	Naturally occurring; Addition of treatment chemicals/processes

These tables only show those contaminants that were detected in the water.

<sup>1</sup> For individuals on a very low sodium diet (500 mg/day), EPA recommends not to drink water that exceeds 20 mg/L. Should you have a health concern, contact your healthcare provider.

### Definitions

The following definitions may assist in understanding the results tables.

- **Maximum Contaminant Level Goal (MCLG)** is the level of a contaminant in drinking water below which there is no known or expected risk to health. MCLGs allow for a margin of safety.
- **Maximum Contaminant Level (MCL)** is the highest level of a contaminant that is allowed in drinking water. MCLs are set as close to the MCLGs as feasible using the best available treatment technology.
- **Maximum Residual Disinfectant Level Goal (MRDLG)** is the level of a drinking water disinfectant below which there is no known or expected risk to health. MRDLGs do not reflect the benefits of the use of disinfectants to control microbial contaminants.
- **Maximum Residual Disinfectant Level (MRDL)** is the highest level of a disinfectant allowed in drinking water. There is convincing evidence that addition of a disinfectant is necessary for control of microbial contaminants.
- **Treatment Technique (TT)** is a required process intended to reduce the level of a contaminant in drinking water.
- **Violation** means that the level of a contaminant or disinfectant in your drinking water has exceeded the maximum level allowed by the EPA.
- **Action Level** means the concentration of a contaminant that, if exceeded, triggers treatment or other requirements that an owner shall follow.

- **PPB (parts per billion)** means one part substance per billion parts water (or milligrams per liter).
- **PPM (parts per million)** means one part substance per million parts water (or milligrams per liter).
- **Picocuries per liter (pCi/L)** picocuries per liter is a measure of the radioactivity in water.
- **Nephelometric Turbidity Unit (NTU)** nephelometric turbidity unit is a measure of the clarity, or cloudiness, of water. Turbidity in excess of 5 NTU is just noticeable to the average person. Turbidity is monitored because it is a good indicator of the effectiveness of our filtration system.

6

### Additional Resources

- **Attend an NRV Regional Water Authority meeting.** Community members are welcome to attend NRV/RWA meetings, which are held at 3 p.m. every third Wednesday of the month. Please contact Caleb Taylor at 540-639-2575 to participate in a meeting.
- **Take a tour of the water treatment plant.** To schedule a tour, please contact Executive Director Caleb Taylor at 540-639-2575.
- **Dispose of household hazardous waste.** Please dispose of these items at one of the New River Resource Authority's Household Hazardous Waste Collection events. Learn more by calling 540-674-1677 or visiting [www.newriverresourceauthority.org](http://www.newriverresourceauthority.org).
- **Learn more.** If you have questions about this report, please contact the Engineering Department at 540-382-6120. For more information about water in the New River Valley, please visit [www.nrwater.org](http://www.nrwater.org).  
The EPA ([www.epa.gov/Your-Drinking-Water](http://www.epa.gov/Your-Drinking-Water)) and the Centers for Disease Control and Prevention ([www.cdc.gov/healthywater/drinking](http://www.cdc.gov/healthywater/drinking)) websites offer a substantial amount of information on many issues related to water resources, water conservation and public health.
- The Virginia Health Department's Office of Drinking Water ([www.vdh.virginia.gov/ODW](http://www.vdh.virginia.gov/ODW)) provides current information on water issues in Virginia, including valuable information about our watershed.



## PUBLIC STEWARDSHIP

The NRV Regional Water Authority and the Town of Christiansburg work to provide quality water to every home. We ask all of our customers to help us protect our water sources, which are the heart of our community, our way of life and our children's future.

Source water protection prevents contamination of a public water supply by effectively managing potential contaminant sources in the area that contribute water to the surface water supply. This area encompasses the watershed and is called the Source Water Protection Area (SWPA).

The watershed is an area of land that drains to a specific water body. Rainfall, snowmelt and stormwater runoff all drain into the watershed. This runoff has the potential to pick up contaminants along the way and deposit them in source water.

In Christiansburg, almost all watersheds drain to streams classified as impaired due to excess sediment, E. coli bacteria and polychlorinated biphenyls (PCBs). Remember, all storm drain inlets and roadside ditches drain to our creeks and rivers. Preventing soil erosion off your property, as well as picking up and properly disposing of pet waste, can reduce the excess sediment and E. coli bacteria flowing through our storm drain system to our streams.

It is important we each do our part to keep our watersheds clean. Please dispose of pesticides, oils, electronics, home improvement and other hazardous wastes properly to avoid contaminating our drinking water. The New River Resource Authority has free Household Hazardous Waste Collection (see p. 6 for more information). Disposing of your waste responsibly does not take a lot of effort, but it makes a huge difference for the environment!

# The Christiansburg Connection

Newsletter for the Town of Christiansburg

March/April 2025



## NEW ONLINE SYSTEM TO OBTAIN PERMITS BEGINNING SPRING OF 2025

The Town of Christiansburg is excited to announce a new online system to obtain permits, beginning in Spring of 2025. This system will provide streamlined access to the Town's Building, Engineering, and Planning Departments and will be available through our website, [www.christiansburg.org](http://www.christiansburg.org). The new system will allow the public faster access to what permits they need, when they are needed. Once the transition is complete, citizens will be able to easily apply for permits, submit applications, pay invoices and request inspections.

As we approach the launch date, more information and instructions will be provided. Please continue to check our website and social media for updates.

## AQUATIC CENTER UPDATES

### SWIM MEETS

**March 26-30**

USA Swimming Eastern Zone Sectionals

**April 5**

Fitter Faster Swim Clinic hosted by Virginia Swimming

\*Please visit [cacpool.com](http://cacpool.com) for facility hours\*

The Aquatic Center and Recreation Center will be closed Sunday, April 20 in observance of Easter.



Want to stay in the know?

Sign up for our Notify Me and Citizen Alert systems to receive Town info via phone, text or email.  
Notify Me: [www.christiansburg.org/notifyme](http://www.christiansburg.org/notifyme)  
Citizens Alert: [www.christiansburg.org/alerts](http://www.christiansburg.org/alerts)



THE PLACE TO BE.  
**CHRISTIANSBURG VA**

Have a question? Let us know!  
540-382-6128, ext. 1151  
[info@christiansburg.org](mailto:info@christiansburg.org)  
[www.christiansburg.org](http://www.christiansburg.org)

## SPRING EVENTS CALENDAR

### Diamond Hills Stream Cleanup Saturday, April 5

10 a.m. - Noon

Volunteers meet at Independence Blvd. between Sleepy Hollow Rd. & Gold Leaf Dr.

### Spring Kickoff Festival Saturday, April 5

6-9 p.m. at the Christiansburg Recreation Center (outside)

Join the party at the Spring Kickoff Festival! Featuring live music, a bonfire, games, and many other activities. Local food trucks will be on hand to satisfy your food and beverage cravings. All activities and games are FREE!

### Egg-streme Easter Egg Party Saturday, April 11

(Ages 18 and up)

Games and activities start at 7 p.m. at Christiansburg Huckleberry Park  
Egg hunt begins at 8:15 p.m.

Easter egg hunts aren't just for kids anymore! Grab a few friends and hunt Easter eggs in the dark to win big prizes! We ask that each participant bring a canned food item to be donated to a local food pantry. Please wear athletic clothing and shoes.

### The Great Easter Egg Hunt Saturday, April 19

(Ages 12 and under)

Beginning at 10 a.m. at Kiwanis Park

Visit [christiansburg.org/parksandrecreation](http://christiansburg.org/parksandrecreation) for age group times

Children are divided into age groups to search for surprises the Easter Bunny has left behind! Please have each child participating bring their own baskets. The Easter Bunny will also stop by to take photos!

### Shred-A-Thon Tuesday, April 22

3-6 p.m. at Christiansburg Huckleberry Park

### Rockin' Main Street Concert Saturday, May 10

5-9 p.m. on W. Main Street in Christiansburg

Musical performances by: Noah Spencer and The Jared Stout Band

Please note: E. Main St. will be open and accessible between N. Franklin St. and Roanoke St.

# The Christiansburg Connection

Newsletter for the Town of Christiansburg

March/April 2025

## SPRING CLEANUP: APRIL 14-25



In April and October of each year, the Town offers residents a free special collection period for larger items, making cleanup easy and convenient.

To help our crews, please place your cleanup items within 10 feet of the street and separate them from your regular trash. Be sure not to block any ditches, gutters, sidewalks, water meters, or sewer cleanouts. The Town is not responsible for items left at or near the street that weren't intended for collection. Piles that don't follow cleanup guidelines will not be picked up. Also, remember to separate materials by type—bagged leaves, tree limbs, and trimmings should be kept separate. Loose items should be placed in bags or containers no larger than 32 gallons. Leaves must be bagged. For a full list of accepted items, visit [www.christiansburg.org/cleanupFAQ](http://www.christiansburg.org/cleanupFAQ).

While the special collection trucks follow the regular garbage routes, cleanup may be delayed by a day or two, depending on the volume. If your items haven't been collected by the end of the cycle, please call 540-382-1151.

Throughout the year, residents may also set out their brush for complimentary monthly collection. Please visit [www.christiansburg.org/brush](http://www.christiansburg.org/brush) to learn more. Please note, brush collection **will not** run in April as it is part of Spring Cleanup.

## HAZARDOUS WASTE & PCB AWARENESS



As you prepare for the Spring Clean Up, remember that common household items like stains, varnishes, cleaners, adhesives, oils, and pesticides are hazardous waste. Check the labels for words like "poison," "danger," "warning," or "caution." Never dispose of these items in your trash or recycling.

Additionally, if the materials were manufactured prior to 1980, they may also contain PCBs. PCBs, or polychlorinated biphenyls, were commonly found in transformers and capacitors, fluorescent light ballasts, oils in motor and hydraulic systems, and other materials.

PCBs may be released from these materials as they degrade or break, and travel through runoff into storm sewers, streams, and rivers. Due to this pollution, our local rivers have fish consumption advisories. Learn more about these advisories at <https://tinyurl.com/VAFishConsumptionAdvisory>. The Roanoke and New River PCB studies are posted at <https://www.christiansburg.org/250/Stormwater-Information-and-Education>

The Montgomery Regional Solid Waste Authority is hosting a Household Hazardous Waste event on **April 19, 2025, from 9am - 2 pm**. Please call 540-381-2820 for an appointment and visit <https://mrswa.com> for more information.

## LAUNCH CHRISTIANSBURG

### NOW ACCEPTING 2025 SPONSORS

The Town is now accepting sponsors for the 2025 Launch Christiansburg program!

Launch Christiansburg is an educational program focused on helping current and prospective Christiansburg businesses thrive. At the end of the program, participants will deliver a business pitch with the opportunity to be awarded up to \$5,000 in business investment grants.

If you're interested in learning more about the program and sponsorship opportunities, please contact Small Business Solutions Manager, Miles Campbell at [mcampbell@christiansburg.org](mailto:mcampbell@christiansburg.org).

A big thank you to our 2024 sponsors for helping to make our first Launch Christiansburg program a success!



- Carter Bank and Trust
- Ignite Leadership + HR Consulting Group
- Inorganic Ventures
- Kiwanis Club of Christiansburg
- Montgomery County Chamber of Commerce

## REMINDER: PROPER CART PLACEMENT & REMOVAL



Did you know that the Town has codes in place to ensure recycling and solid waste carts are placed and removed correctly? Here's a reminder to help keep our community clean and organized.

To ensure proper collection, garbage and recycling carts should be placed curbside by no later than 8 a.m. on your assigned collection day. Carts placed after this time may not be collected. They should be positioned either in the street with the wheels against the curb (preferred), at the end of your driveway, or on the curb/yard adjacent to the street.

All carts—whether Town-issued or from a private contractor—must be removed from the curb by 8 p.m. on your collection day. The ideal storage location for your cart is indoors, such as in a garage or shed. However, it can also be stored outdoors, at the side or rear of your home.

**Please note:** Carts left on the street after collection day may be confiscated by the Town.

For more information, visit [christiansburg.org/solidwaste](http://christiansburg.org/solidwaste) or call 540-382-1151.

Want to stay in the know?

Sign up for our Notify Me and Citizen Alert systems to receive Town info via phone, text or email.  
Notify Me: [www.christiansburg.org/notifyme](http://www.christiansburg.org/notifyme)  
Citizens Alert: [www.christiansburg.org/alerts](http://www.christiansburg.org/alerts)



THE PLACE TO BE.  
**CHRISTIANSBURG VA**

Have a question? Let us know!  
540-382-6128, ext. 1151  
[info@christiansburg.org](mailto:info@christiansburg.org)  
[www.christiansburg.org](http://www.christiansburg.org)

# The Christiansburg Connection

Newsletter for the Town of Christiansburg

November/December 2024



## HOLIDAY EVENTS

### LIGHT UP YOUR HOME FOR THE HOLIDAYS - Deadline: Dec. 9

Submit your home decorations to [www.christiansburg.org/parksandrecreation](http://www.christiansburg.org/parksandrecreation) by Monday, Dec. 9 at 5 p.m. The top 10 homes will be placed on the Town's Facebook page for voting. Voting will begin on Wednesday, December 18 and run until 9 a.m. on Friday, December 20.

### CHRISTMAS ON MAIN - Dec. 13 5-8 p.m. in Downtown Christiansburg

#### MARKET

5-8 p.m. on Hickok St.

#### TREE LIGHTING

6:50 p.m. at Town Square

#### PARADE

7 p.m. on Main St.

### SANTA'S COMING TO TOWN Dec. 16-20 from 6-9 p.m.

Santa is visiting Christiansburg neighborhoods on a fire truck! Maps showing the routes for each night are coming soon.

### NEW YEARS SPLASH - Dec. 30 5:30-8 p.m. at the Aquatic Center

More information will be available at [cacpool.com](http://cacpool.com) on Dec. 3.



Want to stay in the know?

Sign up for our Notify Me and Citizen Alert systems

to receive Town info via phone, text or email.

Notify Me: [www.christiansburg.org/notifyme](http://www.christiansburg.org/notifyme)

Citizen Alert: [www.christiansburg.org/alerts](http://www.christiansburg.org/alerts)

## DIAMOND HILLS STREAM RESTORATION CELEBRATES 10 YEARS!



Join the Town on Dec. 7 from 10 a.m. to Noon as we celebrate ten years of stream clean-up/restoration at Diamond Hills! This event will feature a guided stream walk, where you can learn the history and ecology of this 14-acre stream and wetland complex, as well as a stream clean-up. Volunteers will meet at Independence Blvd. between Sleepy Hollow Rd. and Gold Leaf Dr. Parking will be available on Independence Blvd. or Sleepy Hollow Rd. The Town will provide bags, gloves and drinking water to volunteers.

Stream restorations do wonders for our waterways by preventing erosion and slowing down stormwater runoff. They also provide great benefits such as helping to cool the air, absorbing urban noise and creating inviting spaces for relaxation and play. These restorations also trap trash, making cleanup much easier in smaller streams than in larger rivers. With such impressive long-term benefits, the Town is excited to announce that we broke ground on our **FOURTH** stream restoration project this year!



## VETERANS RESOURCE FAIR

Wednesday, Nov. 6  
Christiansburg Recreation Center  
9 a.m. - Noon & 4-6 p.m.

The Veteran's Resource Fair can help connect Veterans and Active members to benefits and resources in their community, as well as promote a network of services to Veterans in the New River Valley.

Door prizes and light refreshments will be available.

### LOOSE LEAF COLLECTION

Loose leaf collection will run weekdays from Nov. 4 to Dec. 31, weather permitting. Public Works crews will only collect piles of loose leaves; leaves placed in bags will **not** be accepted. Please do not place your pile of loose leaves in a way that blocks sidewalks, sanitary sewers, solid waste carts, drainage ditches or utility meter boxes.

### TREE COLLECTION

Christmas tree collection will run weekdays from Jan. 6-17, 2025. Please leave your tree at the curb for collection.



THE PLACE TO BE.  
**CHRISTIANSBURG VA**

Have a question? Let us know!  
540-382-6128, ext. 1151  
[info@christiansburg.org](mailto:info@christiansburg.org)  
[www.christiansburg.org](http://www.christiansburg.org)

# The Christiansburg Connection

Newsletter for the Town of Christiansburg

November/December 2024

## UPCOMING HOLIDAY HOURS & CLOSURES

### ELECTION DAY, NOV. 5

Town Hall will be closed on Tuesday, Nov. 5.

The Aquatic Center and Recreation Center will be open, but administrative offices will be closed.

Solid waste and recycling normally collected on Tuesdays will be collected on Wednesday, Nov. 6, with Wednesday's regular collection.

### VETERANS DAY, NOV. 11

Town Hall and the Aquatic Center will be closed on Monday, Nov. 11.

The Recreation Center will be open, but administrative offices will be closed.

Solid waste and recycling normally collected on Mondays will be collected on Tuesday, Nov. 12, with Tuesday's regular collection.

### THANKSGIVING, NOV. 27-29

Town Hall will be closed Wednesday, Nov. 27, through Friday, Nov. 29.

The Aquatic and Recreation Centers will be open on Wednesday, Nov. 27, but administrative offices will be closed. Both facilities will be closed Thursday, Nov. 28, and Friday, Nov. 29.

Solid waste normally scheduled for Wednesday, Nov. 27, will be collected Monday, Nov. 25, along with Monday's regular collection.

Solid waste and recycling normally scheduled for Thursday, Nov. 28, will be collected Tuesday, Nov. 26, along with Tuesday's regular collection.

Solid waste and recycling normally scheduled for Friday, Nov. 29, will be collected Monday, Dec. 2, along with Monday's regular collection.

### CHRISTMAS (OBSERVED), DEC. 24-25

Town Hall and the Aquatic Center will be closed on Tuesday, Dec. 24 and Wednesday, Dec. 25.

The Recreation Center will be open on Tuesday, Dec. 24, but administrative offices will be closed. The Recreation Center will be closed Wednesday, Dec. 25.

Solid waste and recycling normally scheduled for Tuesday, Dec. 24, will be collected Monday, Dec. 23, along with Monday's regular collection.

Solid waste and recycling normally scheduled for Wednesday, Dec. 25, will be collected Thursday, Dec. 26 along with Thursday's regular collection.

### NEW YEARS DAY, JAN. 1

Town Hall, the Aquatic Center and the Recreation Center will be closed on Wednesday, January 1.

Solid waste and recycling normally scheduled for Wednesday, Jan. 1, will be collected Thursday, Jan. 2, along with Thursday's regular collection.

## UPCOMING COUNCIL MEETINGS\*

**November 12 at 7 p.m.**

**December 10 at 7 p.m.**

*Due to the upcoming holidays, cancellations and/or adjustments have been made to the November and December Town Council meeting dates.*

\*Meetings are held in Council Chambers at Town Hall. To adhere to social distancing guidelines, residents may be asked to wait in the hall or watch the meeting from another room. Opportunity to provide public comment in person will be provided; however, contactless comment methods are also available at [www.christiansburg.org/publiccomment](http://www.christiansburg.org/publiccomment) to ensure resident access and safety.

Never miss a meeting! Sign up for notifications at [www.christiansburg.org/notifyme](http://www.christiansburg.org/notifyme).

All meetings are recorded and posted to the Town's YouTube page at [www.christiansburg.org/YouTube](http://www.christiansburg.org/YouTube).

## HOW TO STAY IN THE KNOW

### NOTIFICATION SYSTEMS

Looking to stay updated on all the happenings in Christiansburg? The Town has you covered with two convenient notification systems that can send you texts, calls, or emails about local events and news. Don't miss out on what's going on around you!

**Notify Me** sends a notification whenever new information is posted on our website. Anytime we update a news story or post a public meeting, you'll receive an email or text message. Notify Me helps you stay up-to-date about Town-wide initiatives, meetings, ongoing capital projects, community programs and more. To sign up, visit [www.christiansburg.org/notifyme](http://www.christiansburg.org/notifyme).

**Citizens Alert** allows you to receive emergency alerts (calls, texts or emails) based on your address or specific interests. You can customize what type of information you want to receive, such as weather alerts from the National Weather Service, trash service updates, crime notifications, waterline breaks, road closures and more. To sign up, visit [www.christiansburg.org/alerts](http://www.christiansburg.org/alerts).

#### Want to stay in the know?

Sign up for our Notify Me and Citizen Alert systems to receive Town info via phone, text or email.  
Notify Me: [www.christiansburg.org/notifyme](http://www.christiansburg.org/notifyme)  
Citizens Alert: [www.christiansburg.org/alerts](http://www.christiansburg.org/alerts)



THE PLACE TO BE.

CHRISTIANSBURG VA

Have a question? Let us know!  
540-382-6128, ext. 1151  
[info@christiansburg.org](mailto:info@christiansburg.org)  
[www.christiansburg.org](http://www.christiansburg.org)



Town of Christiansburg, VA

Published by Amy South

2h · 🌐

Enjoying summer with your pup? Don't forget to clean up! 🐾

Dog waste doesn't just create a mess—it's a major source of E. coli in our local streams, which are already considered impaired. When left on the ground, it can wash into storm drains and pollute waterways, risking health for both people and pets and harming aquatic life.

Important reminders:

- Never toss pet waste into street drains—they lead straight to streams.
- Always bag waste and dispose of it in a trash can.
- You'll find waste stations and trash cans downtown, on trails, and in parks.

Let's work together to keep Christiansburg clean and our waters safe! Learn more at:  
<http://bit.ly/3FWvXr9>



## Enjoying summer with your pup? Don't forget to clean up!

### Reminders:

- ✓ Never toss pet waste into street drains—they lead straight to streams.
- ✓ Always bag waste and dispose of it in a trash can.
- ✓ You'll find waste stations and trash cans downtown, on trails, and in parks.



# Virginia Master Naturalists NRV Chapter Presentation on Stream Restorations

## Patricia Colatosti

---

**From:** Barbara Glaser <barbaraglaser13@gmail.com>  
**Sent:** Friday, September 27, 2024 1:16 PM  
**To:** Patricia Colatosti  
**Subject:** Re: VA MN NRV Chapter meet 10/21 7pm

Thank you! Sounds perfect for our group. I would like a little more input from you about how you want to be introduced, please. Have a wonderful weekend and try to stay dry. Barb

On Fri, Sep 27, 2024 at 1:08 PM Patricia Colatosti <[pcolatosti@christiansburg.org](mailto:pcolatosti@christiansburg.org)> wrote:  
Here's the title and brief description:

### **Using Stream Restorations to Improve Water Quality in Crab Creek and Roanoke River Tributaries in Christiansburg**

*Patricia Colatosti, Environmental Program Supervisor for the Town of Christiansburg, will discuss the Town's four stream restoration projects, including goals, challenges, and how Master Naturalists have become a critical part of monitoring and maintenance.*

## Patricia Colatosti

Environmental Program Supervisor  
Town of Christiansburg  
100 East Main Street  
Christiansburg, VA 24073  
(540) 382-6120 x1157

---

**From:** Barbara Glaser <[barbaraglaser13@gmail.com](mailto:barbaraglaser13@gmail.com)>  
**Sent:** Wednesday, September 25, 2024 11:06 AM  
**To:** Patricia Colatosti <[pcolatosti@christiansburg.org](mailto:pcolatosti@christiansburg.org)>  
**Subject:** Re: VA MN NRV Chapter meet 10/21 7pm

Wonderful to hear that all is good to go. It is pretty crazy keeping up with long range schedules. Thanks for making your info available in time for our weekly calendar email. I will send you the link for the meeting soon. Barb

On Wed, Sep 25, 2024 at 11:01 AM Patricia Colatosti <[pcolatosti@christiansburg.org](mailto:pcolatosti@christiansburg.org)> wrote:  
Yes, we are still good for October 21. I will have a title and brief description for you by Friday morning of this week. Thank you for reaching out again! I appreciate the reminder given how far in advance we scheduled this.

Patricia

## Patricia Colatosti

Environmental Program Supervisor

Town of Christiansburg  
100 E Main St  
Christiansburg, VA 24073  
540-382-6120 ext 1157

---

**From:** Barbara Glaser <[barbaraglasers13@gmail.com](mailto:barbaraglasers13@gmail.com)>  
**Sent:** Wednesday, September 25, 2024 10:48:41 AM  
**To:** Patricia Colatosti <[pcolatosti@christiansburg.org](mailto:pcolatosti@christiansburg.org)>  
**Subject:** VA MN NRV Chapter meet 10/21 7pm

Hello Patricia

Double Checking to be sure we are good for you presenting on October 21, 7 pm, virtual meeting for the Va Master Naturalist NRV Chapter. It is time for us to add you to our weekly calendar, get the link set up, and make sure what you would like your introduction to include. A title for your presentation and brief description would be very helpful. It would be great to include this info in our calendar that comes on this Sunday, if that is possible. Please feel free to give me a call any time if I can assist you in any way. We appreciate your time and look forward to your presentation.

Best Regards, Barb

---

## Patricia Colatosti

**From:** Fred Umberger <[fred915beth@gmail.com](mailto:fred915beth@gmail.com)>  
**Sent:** Monday, October 21, 2024 8:48 PM  
**To:** Patricia Colatosti  
**Subject:** Master Naturalists

Thanks for presenting to us about the streams! Fred

---

## Patricia Colatosti

**From:** Tonia Moxley <[tonia.moxley@gmail.com](mailto:tonia.moxley@gmail.com)>  
**Sent:** Wednesday, October 23, 2024 1:02 PM  
**To:** Patricia Colatosti  
**Subject:** Thanks for speaking!

**Follow Up Flag:** Follow up  
**Flag Status:** Completed

Hey Patricia,

I wasn't able to make the meeting, but you got great reviews from members. Here's the video if it's of use to you.

<https://www.youtube.com/watch?v=5WhLshTECKo>

Tonia

--

Tonia Moxley  
[tonia.moxley@gmail.com](mailto:tonia.moxley@gmail.com)

# NRV Home Expo Documentation

**Patricia Colatosti**

---

**From:** John W. Burke <burkejw@montgomerycountyva.gov>  
**Sent:** Friday, March 28, 2025 1:40 PM  
**To:** Loper, Andrew; Patricia Colatosti; Devon Shields; Clayton Morgan; Philip M. Hash; Brette E. Chambers; Micky Mullins; Kafi Howard (khoward@blacksburg.gov)  
**Subject:** NRV Home Expo 2025 Homebuilders Show

Good afternoon,  
The homebuilders show had an attendance of 1,500 this year. This is an increase over the 1,200 figure from last year.  
John

## John W Burke

Stormwater Specialist | Environmental Services  
(540) 394-2120, ext. 54133 | [montva.com/stormwater](https://montva.com/stormwater)  
Follow #MontVaMS4 on [Facebook](#) and [Twitter](#)



---

**From:** Kelsey Grow - NRVHBA <kelsey@nrvhba.com>  
**Sent:** Friday, March 28, 2025 11:26 AM  
**To:** John W. Burke <burkejw@montgomerycountyva.gov>  
**Subject:** [EXTERNAL] Duplicate Check

Hi John -

I hope you are well! I received a duplicate check in the mail for the goody bag insert. Would you like for me to void this and shred or should I mail it back?

Also, our attendance this year was just over 1500. I know you typically ask 🤔

Thanks!

**Kelsey Grow** | Executive Officer

New River Valley Home Builders Association

[\[outlook-sdf.office.com\]](mailto:sdf.office.com) NRVHBA Members - Book time to meet with me  
[sdf.office.com](mailto:sdf.office.com) [outlook-sdf.office.com] about membership!

Mailing Address: P.O. Box 2010 | Christiansburg, VA 24068

Supplies	Source	Start Count	End Count	Distributed
DCR "A virginian's Year-Round Guide to to Yard Care"	DCR	40	37	3
Stormwater Activity Book	VT	40	17	23
Crayons (pack of 4)	TOC	50	25	25
Pet Waste Bag Rolls	MOCO, VT, TOC, TOB	304	274	30
DCR "Clean and Green" Runoff Mitigation Pamphlet	DCR	57	41	16
Wonderful Water Pamphlet	MOCO	69	66	3
Scoop the Poop Magnet	MOCO	200	189	11
MOCO Water Quality Flyer (placed in attenddee bags by HBA)	MOCO			0
DCR "I live in the roanoke Rover watershed" bumper stickers	DCR	9	5	4
Watershed Connection Flyer	TOC	75	47	28
Native Southwest Virginia Plant Guide	TOC	119	3	116
Stormwater Coloring Books	TOC	50	17	33
Stormwater Drop Magnet	TOC	100	95	5
VA Natives Card		24	24	0
Native plant qr code		90	64	26
VT Ruler Pen	VT	50	0	50

## Appendix B: Documentation of Public Involvement Activities

## Towne Branch Master Naturalist exotic invasive plant removal-correspondence

### Patricia Colatosti

---

**From:** Patricia Colatosti  
**Sent:** Friday, February 7, 2025 3:50 PM  
**To:** Fred Umberger  
**Subject:** Re: plans for town's invasive plants

I do appreciate your work at Depot Park. I just found out we have beavers at the park and they are busy being beavers and cutting down trees. Do you have any contacts within the Master Naturalists who could provide some guidance?

Thanks,

Patrica

### Patricia Colatosti

Environmental Program Supervisor  
Town of Christiansburg  
100 East Main Street  
Christiansburg, VA 24073  
540.382.6120 ext 1157

---

**From:** Fred Umberger <fred915beth@gmail.com>  
**Sent:** Thursday, January 30, 2025 3:12:46 PM  
**To:** Patricia Colatosti <pcolatosti@christiansburg.org>  
**Subject:** plans for town's invasive plants

Thanks for all your work on invasive plants. Beth showed me your presentation. I keep trying to find a way to work at Depot Park. I already own some treated clothing that is supposed to help with ticks. So I will again make an effort to work on the bird boxes and the invasives. Thanks for working on this. Fred

### Patricia Colatosti

---

**From:** Patricia Colatosti  
**Sent:** Friday, March 21, 2025 1:45 PM  
**To:** Fred Umberger  
**Subject:** RE: Depot Park

That is great news! Multiflora rose is a beast to cut. Thank you!

### Patricia Colatosti


Environmental Program Supervisor  
Town of Christiansburg  
100 East Main Street  
Christiansburg, VA 24073  
540.382.6120x1157  
www.christiansburg.org

---

**From:** Fred Umberger <fred915beth@gmail.com>  
**Sent:** Wednesday, March 19, 2025 5:23 PM  
**To:** Patricia Colatosti <pcolatosti@christiansburg.org>  
**Subject:** Depot Park

There is a massive multiflora rose that has begun to cover some of the walkway. I cut a big batch of that and I don't think it will mess with the paved path for at least year. Fred


## Diamond Hills Stream Clean up 12/7/2024



**Town of Christiansburg, VA**  
Published by Amy South · December 12, 2024 · 🌐

On December 7, the Town organized a stream cleanup at Diamond Hills Stream Restoration, and it was a great success!


Twelve volunteers participated, removing 17 bags of trash, totaling 106 lbs., from the wetlands.


A big thank you to everyone who volunteered. Your efforts are greatly appreciated in helping to keep Christiansburg clean and beautiful!




 32

1 comment 5 shares

 Like

 Comment

 Share

## Diamond Hills Stream Clean up 4/5/2025



## Master Naturalists Save our Streams Monitoring group

Below is one sample of data that has been returned to the Town from one monitoring date. More data is available upon request.

---

**Patricia Colatosti**

**From:** Patricia Colatosti  
**Sent:** Thursday, November 14, 2024 5:59 PM  
**To:** Tonia Moxley  
**Subject:** Re: Crab and trib benthic survey

The trib definitely has some sedimentation issues that I think are part of the problem. We have some upstream repairs to do that I hope will help.

I am amazed that Crab Creek is that good given the location of the train tracks.

Thanks for monitoring!

**Patricia Colatosti**

Environmental Program Supervisor  
Town of Christiansburg  
100 East Main Street  
Christiansburg, VA 24073  
(540) 382-6120 x1157

---

**From:** Tonia Moxley <tonia.moxley@gmail.com>  
**Sent:** Sunday, October 13, 2024 5:25 PM  
**To:** Patricia Colatosti <pcolatosti@christiansburg.org>  
**Subject:** Crab and trib benthic survey

Hey Patricia,

10 of is converged on the streams today.

Crab was 9 on the scale ( acceptable) and the trib was 6 (unacceptable). I attached pics of the counts.

In spring, Crab was 10 and trib was 6.

## Stream Monitoring New River Conservancy Water Watchers. Referenced spreadsheet available upon request

### Patricia Colatosti

---

**From:** John Copeland <[john@newriverconservancy.org](mailto:john@newriverconservancy.org)>  
**Sent:** Tuesday, April 29, 2025 12:14 PM  
**To:** Patricia Colatosti  
**Cc:** John Copeland  
**Subject:** Re: Crab Creek April chemical monitoring  
**Attachments:** Crab Creek and Walnut Branch Christiansburg Water Quality Data 2021 to 2025.xlsx

Here are the 3 datasets in 1 spreadsheet, with 1 worksheet for each dataset, Crab Creek (2021 to 2023), Crab Creek (2024 to 2025), and Walnut Branch (2024 to 2025).

Note that the colonies per 100 ml column is to the far right of each worksheet. Also note that the Crab Creek locations were slightly different. Coordinates for each site are on the far right of each worksheet. There's way more information in these spreadsheets than what you were looking for, but I dumped all the data into 1 spreadsheet.

We use Coliscan Easygel for our E. coli sampling. VA DEQ has a more intensive protocol. I suggest you look at their monitoring of these creeks as well because I think they did sampling in 2024.

Your comments on Walnut Branch are noted. I was aware that there is a pond upstream from I81 so the Dissolved Oxygen readings at that site were particularly low.

On Thu, Apr 24, 2025 at 3:06 PM Patricia Colatosti <[pcolatosti@christiansburg.org](mailto:pcolatosti@christiansburg.org)> wrote:

Yes, the spreadsheet would be helpful, as well as the data from Walnut Branch. The Town is about to embark on a sanitary sewer upgrade in that watershed and I will budget some dollars to look at the E. coli post construction. Of course there is a cattle farm with the cows in the stream just upstream from Kiwanis Park so who knows what we will happen.

Also Daniel Smith's data from Crab Creek would be helpful.

### Patricia Colatosti

Environmental Program Supervisor

Town of Christiansburg

100 E Main St

Christiansburg, VA 24073

540-382-6120 ext 1157

---

**From:** John Copeland <[john@newriverconservancy.org](mailto:john@newriverconservancy.org)>  
**Sent:** Wednesday, April 23, 2025 11:56:04 AM  
**To:** Patricia Colatosti <[pcolatosti@christiansburg.org](mailto:pcolatosti@christiansburg.org)>  
**Cc:** Tonia Moxley <[tonia.moxley@gmail.com](mailto:tonia.moxley@gmail.com)>; Daniel Smith <[daniel@newriverconservancy.org](mailto:daniel@newriverconservancy.org)>; John Copeland <[john@newriverconservancy.org](mailto:john@newriverconservancy.org)>  
**Subject:** Re: Crab Creek April chemical monitoring

Patricia:

I can provide Tonia's sampling data on Crab Creek in a spreadsheet format for you if that helps. Her data series started in May 2024, so I have data for her site through April 2025.

I also have a 10 month series from 2 volunteers who collected data on Walnut Branch at the Kiwanis Park in Christiansburg from May 2024 to March 2025.

Attached is data collected on Crab Creek by Daniel Smith from May 2021 to January 2023. His site was located upstream from Tonia's site. The coordinates are in the spreadsheet.

# Christiansburg Aquatic Center FINS Summer Camp Stream Day

---

**Patricia Colatosti**

**From:** Jilliann Kowalcik  
**Sent:** Monday, July 15, 2024 9:57 AM  
**To:** Patricia Colatosti  
**Cc:** Terry Caldwell; Emalee Poff; Meredith Jones  
**Subject:** RE: FINS Summer Camp: Town Spirit Week 2024

Wonderful! Thank you so much—the kids will be SO excited!!

---

**From:** Patricia Colatosti <[pcolatosti@christiansburg.org](mailto:pcolatosti@christiansburg.org)>  
**Sent:** Friday, July 12, 2024 4:58 PM  
**To:** Jilliann Kowalcik <[jkowalcik@christiansburg.org](mailto:jkowalcik@christiansburg.org)>  
**Cc:** Terry Caldwell <[tlcaldwell@christiansburg.org](mailto:tlcaldwell@christiansburg.org)>; Emalee Poff <[epoff@christiansburg.org](mailto:epoff@christiansburg.org)>; Meredith Jones <[mjones@christiansburg.org](mailto:mjones@christiansburg.org)>  
**Subject:** RE: FINS Summer Camp: Town Spirit Week 2024

Thursday August 1 at 10:30 am works. Meredith Jones, our new Assistant Director of Engineering, will be coming along to help!

**Patricia Colatosti**

Environmental Program Supervisor  
Town of Christiansburg  
100 East Main Street  
Christiansburg, VA 24073  
(540) 382-6120 x1157

---

**From:** Jilliann Kowalcik <[jkowalcik@christiansburg.org](mailto:jkowalcik@christiansburg.org)>  
**Sent:** Tuesday, July 9, 2024 4:36 PM  
**To:** Patricia Colatosti <[pcolatosti@christiansburg.org](mailto:pcolatosti@christiansburg.org)>  
**Cc:** Terry Caldwell <[tlcaldwell@christiansburg.org](mailto:tlcaldwell@christiansburg.org)>; Emalee Poff <[epoff@christiansburg.org](mailto:epoff@christiansburg.org)>  
**Subject:** RE: FINS Summer Camp: Town Spirit Week 2024

That would be wonderful! If Monday or Tuesday of that week may would work better for you, please let me know!

---

**From:** Patricia Colatosti <[pcolatosti@christiansburg.org](mailto:pcolatosti@christiansburg.org)>  
**Sent:** Tuesday, July 9, 2024 3:23 PM  
**To:** Jilliann Kowalcik <[jkowalcik@christiansburg.org](mailto:jkowalcik@christiansburg.org)>  
**Cc:** Terry Caldwell <[tlcaldwell@christiansburg.org](mailto:tlcaldwell@christiansburg.org)>; Emalee Poff <[epoff@christiansburg.org](mailto:epoff@christiansburg.org)>  
**Subject:** RE: FINS Summer Camp: Town Spirit Week 2024

I can come on August 1 at 10:30 am. Clayton will be on vacation but I will try to get someone else to come as well. I may ask for help from one of the VT Cooperative Extension Master Naturalists as well.

**Patricia Colatosti**

Environmental Program Supervisor  
Town of Christiansburg  
100 East Main Street  
Christiansburg, VA 24073  
(540) 382-6120 x1157

**From:** Jillian Kowalcik <[jkowalcik@christiansburg.org](mailto:jkowalcik@christiansburg.org)>  
**Sent:** Monday, July 8, 2024 12:27 PM  
**To:** Patricia Colatosti <[pcolatosti@christiansburg.org](mailto:pcolatosti@christiansburg.org)>  
**Cc:** Terry Caldwell <[tcaldwell@christiansburg.org](mailto:tcaldwell@christiansburg.org)>; Emalee Poff <[epoff@christiansburg.org](mailto:epoff@christiansburg.org)>  
**Subject:** FINS Summer Camp: Town Spirit Week 2024

Good afternoon, Patricia!

I hope you are well! Our campers really enjoyed the session you and your team had with them at the stream last summer and we were hoping you all may be available again for something similar? Town Spirit week will take place the week of July 29 this summer. Would either Wednesday, July 31 or Thursday August 1 work with your team's schedule? If so, we can have the campers ready to go at 8:30am or 10:30am either day--- just let us know 😊

*Jillian Kowalcik*

Program Supervisor  
Christiansburg Aquatic Center  
595 North Franklin Street, Christiansburg, VA. 24073.  
(540)381-7665 [jkowalcik@christiansburg.org](mailto:jkowalcik@christiansburg.org)



*Live slow. Swim fast.*



# MCPS Sixth Grade Stormwater Days April 15th and 16<sup>h</sup> 2025 documentation

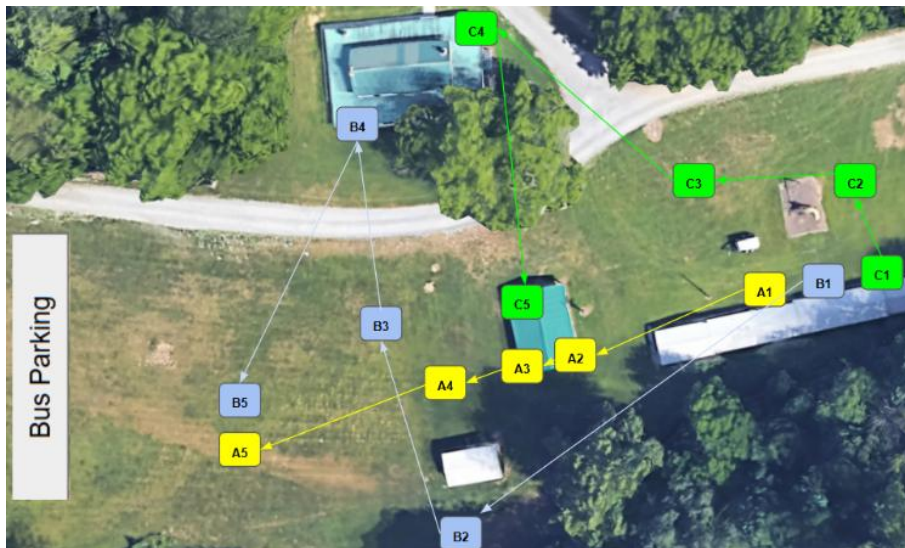
**Patricia Colatosti**

**From:** Tony Deibler <tonydeibler@mcps.org>  
**Sent:** Wednesday, May 28, 2025 3:31 PM  
**To:** Philip M. Hash  
**Cc:** Howard Kafi; Patricia Colatosti; Loper, Andrew; Clayton Morgan; kekyle@vt.edu  
**Subject:** Re: Stormwater Days Event - Attendance Data Request

This year . . . there were 735 sixth grade students within MCPS. I would tend to cout all of them . . . but, technically, the bus accident prevented close to 100 students from attending.

Is this what you need . . . or is there some other information I can provide?

Tony Deibler  
Administrator: Science, STEM & Library-Media  
Montgomery County Public Schools  
540-382-5100  
[www.mcps.org](http://www.mcps.org)



	Rotation A	Rotation B	Rotation C
1	Trout Run (Mike B and Lesa M)	Trout Run (Mike B and Lesa M)	Trout Run (Mike B and Lesa M)
2	Stream Table (Kafi & Tony)	Enviroscape & Water Testing (Helen & Kendra)	Ward's Flood model (Clayton and Philip)
3	Master Naturalist Jean Elliot: Only Tuesday April 15 (Macroinvertebrate ID table) Stream Team: Only Wednesday, April 16th ( macroinvertebrate ID / Aquatic food webs) Gretel Baur	EMHS AP Bio	EMHS AP Bio
4	EMHS AP Bio	Ground water model (Erin Ling ) inside	Filter Media (VT/Andrew & Mark)
5	Fishing Pole/Fly Casting (IWL volunteers & AHS Students)	Plant SWVA Natives: Only on Tuesday, April 15th (Plant identification - invasive species) Nicole Hersch WEDNESDAY only Fishing Pole/Fly Casting (IWL volunteers & AHS Students)	Benthic Macroinvertebrates - DEQ (confirmed both days 3/2025) - Mary Dail

## Appendix C: List of Illicit Discharges

Table 6: Illicit Discharges

Illicit Discharge	Part I.E.3.e(3)(a) Location and Source	Part I.E.3.e(3)(b) Date Observed & Date Reported:	Part I.E.3.e(3)(c) Detected during Screening, Reported by Public or Other (Describe):	Part I.E.3.e(3)(d) Investigation Resolution:	Part I.E.3.e(3)(e) Description of Follow-up Activities:	Part I.E.3.e(3)(f) Date Investigation Closed:
Discharging outfalls	under investigation		detected during screening	no resolution. Multiple outfalls noted to be discharging during screening. Suspect springs and streams piped to storm sewer.	Investigation during extended dry weather	Remains open as investigations continue.
Trash complaint for trash on and around N Franklin St Kroger and blowing into the adjacent park and stream	Kroger lot, possibly dumpsters	2/15/2023	Reported by Public	Management of dumpsters on private property is covered under the Zoning section of the Town code, so this was handled by Town Administration and the Planning Dept. The Town Manager called Kroger and spoke to the manager. In April 2023, P Colatosti noticed a landscaper picking up trash in the Kroger parking lot. Communication with Town Administration/Planning Dept at that time indicated Kroger had been sent a violation notice. Enforcement is being held off until the vegetation dies back in fall 2023 to see if the trash problem has been fully addressed.	Continued monitoring of area by Town employees.	Trash has decreased. Investigation closed 6/30/2025.

350 College St "Algae Bloom?"	TOC received a call from Mr. Mueller at 350 College St. He stated that there is a large amount of strange algae in the stream behind his house	3/20/2023 and 4/13/2023 and 5/12/2023 (last two are really about the smell) (Reported by two different residents on different days ) Combined with previously reported complaint from 1/6/2023	Reported by Public	Not resolved. C Morgan walked this section of stream in March and May 2023 and documented the mats of brown and white algae. There is no algae or smell or white/grey substance in the stream upstream of Radford St.	Continued visits over the summer suggest that this problem washes out after heavy rains and may be seasonal. There is also a significant amount of mulch washing into the stream from a mulch yard on College St. Contacted DEQ for any help on algae issues and have possible contacts at VT and Ferrum. Investigation continues.	Closed May 2025. See resolution for College Street Sewage Smell and Hickok and College
Grease Discharge from Arby's	Grease observed at Arby's outfall pipe in Market Place stormwater detention pond. Pictures in folder.	5/1/2024	Found by Town Staff during inspection of adjacent Stormwater BMP	Not resolved but does not appear to be ongoing	4/30/2024- Noticed discharge 5/1/2024- Talked to manager, walked site, found inlet where oil was poured into storm system. Manager unaware of discharge, said it couldn't have been Arby's employees. Manager will call me back after talking to employees. Walked stream below Arby's near Huckleberry Trail, no signs of grease/oil. 5/28/2024- Pictures taken. Oil visible but no signs of new discharge. No odor. 6/26/2024- Picture taken. Oil still coating vegetation around outlet. No odor or signs of new discharge.	Closed 11/15/2025. Repeated inspections showed no recurrence.

Apparent dumping by Aztec Rental employees storm drain near corner of Hagan and Roanoke	Storm drain curb inlet near the corner of Hagan and Roanoke	8/2/2024	Two instances reported by Town Employee	Dumping did not appear to recur	Site visit on 8/5/2024 did not find evidence of dumping.	Repeated site visits did not find recurrence of dumping.. Closed 2/5/202
Pressure washing discharge to Roanoke St at 2100 Roanoke St	Behind Hunan House Restaurant	8/6/2024 Resident reported a water main break in front of Hunan House. It was investigated by Justin Shepherd and discovered that there was not a water main break but there was a company pressure washing behind the Building and the water was flowing down the shoulder of Roanoke St.	Town resident and Town employee	Investigated 8/8/2024 Picture were taken behind Hunan House and where water would have been draining to Roanoke St. It had rained significantly before inspecting the location so any signs of an illicit discharge would have been washed away. Nothing suggesting an illicit discharge was observed.	None	No recurring complaints. Closed 8/8/2024
Report of sewage in stream near 350 College St and intersection of Radford and College	Not found in this investigation. See later Hickok and College Investigation.	8/27/2024	Citizen Complaint	No resolution. See later investigation at same location	8/27/2024 Citizen complaint about sewage overflow into stream. Site walked by C. Morgan and P. Colatosti. No recent rain. White substance observed in stream and smell of mop water. White substance and smell observed in manhole at corner of Raford and Eanes (facilityID SD-CB-2471) suggesting source near or including brick building at corner. Clean water observed in manhole draining	Closed 11/15/2024 due to non-recurrence. .

					<p>parking area for building (facilityID SD-CD-2464). PW will follow up with a video of affected pipes to find source of suspected discharge.</p> <p>9/12/2024 Follow up visit. Stream water clean at point where stream exits from under Radford St.</p> <p>10/14/2024- Follow up visit. No issues. Photos in folder.</p> <p>11/15/2024- Follow up visit. No issues. Photos in folder</p>	
<p>On 9/4/24, construction staff reported to town staff clean water discharging from main outfall pipe at the head of the project the day before (9/3/24). The flow was substantial and work was stopped for the day. There was no rain that day. The water was clear. The run time is not known.</p>	<p>Intersection of Prospect and Industrial Drives at the Christiansburg Industrial Park Stream Restoration project site. Source not found</p>	<p>Town contractor reported.</p>	<p>None. No impact observed. A low chlorine reading was reported by the contractor . Assumed to be potable water.</p>	<p>9/4/2024 Incident reported to staff but outfall was not running at time of investigation. Wet storm pipes were followed along Prospect Dr. until around 2267 Prospect Dr. Discharge could have been flushing of private fire hydrants. Downstream areas were observed by Clayton Morgan and John Burke from Montgomery County at the Walnut Creek Pump Station. No issues were found. Live crayfish were observed and no fish were observed at that location.</p>	<p>None</p>	<p>Closed 9/4/2024</p>

Report of dumping on Thaddeus Lane at Melindas Melody of chemicals onto the parking lot	Source not found	Reported by Town Resident on 9/5/2024 and forwarded by Town staff on 9/6/2024	Reported by Town resident that substance was dumped two weeks before phone call	Spill cleaned up. No follow up.	P. Colatosti called the Melindas Melody apartment manager on 9/9/2024. She had already spoken to the resident and cleaned up the small amount of degreaser.	Closed 9/9/2024
Dumping of soapy wash water from a bucket from custodial activities onto a tree/mulch	55 E Main St in front of Montgomery County Courthouse	Observed by Town staff 10/24/2024	Town Staff walking by	P. Colatosti spoke with the people who dumped the bucket of soapy water. It all went onto the mulch, no clean up was possible	None	Closed 10/24/2024
Cloudy water in the stream at Commerce St	Commerce St between N Franklin and College St. Source not found	11/20/2024	Town resident called Public Works	None. Site continues to be observed	11/20/2024 Citizen called public works to check out cloudy water coming out of the culvert behind National Bank. Jason Price investigated and took photos. C. Morgan meet J. Price at site. Water was a cloudy white/grey but slightly dissipated while being observed for 10 minutes. Stream exposed behind Macados was clear. Stream exposed at Radford and College was slightly cloudy but hard to determine. First pool in Depot park was cloudy but the pool at the skate park culvert was completely clear. No obvious signs of dumping in grates near Commerce. J. Price will follow up the next couple days and document. C. Morgan will follow up on a monthly basis if necessary. Photos in folder. 12/10/2024 Update- Location will be observed monthly during VWP inspections on the Hickok St project (PN: 02098).	Open while upstream construction impacting this stream is ongoing
Oil in ditch	Source not found. Oil in ditch along Prospect Dr below 2234 Prospect	3/12/2025	Reported by Town Staff	Open as of 6/30/2025	3/12/2025 Public Works cleaned up the ditch and put a compost sock at the downstream storm drain inlet to prevent oil from entering during this weekends predicted rain event. They looked on all the adjacent/upstream properties but could not find any	Open as of 6/30/2025 as follow up for reoccurrence continued

					evidence of oil in any of those storm drain systems or parking lots. Thickness of oil suggested dumping. P Colatosti to follow up with down stream pictures on 3/13/2025 and monitor monthly for 6 months	
Mothballs in Right of Way around mailbox	630 Warren Ct	3/25/2025	Reported by Town Resident	4/3/2025 Mothballs confirmed removed	Town staff spoke with resident that the mailbox is in the right-of-way and the Town does not allow mothballs placed on the street	Closed 4/3/2025
Strong sewage smell coming from unnamed tributary to Towne Branch at Hickok St in Hickok St Drainage Improvements project	Sanitary sewer pipe and potable water pipe leaking into storm drain at 6 and 8 Radford St	4/9/2025	Reported by Town contractor	Sanitary sewer pipe and water line repaired/replaced.	Testing for E. coli on 4/10/2025 at Hickok St returned the highest value for the test. Methodical testing of flow upstream in both the stream and adjacent storm and sanitary lines narrowed the location to Radford St. CCTV confirmed issues with sanitary and water lines and discharge into storm sewer.	Closed May 2025. Also closed all previous sewage smell and algae investigations at this location.
Floor Clare company dumped what appeared to be waste water onto mulch, lawn, and parking area of townhome	Van parked near 485 John Adam's Dr.	4/22/2025	Reported by Town Resident	5/9/2025 P Colatosti called floor care company and left a message about Town ordinance barring waste/wash water discharges where they can enter the storm drain	Site visit on April 25, 2025 was after a rain with no substantial evidence left of dumping. Resident's pictures clearly showed hose from van discharging liquid onto the ground.	Closed 5/9/2025. Non recurring

Appendix D:  
Documentation of Land Disturbance Complaints and Comments/Complaints on MS4 Program Plan

## MCM2 Comment/Complaint/Concern MS4 Program Plan and Potential Stormwater Pollution issue

Comment/Complaint/Concern	Date	Description of Response
The Town received via email a question about the stormwater sections of the Town code that are more stringent than the state code	11/6/2024	P Colatosti provided the two sections of Town code that were more stringent than the state regulation. Both were developed to meet MS4 permit requirements
The Town received a phone call from a resident in a community with an HOA and two Stormwater Management Facilities and a BMP Maintenance Agreement. Resident requested cost of Town maintaining BMPs as an option and the cost in general to maintain the BMPs	2/26/2025	P. Colatosti responded via phone and email that the Town does not maintain estimates of those costs, and that if the Town ended up having to do maintenance the cost would be on a case-by-case basis. Resident was also referred to Neighborhood Services to discuss tall grass code compliance
AirGas representative called to inquire about any needed permits to wash vehicles outside at their site in Christiansburg on Prospect Dr. They cannot find a local mobile wash company that reclaims the wash water.	3/5/2025	P. Colatosti spoke with the representative on the phone and explained that under the Town's MS4 permit, commercial vehicle wash water cannot be discharged to the storm sewer. And that the Town has requirements for discharging to Town sanitary sewer. Representative will keep looking for solutions
985 Montgomery St. Complaint relayed to P. Colatosti from Planning Dept. about neighborhood complaints about water pollution in Crab Creek from a farm in a residential neighborhood	4/9/2025	Written response to Planning Dept. on 5/1/2025 after extensive research included that the farming activities on the property drain directly to the stream across private property, and therefore are probably not enforceable under the IDDE section of the Town code as no Town storm sewer is involved. We can report specific dumping directly to DEQ. Water Watcher downstream is not reporting alarming levels of E. coli.
Complaint forwarded through Planning Dept from Building Dept that Wingate Hotel on Hampton Blvd had not completed their required storm drain inspection or fixed the drainage pipe in front of the property	4/9/2025	P. Colatosti walked the site on 5/6/2025. Minor issues with dry swale and sediment. Some subsidence. Underground detention not inspected but subsiding inspection ports noted. Second inspection, owner notification, and request for private party inspection of underground detention will be handled by new hire this summer.
Resident called to complain that the stormwater "retention pond" at the Huckleberry Court	6/3/2025	Town last inspected this BMP on 6/30/2022 and found it needed maintenance. There is no BMP Maintenance Agreement for the property. P. Colatosti received a request for plans for the BMP

community had not been maintained since 2020.		from a local Stormwater Maintenance contractor on 6/23/2025. Plans were provided. No more complaints have been logged..
---	--	---

## Complaints related to Land Disturbance activities

Project	Date received	Complaint	Resolution
Clifton Town Center Ph. 1	07/08/24	Dust in air	Original complaint was made on 7/1/2024 to DEQ. Due to the length of time between complaint being sent to one TOC staff member, and that staff member receiving the complaint due to being out of the office, the complaint was not investigated on site. Dust complaints require very timely inspections. The complaint was noted and communicated to the Engineering Inspector as something to keep an eye on during regular inspections.
Magistrate's office	07/26/24	Concrete washout on sidewalk	A. Shaw investigated. Concrete was not washed out on the ground
Clifton Town Center Ph. 1	8/13/2024 and 8/14/2025	Dust	The Town Engineering Inspector assigned to the site conducted inspections in response to dust complaints on 8/14/24, 8/15/24, and also during a routine inspection on 8/20/2024. On 8/14 no dust problem was observed and the RLD for the site was notified of the complaint. On 8/15 there were small amounts of dust being kicked up by the trucks on the site. A second representative of the contractor was informed of the dust complaint and he indicated they would keep watering the site. On 8/20/24, the site was actively taking measures to control the dust.
1413 Scott St	08/22/24	Please investigate a customer complaint of "downed trees" for possible land disturbance at 1413 Scott Street/1340 Roanoke St. Report back your findings	A Shaw investigated. AEP was removing trees from downed power lines and pole.
Proposed Dollar General	08/22/24	New storm pipe for discharge from site pointing at their property	Cole Hammonds investigated, pipe installed per plan, Don Cole returned the complainant's phone call
3301 Roanoke St JC Martin	08/27/24	Unpermitted land disturbance and fill site	Enforcement Action - Notice to Comply issued on 9/12/2024 requiring all land disturbance to cease, site to be stabilized, and obtain a VESMP Permit by 3/31/2025. As of 6/30/2025, site plans were close to approval.
Clifton Town Center Ph. 1	09/09/24	Working on Saturday	Called Preston and let him know we got a complaint about working on Saturday. [ Told him to follow pre-con. notes. ]

Midway Plaza Townhomes	09/17/24	Lack of stabilization and sediment controls	The site was inspected in response to this complaint on 9/24/2024. The complaint was only sent to one email account, and Town staffer was on vacation. The site did need stabilization in areas, this has been communicated to the site operator. The site was also found to have recently cleared an area outside of the LOD. That area is stabilized and dormant while the Town and the operator discuss remedies. The ESC plan for this site has limited use of silt fence. Silt fence in need of repair was not found. Original complainant was contacted via email on 11/8/2024 once the site was in compliance.
1200 Cambria St	10/03/24	tracking onto Cambria St	Engineering Inspector visited site. Land Disturbance under 10,000 sf
35 Welch Circle	11/25/24	dirt pushed over silt fence	C. Hammonds investigated. Storm event had pushed over silt fence, spoke with contractor onsite and silt fence was cleaned out and stood back up by afternoon
Falling Branch Phase 2 Pad 2	12/11/24	Grading on site causing downstream agricultural pond to be muddy	Engineering Inspector addressed controls with site operator and spoke with Town resident.
35 and 55 Welch Circle	12/27/24	Construction debris in street	Engineering Inspector addressed clean up of construction debris with site operator. Complainant did not wish to be contacted.
Midway Plaza Townhomes	02/05/25	concern from downstream resident about new stormwater management facility	P. Colatosti returned phone call and discussed the development's stormwater management plan with him and how the new SWM facility is supposed to discharge. Resident has prior knowledge of stormwater management concepts and was satisfied with discussion.
Carter Machinery	03/14/25	Land disturbance outside of approved limits of disturbance	Town Engineering Inspector C. Hammonds inspected site and issued a failed inspection report. Site repairs for stabilization were completed per the dates in the inspection report. Town staff met with the site operator, and a plan revision was requested. Revision was approved on 6/5/2025
333 Tanglewood	03/21/25	Land disturbance causing runoff and sediment onto downstream property	Town Engineering Inspector A. Shaw conducted a site visit and confirmed that the owner was paving a driveway that was previously stone. No additional land disturbance, and no disturbance over 10,000 sf. Public Works was notified to inspect/maintain ditches on Tanglewood.
NRV Passenger Rail	03/19/25	concern of construction equipment in Crab Creek and digging in the creek associated with the passenger rail project.	Town Engineering Inspector C. Hammonds investigated. There was no digging or equipment in the creek. Town staff (C. Hammonds and D. Cole) spoke with residents and contractor on site on 3/19/25 and 3/20/25 Residents were also upset about trees being cut on Town property for the project.

NRV Passenger Rail	04/15/25	Concerns about impact of new stormwater outfall from the passenger rail project on adjoining properties across Crab Creek from the outfall.	Multiple calls were received over two weeks. The final resolution involved the Town Public Relations Manager handling the complaint and a Norfolk Southern Railroad representative met with the landowner to address his concerns. Resident was reported to be satisfied by the railroad's explanation.
Motor Mile Commercial Garage	04/09/25	Land disturbance started without land disturbance permit	P. Colatosti called site operator and told him to stop work and wait for the pending land disturbance permit to be issued. Permit was issued 4/10/2025
Albert Lane	04/14/25	Resident called to say that her right of way had been blocked by soil and vegetation moved onto the road. Investigated as a possible unpermitted land disturbance	P. Colatosti called resident to understand complaint and get permission to be on shared right-of-way. A. Shaw investigated and did not see any land disturbance. ROW was overgrown. Referred back to Planning.
Reserve at Round Meadows	05/12/25	Resident called about stormwater ditch that had been breached and was dumping water down the hill, as well as gully erosion off the end of the cul-de-sac. Resident called originally on 5/9/2025 with few details, and voicemails were exchanged until P. Colatosti talked with the resident on 5/19/2025	Cole Hammonds contacted the site operator to fix the ditch. The ditch was partially fixed. Issues were ongoing as of 6/30/2025 and P. Colatosti spoke with the resident again on 6/23/2025
Christiansburg High School Renovations Full Site	05/23/25	Sediment leaving water line extension part of site and accumulating in driveway at Independence and George Edward Via belonging to 425 Independence	A. Shaw investigated. Sediment was removed and the water line area was paved.
4518 Wayside	05/15/25	Sediment leaving site and blocking ditch and washing on to 4535 Wayside	C. Hammonds investigated. Driveway washing out on a site with a building permit but less than 10,000 sf of disturbance. Town is cleaning ditches and reviewing enforcement options for sites with building permits that fall under the land disturbance permit threshold of 10,000 sf.
70 Lynn Dr	06/05/25	Development/land disturbance complaint .	A. Shaw investigated. Less than 10,000 sf of disturbance. Appeared that resident was making his turnaround bigger.
610 Brammer Lane Mass Grading	06/10/25	Possible land disturbance without a permit. Adjacent site in Montgomery County has an active Land Disturbance Permit. This site has a plan in review with the Town.	C. Hammonds confirmed no land disturbance had started. D Chicosky in Planning called the grading contractor to have the materials and equipment moved off site due to not being a permitted use.

Kensington X/ XI / 820 Holland Loop	06/17/25	Water coming off active construction site, coming under fence and causing erosion	Torrential rains likely exceeding the design storm events for ESC measures on the evening of 6/16/2025 caused multiple issues within the adjacent neighborhood. C. Hammonds worked with contractor to repair ESC measures and clean up sediment. This particular issue is ongoing as of 6/30/2025 due to involving multiple homeowners, the HOA, and a shared ditch that has been modified by multiple parties.
301 Park St	06/18/25	A small retaining wall was removed along Lester St and the exposed soil was washing down Lester St into the entrance to Lester St Townhomes	Area was too small to be considered regulated land disturbance. Investigation by C. Correll uncovered that the removed wall was in the Town Right-of-Way and the issue was referred to Public Works to talk to owner about working the the ROW without permission and to clean up any mud.

## Appendix E: Nutrient Management Plan Implementation

Nutrient Management Plan Application Records

Kiwanis Fields:

Fertilizer Application Records								
Location Information					Management Area Information			
Name					Mgmt Area ID:			
Address					Mgmt Area Size:			
					Plant Species:			
Phone #					Notes:			
Date	Applicator/Supervisor	Weather Info			Fertilizer Analysis	Rate	Amount Fertilizer Used	Equipment Used
		Temp	Wind	Precip				
3/10/2025	SLC	60	Calm	0	14-0-3	4.6	400lbs	Stand On
6/28/2025	SLC	75	Calm	0	6/28/2025	3207	70Gals	Stand On
6/28/2025	SLC	75	Calm	0	0-0-7	4.5	350lbs	Stand On

Harkrader Outfields:

Fertilizer Application Records								
Location Information					Management Area Information			
Name					Mgmt Area ID:			
Address					Mgmt Area Size:			
					Plant Species:			
Phone #					Notes:			
Date	Applicator/Supervisor	Weather Info			Fertilizer Analysis	Rate	Amount Fertilizer Used	Equipment Used
		Temp	Wind	Precip				
10/23/2024	Brandon D	68	Calm	0	8-0-1	3.6	1000lbs	Tractor /Spreader
3/10/2025	SLC	60	Calm	0	14-0-3	3.6	950lbs	Stand On
3/25/2025	SLC	70	Calm	0	15-0-5	3.2	240 Gals	Stand On
6/28/2025	SLC	75	Calm	0	0-0-7	4.6	200 Gal	Stand On

Harkrader Infields:

Fertilizer Application Records								
Location Information					Management Area Information			
Name					Mgmt Area ID:			
Address					Mgmt Area Size:			

					Plant Species:			
Phone #					Notes:			
Date	Applicator/Supervisor	Weather Info			Fertilizer Analysis	Rate	Amount Fertilizer Used	Equipment Used
		Temp	Wind	Precip				
3/10/2025	SLC	60	Calm	0	14-0-3	4.6	100 lbs	HH