

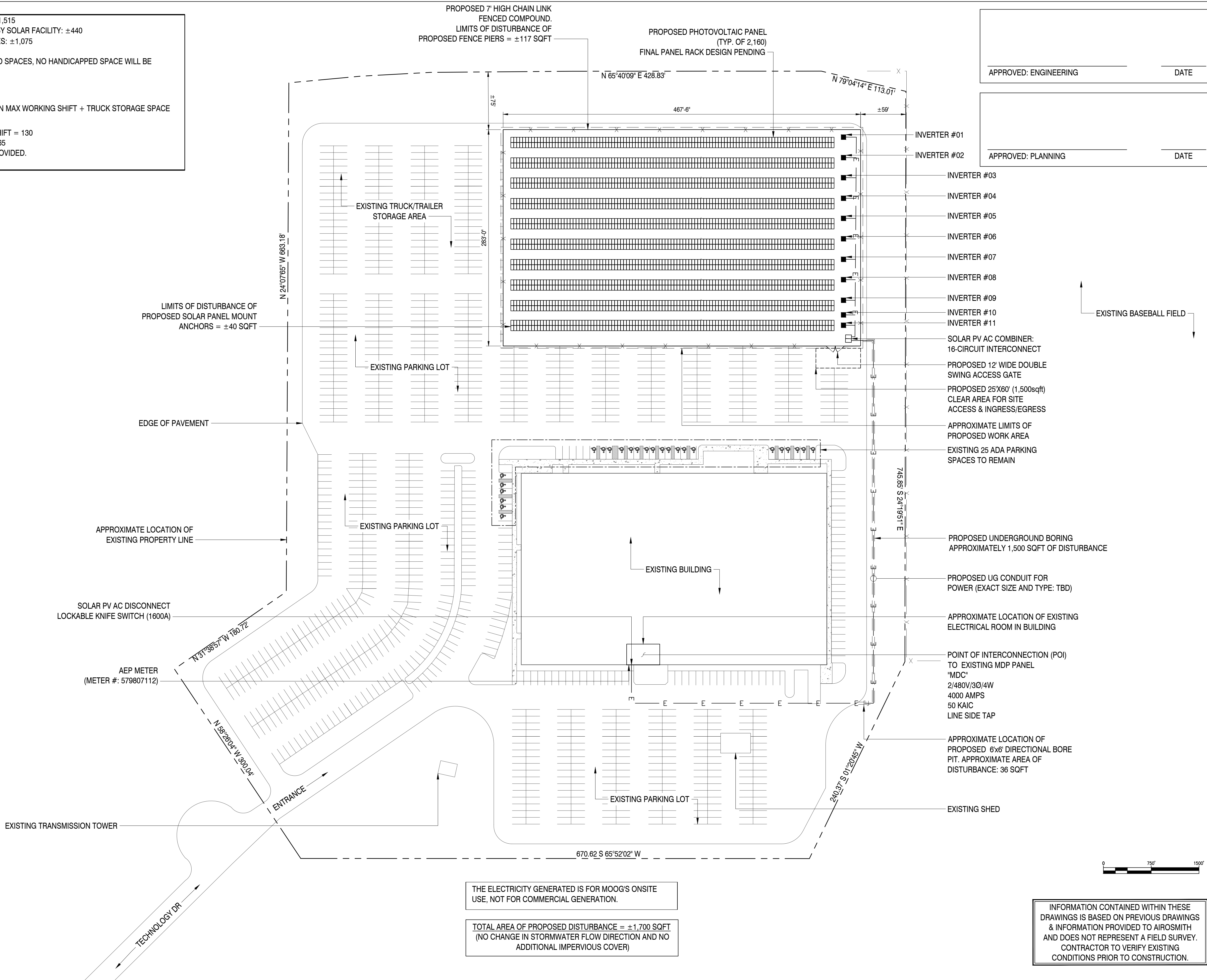
EXISTING PARKING SPACES\*: 1,515  
PARKING SPACES IMPACTED BY SOLAR FACILITY: ±440  
FINAL QTX OF PARKING SPACES: ±1,075

\* - INCLUDES 25 HANDICAPPED SPACES, NO HANDICAPPED SPACE WILL BE IMPACTED BY SOLAR FACILITY

**REQUIRED SPACES:**

1 SPACE PER 2 EMPLOYEES ON MAX WORKING SHIFT + TRUCK STORAGE SPACE REQUIRED FOR BUSINESS.

- EMPLOYEES ON LARGEST SHIFT = 130
  - REQ'D SPACES =  $130 \div 2 = 65$
- TRUCK STORAGE SPACE IS PROVIDED.



CARRIER: **centrica**  
Business Solutions

CONSULTANT TEAM: **AIROSMITH**  
AIROSMITH DEVELOPMENT  
AIROSMITH ENGINEERING  
318 WEST AVE.  
SARATOGA SPRINGS, NY 12866  
P-78730

THIS DOCUMENT IS PRELIMINARY  
IN NATURE AND IS NOT FINAL,  
UNTIL SIGNED AND SEALED.

THIS DOCUMENT AND THE IDEAS AND DESIGNS INCORPORATED  
HEREIN, AS AN INSTRUMENT OF PROFESSIONAL SERVICE, ARE  
THE PROPERTY OF AIROSMITH ENGINEERING AND ARE NOT TO  
BE USED, IN WHOLE OR IN PART, FOR OTHER PROJECTS  
WITHOUT THE WRITTEN AUTHORIZATION OF AIROSMITH  
ENGINEERING. IT IS UNLAWFUL FOR ANY PERSON TO AMEND  
ANY ASPECT OF THESE DRAWINGS WITHOUT THE WRITTEN  
APPROVAL OF THE PROFESSIONAL OF RECORD.

PROFESSIONAL STAMP:

DRAWINGS ISSUED FOR:				
REV.	DATE	DRAWN	DESCRIPTION	QA/QC
0	2025.07.01	HS	30% DRAWINGS	SC
1	2025.07.03	SKB	REVISED PER COMMENTS	SKB
2	2025.07.10	SKB	REVISED PER COMMENTS	SKB
3	10/01/25	SKB	REVISED PER COMMENTS	SC
4	10/07/25	SKB	REVISED PER COMMENTS	SKB

PROJECT INFORMATION:

SITE:  
MOOG CHRISTIANBURG  
406617

400 TECHNOLOGY DRIVE  
CHRISTIANBURG, VA 24073  
MONTGOMERY COUNTY

SHEET TITLE:  
SITE PLAN LAYOUT

SHEET NUMBER: **A01** REVISION: **4**