

TOWN OF CHRISTIANSBURG ZONING AS OF SEPTEMBER 23, 2025

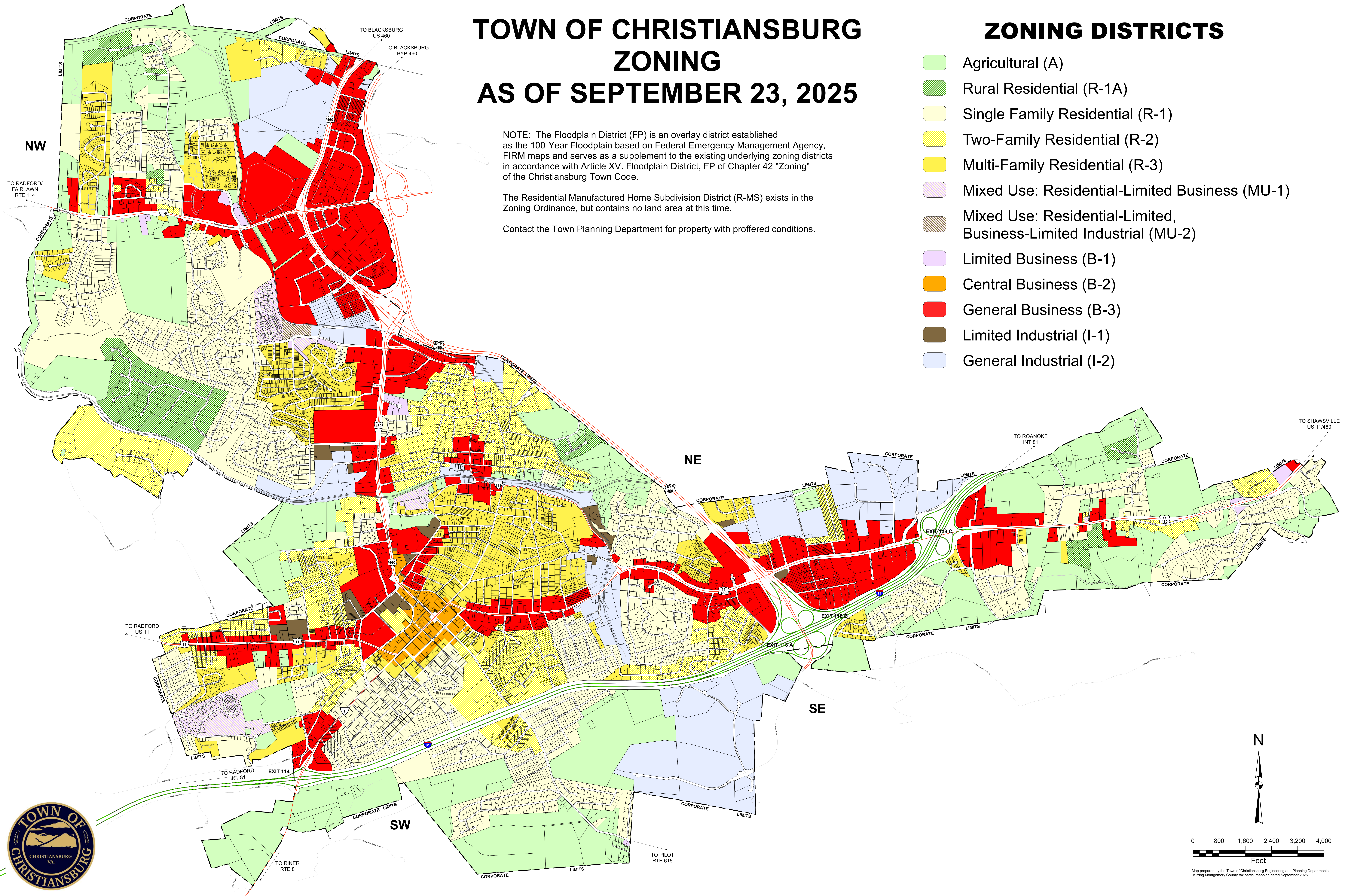
NOTE: The Floodplain District (FP) is an overlay district established as the 100-Year Floodplain based on Federal Emergency Management Agency, FIRM maps and serves as a supplement to the existing underlying zoning districts in accordance with Article XV. Floodplain District, FP of Chapter 42 "Zoning" of the Christiansburg Town Code.

The Residential Manufactured Home Subdivision District (R-MS) exists in the Zoning Ordinance, but contains no land area at this time.

Contact the Town Planning Department for property with proffered conditions.

ZONING DISTRICTS

- Agricultural (A)
- Rural Residential (R-1A)
- Single Family Residential (R-1)
- Two-Family Residential (R-2)
- Multi-Family Residential (R-3)
- Mixed Use: Residential-Limited Business (MU-1)
- Mixed Use: Residential-Limited, Business-Limited Industrial (MU-2)
- Limited Business (B-1)
- Central Business (B-2)
- General Business (B-3)
- Limited Industrial (I-1)
- General Industrial (I-2)



Map prepared by the Town of Christiansburg Engineering and Planning Departments, utilizing Montgomery County tax parcel mapping dated September 2025.