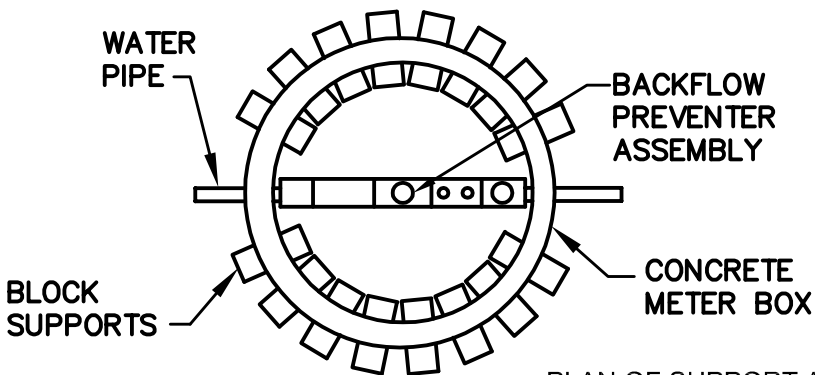
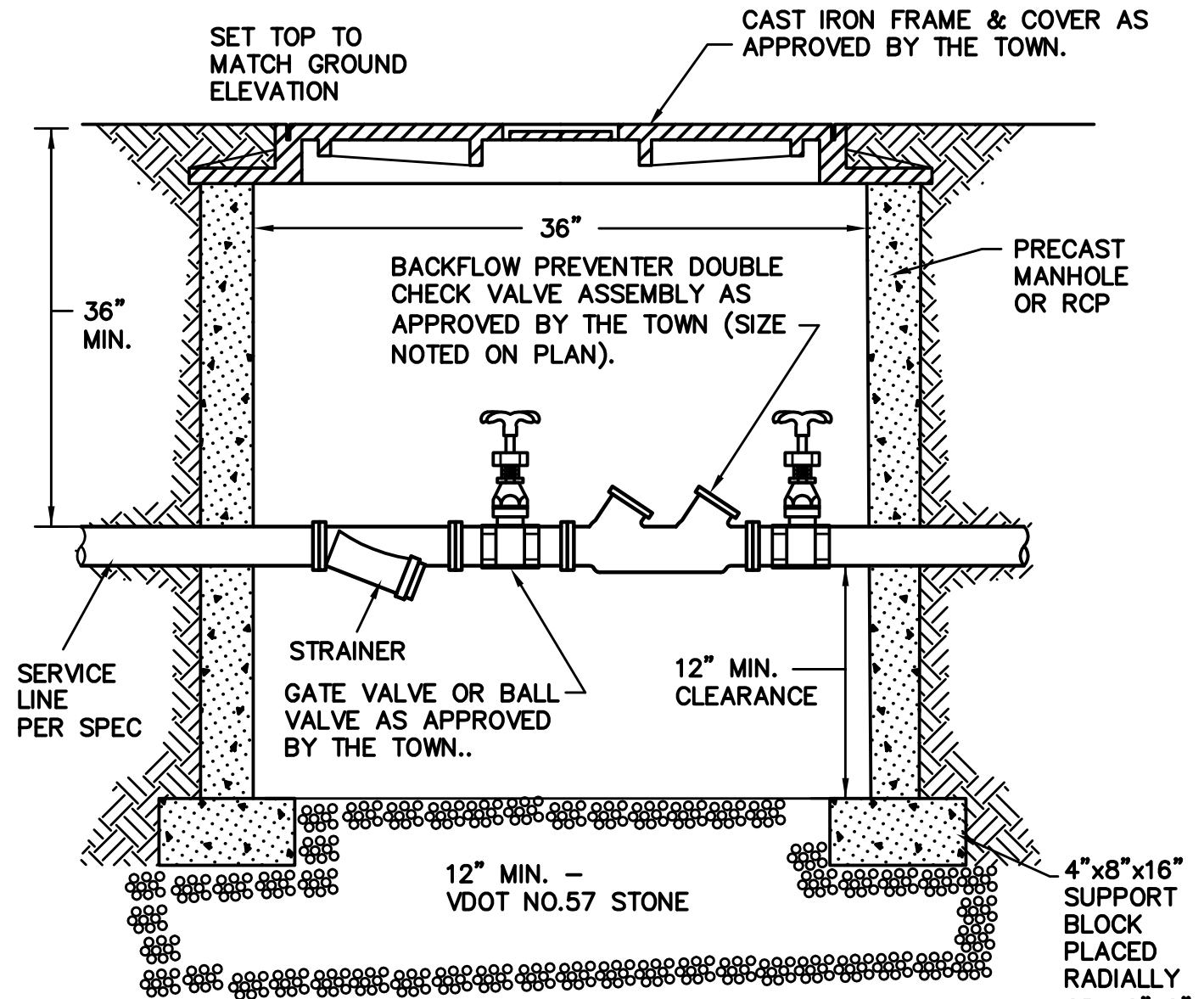


NOTE: BACKFLOW PREVENTER DOUBLE CHECK VALVE SHALL BE EQUIPPED WITH FOUR TEST PORTS.



PLAN OF SUPPORT ARRANGEMENT



ENGINEERING DEPARTMENT
 100 EAST MAIN STREET
 CHRISTIANSBURG, VA 24073
 (540) 382-6120 PHONE
 (540) 381-7238 FAX
engineering@christiansburg.org

BACKFLOW PREVENTER
 DOUBLE CHECK VALVE
 ASSEMBLY (3/4" TO 2")

DATE: 11 AUG 2014

SCALE: N.T.S.

DETAIL NO.

BP-1