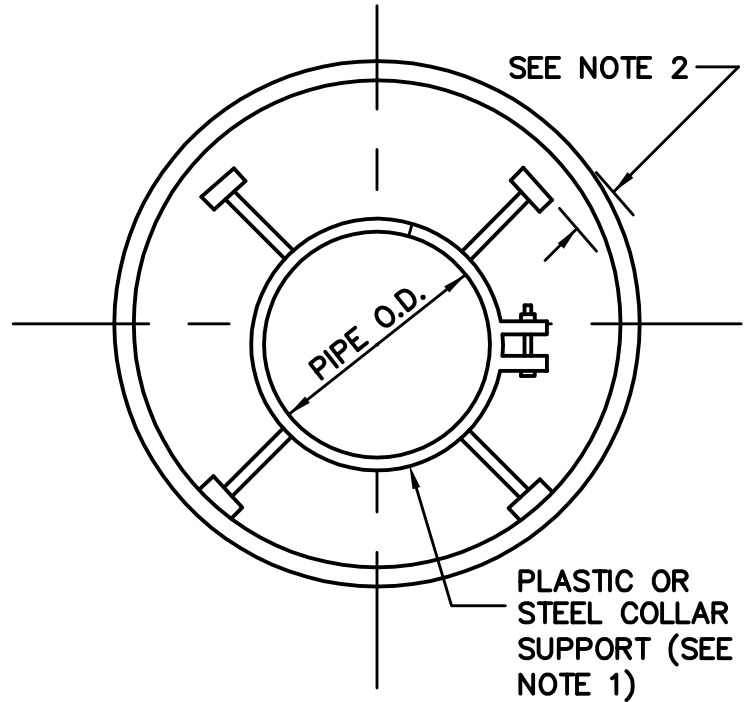
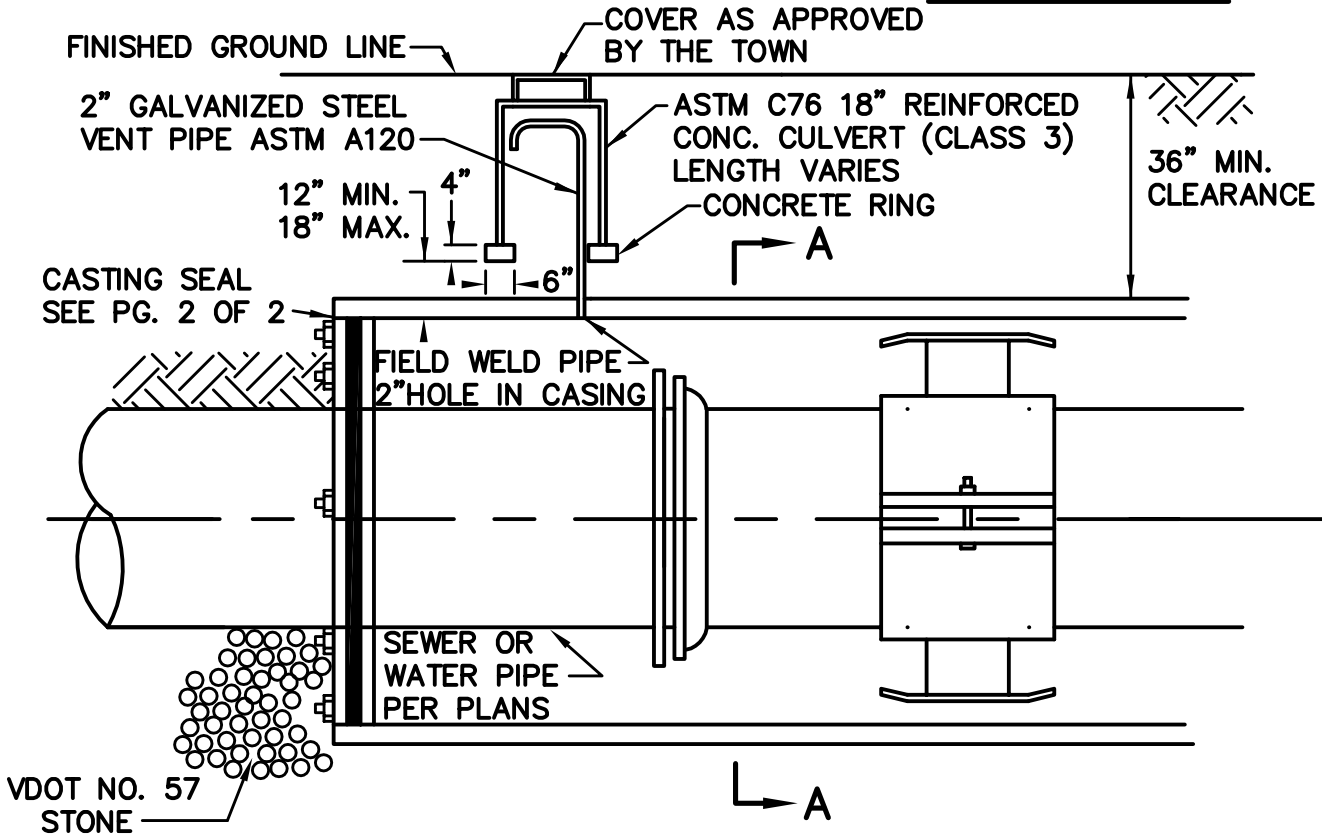


NOTES:

1. SINGLE-PIECE COLLAR SHOWN; 2-PIECE COLLAR USED FOR CARRIER PIPES 18" OR LARGER. DIMENSION AS NECESSARY TO PROVIDE
2. MINIMUM CLEARANCE NEEDED TO SLIDE PIPE THROUGH CASING. THIS STANDARD APPLICABLE FOR 4"
3. DIA. AND LARGER PIPE INSTALLED UNDER PRIMARY AND SECONDARY HIGHWAYS. FOR LINES SMALLER THAN 4", USE DUCTILE IRON PIPE FOR CASING IF OPEN TRENCH METHOD IS UTILIZED FOR INSTALLATION. MODIFY INSTALLATION ACCORDINGLY.
4. CORRUGATED METAL PIPE SHALL NOT BE USED AS CASING.
5. PVC PIPE REQUIRES SKID MIDWAY BETWEEN BELL AND SPIGOT END. TOP BLOCK NOT REQUIRED AT THIS LOCATION. PROVIDE SHIM TO PROTECT PIPE AGAINST STRAP.



FROST PROOF LID & SECTION A-A



* WITH PVC PIPE, DO NOT USE PETROLEUM PRODUCTS (OIL OR GREASE) OR CREOSOTE TREATED WOODS.



ENGINEERING
DEPARTMENT
100 EAST MAIN STREET
CHRISTIANSBURG, VA 24073
(540) 382-6120 PHONE
(540) 381-7238 FAX
engineering@christiansburg.org

NEOPRENE SEALED
CASING INSTALLATION
(1 OF 2)

DATE: 11 AUG 2014
SCALE: N.T.S.
DETAIL NO.
CS-3A