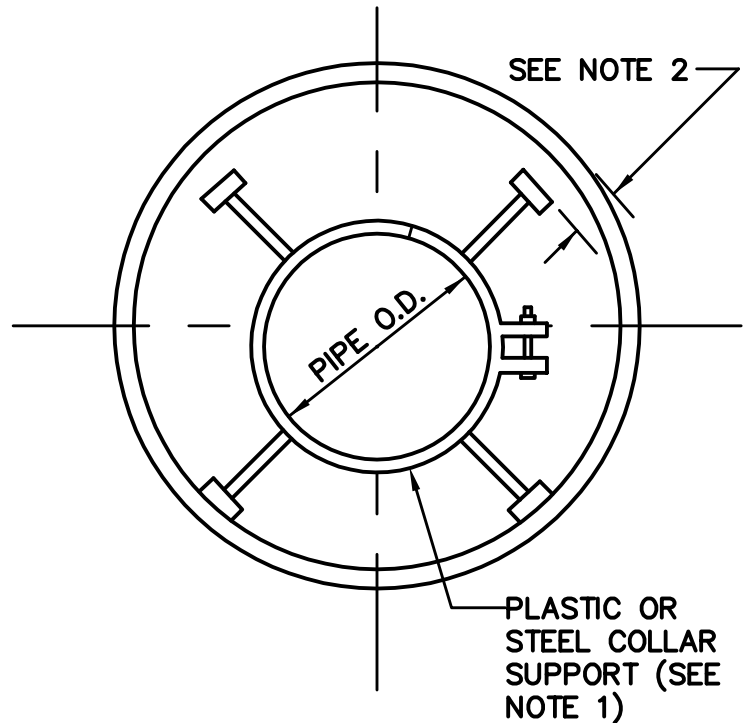
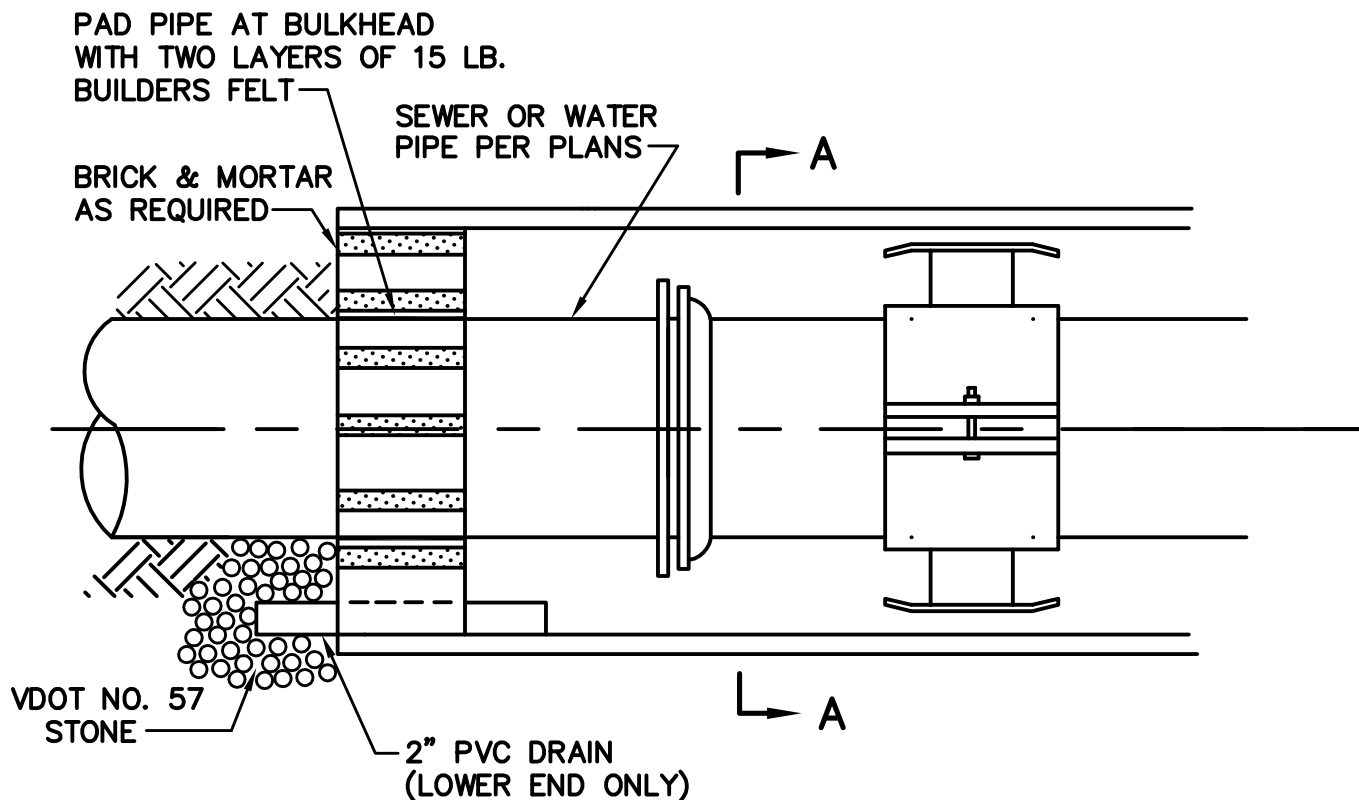


NOTES

1. SINGLE-PIECE COLLAR SHOWN;
2-PIECE COLLAR USED FOR CARRIER
PIPES 18" OR LARGER.
2. DIMENSION AS NECESSARY TO PROVIDE
MINIMUM CLEARANCE NEEDED TO SLIDE
PIPE THROUGH CASING.
3. THIS STANDARD APPLICABLE FOR 4"
DIA. AND LARGER PIPE INSTALLED
UNDER PRIMARY AND SECONDARY
HIGHWAYS. FOR LINES SMALLER THAN
4", USE DUCTILE IRON PIPE FOR
CASING IF OPEN TRENCH METHOD IS
UTILIZED FOR INSTALLATION. MODIFY
INSTALLATION ACCORDINGLY.
4. CORRUGATED METAL PIPE SHALL NOT
BE USED AS CASING.
5. PVC PIPE REQUIRES SKID MIDWAY
BETWEEN BELL AND SPIGOT END.
TOP BLOCK NOT REQUIRED AT THIS
LOCATION. PROVIDE SHIM TO PROTECT
PIPE AGAINST STRAP.



SECTION A-A



ENGINEERING
DEPARTMENT
100 EAST MAIN STREET
CHRISTIANSBURG, VA 24073
(540) 382-6120 PHONE
(540) 381-7238 FAX
engineering@christiansburg.org

SEALED CASING INSTALLATION WITH PLASTIC OR STEEL COLLAR

DATE: 11 AUG 2014

SCALE: N.T.S.

DETAIL NO.

CS-4