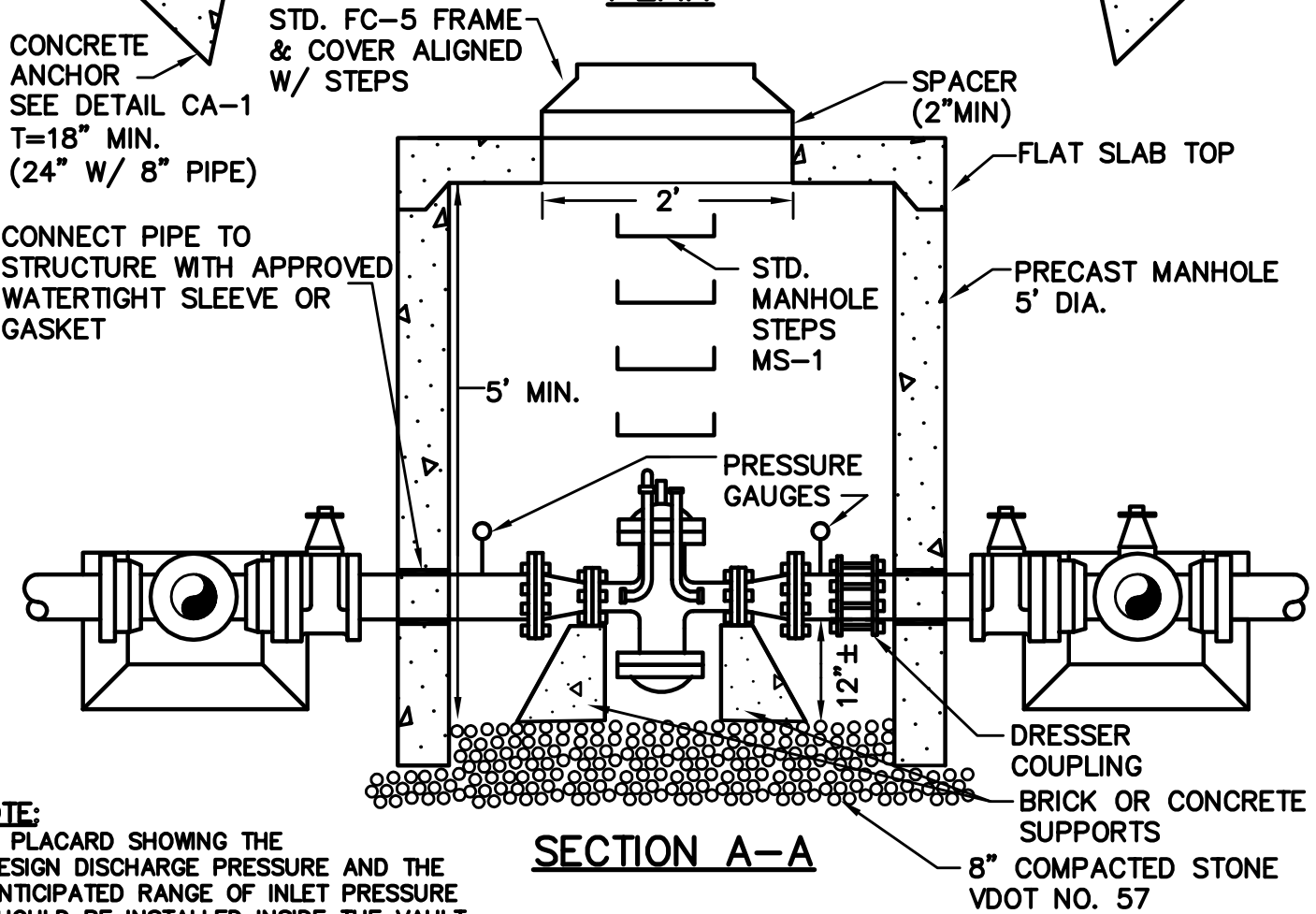
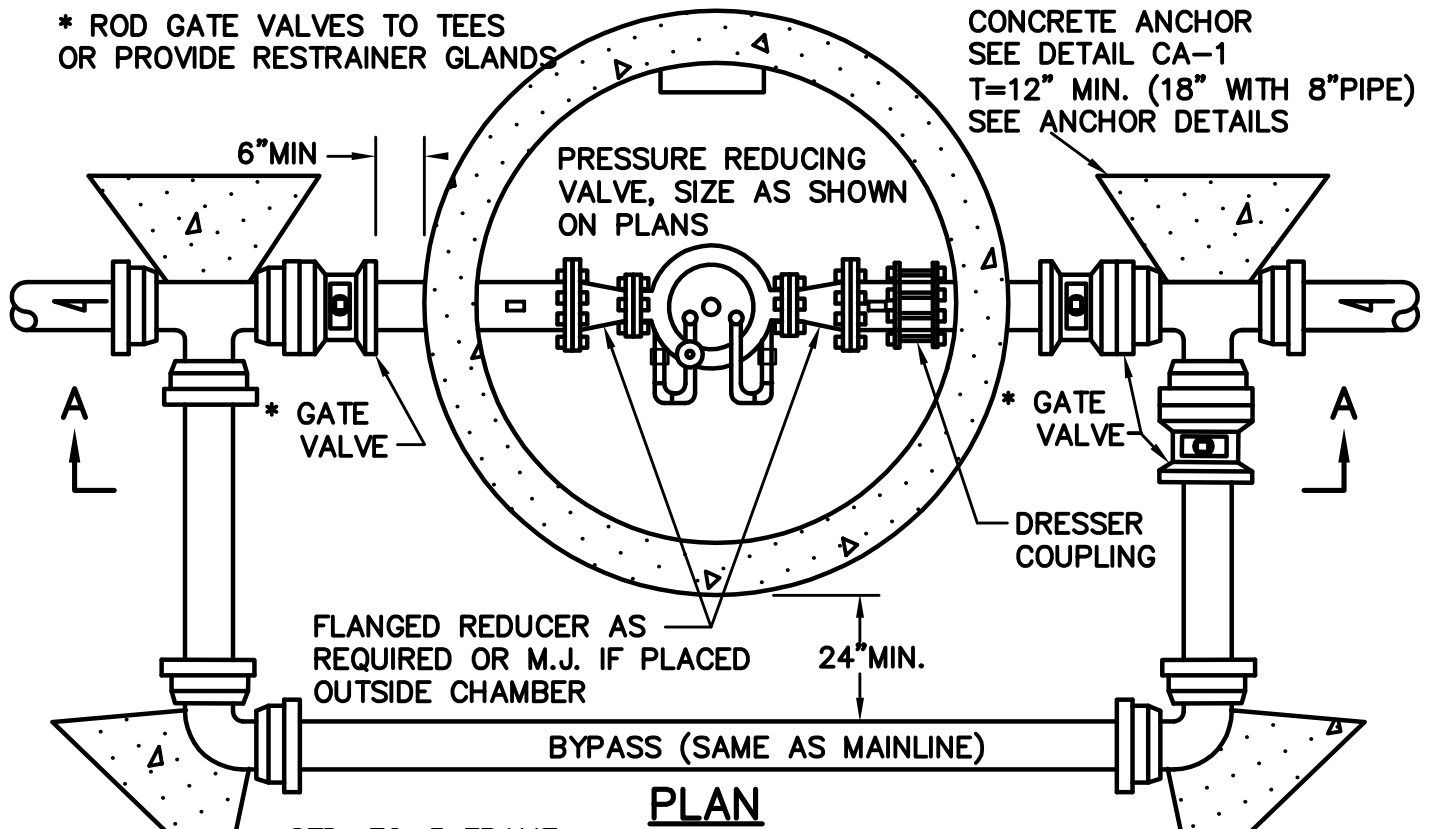


* ROD GATE VALVES TO TEES
OR PROVIDE RESTRAINER GLANDS

CONCRETE ANCHOR
SEE DETAIL CA-1
T=12" MIN. (18" WITH 8" PIPE)
SEE ANCHOR DETAILS



NOTE:
A PLACARD SHOWING THE
DESIGN DISCHARGE PRESSURE AND THE
ANTICIPATED RANGE OF INLET PRESSURE
SHOULD BE INSTALLED INSIDE THE VAULT.



ENGINEERING
DEPARTMENT
100 EAST MAIN STREET
CHRISTIANSBURG, VA 24073
(540) 382-6120 PHONE
(540) 381-7238 FAX
engineering@christiansburg.org

PRESSURE REDUCING
VALVE INSTALLATION

DATE: 11 AUG 2014
SCALE: N.T.S.
DETAIL NO.
RV-1